

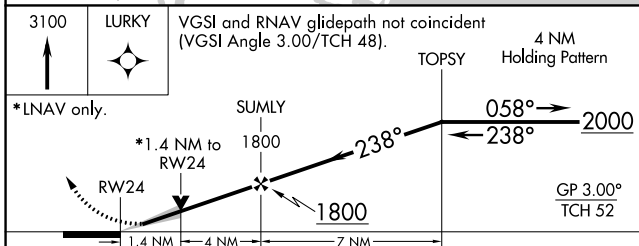
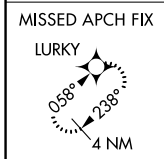
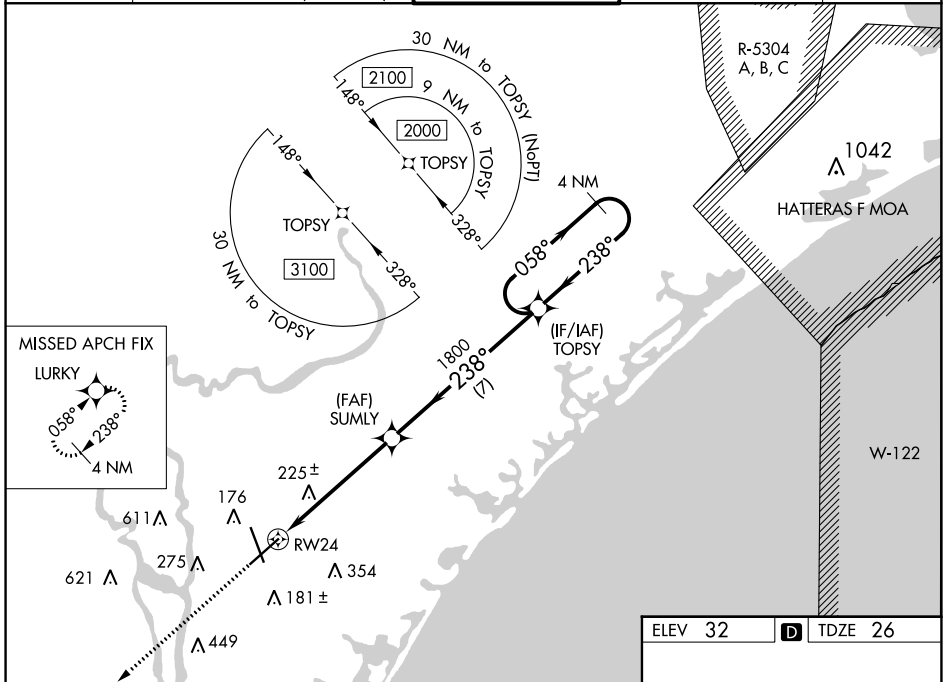
WAAS CH <b>45899</b> <b>W24A</b>	APP CRS <b>238°</b>	Rwy Idg TDZE Apt Elev	<b>8016</b> <b>26</b> <b>32</b>
--	------------------------	-----------------------------	---------------------------------------

# RNAV (GPS) RWY 24

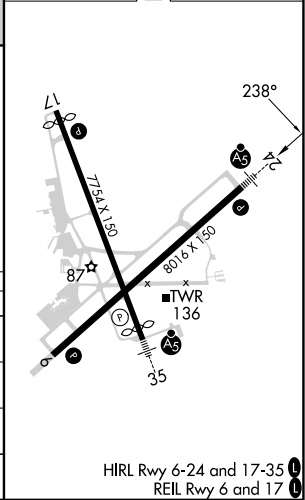
WILMINGTON INTL (ILM)

	For uncompensated Baro-VNAV systems, LNAV/VNAV NA below -7°C (20°F) or above 54°C (130°F). DME/DME RNP-0.3 NA. ** RVR 1800 authorized with use of FD or AP or HUD to DA.	MALSR 	MISSED APPROACH: Climb to 3100 direct LURKY and hold.
--	--	-----------	---

ATIS <b>124.975</b>	WILMINGTON APP CON * <b>118.25 284.65</b> (164°-343°) <b>135.75 317.425</b> (344°-163°)	WILMINGTON TOWER * <b>119.9</b> (CTAF) <b>239.3</b>	GND CON <b>121.9 348.6</b>	UNICOM <b>122.95</b>
------------------------	---	--	-------------------------------	-------------------------



ELEV 32	D	TDZE 26
---------	---	---------



CATEGORY	A	B	C	D
LPV DA **	226/24 200 (200-½)			
LNAV/VNAV DA	401/40 375 (400-¾)			
LNAV MDA	500/24 474 (500-½)		500/50 474 (500-1)	
CIRCLING	560-1 528 (600-1)		720-2 688 (700-2)	920-3 888 (900-3)

SE-2, 22 FEB 2024 to 21 MAR 2024

SE-2, 22 FEB 2024 to 21 MAR 2024