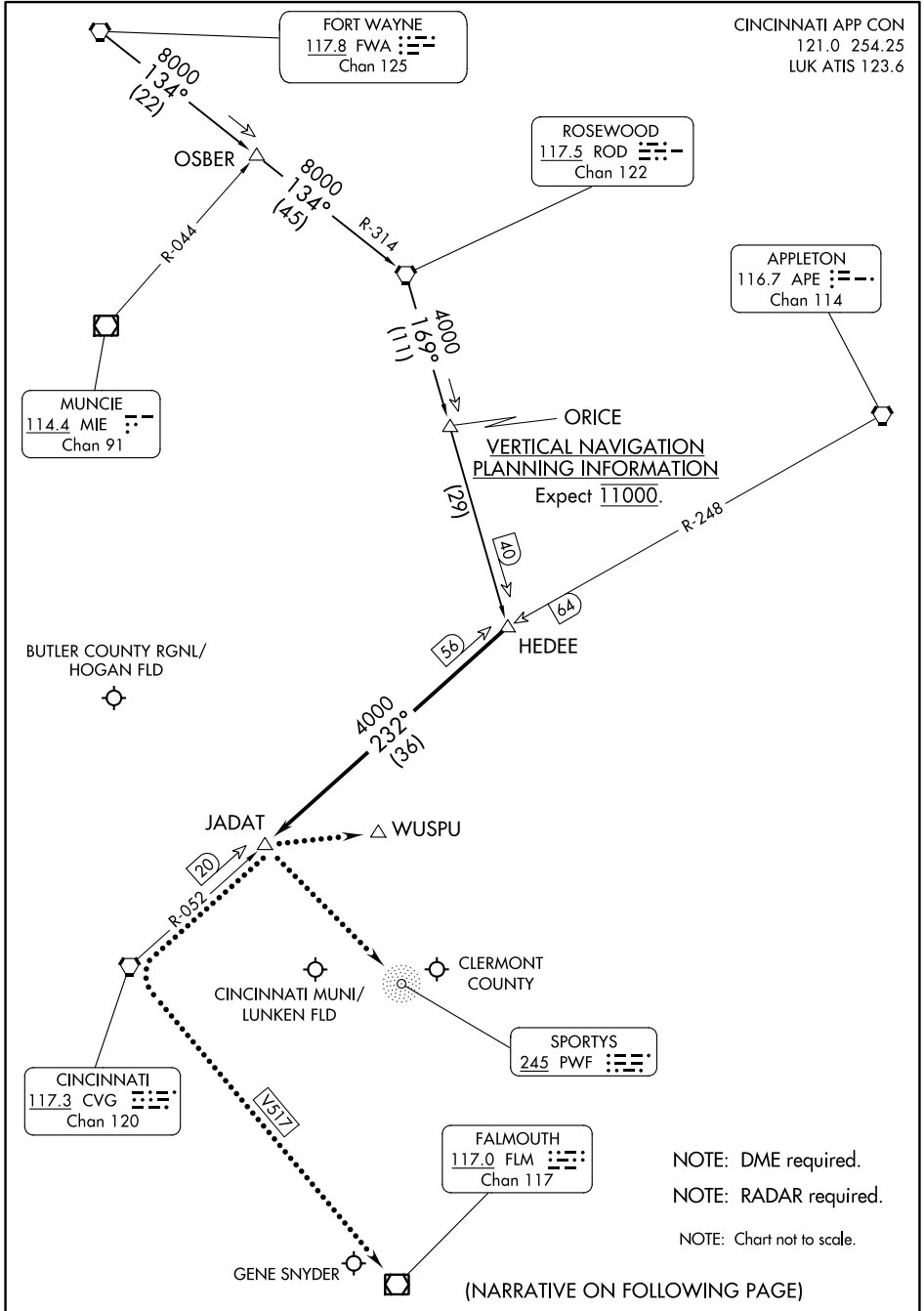


HEDEE FOUR ARRIVAL

CINCINNATI, OHIO

CINCINNATI APP CON
121.0 254.25
LUK ATIS 123.6



EC-2, 22 FEB 2024 to 21 MAR 2024

EC-2, 22 FEB 2024 to 21 MAR 2024

HEDEE FOUR ARRIVAL

CINCINNATI, OHIO

ARRIVAL ROUTE DESCRIPTION

FORT WAYNE TRANSITION (FWA.HEDEE4): From over FWA VORTAC via FWA R-134 to OSBER, then via FWA R-134 and ROD R-314 to ROD VORTAC, then via ROD R-169 to HEDEE. Thence. . . .

ROSEWOOD TRANSITION (ROD.HEDEE4): From over ROD VORTAC via ROD R-169 to HEDEE. Thence. . . .

. . . .From over HEDEE on CVG R-052 (MEA 4000) to JADAT, expect radar vectors to final approach course at JADAT.

LOST COMMUNICATION PROCEDURE

CINCINNATI MUNI/LUNKEN FLD - At JADAT, turn right to intercept CVG VORTAC R-059 to WUSPU and hold, maintain 4000.

CLERMONT COUNTY - At JADAT, proceed to SPORTYS (PWF) NDB, maintain 4000 until SPORTYS (PWF) NDB.

GENE SNYDER - At JADAT, proceed to CVG VORTAC then on V517 to FLM VOR/DME, maintain 4000 until FLM VOR/DME.

EC-2, 22 FEB 2024 to 21 MAR 2024

EC-2, 22 FEB 2024 to 21 MAR 2024

CINCE NINE ARRIVAL
(TIGRR, CINCE9) 05DEC19

(TIGRR, CINCE9) 24025
CINCE NINE ARRIVAL

AL-655 (FAA)

CINCINNATI, OHIO

CINCINNATI APP CON
123.875 254.25
CVG D-ATIS ARR
134.375
LUK ATIS
123.6

ROSEWOOD
117.5 ROD
Chan 122

APPLETON
116.7 APE
Chan 114



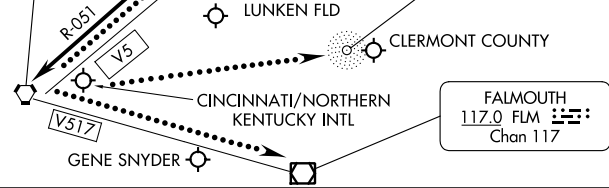
**CHARZ
VERTICAL PLANNING
INFORMATION**
All aircraft landing LUK expect
4000 or 6000.

BUTLER COUNTY
RGNL/HOGAN FLD

CINCINNATI
117.3 CVG
Chan 120

SPORTYS
245 PWF
Chan 117

FALMOUTH
117.0 FLM
Chan 117



NOTE: RADAR required.
NOTE: DME required.
NOTE: APE TRANSITION - Only for use
by overseas flights, or, aircraft from the
Cleveland/Akron-Canton/Pittsburgh
terminal areas with filed altitudes FL220.

NOTE: Chart not to scale.

APPLETON TRANSITION (APE.CINCE9): From over APE VORTAC on
APE R-248 to JARSO, then on CVG R-051 to TIGRR. Thence...

...from over TIGRR on CVG R-051 to CVG VORTAC.
Expect vectors to final approach course after TIGRR.

LOST COMMUNICATIONS:

- For LUK: At CVG VORTAC, proceed on V5 to WUSPU and hold, maintain 4000.
- For I69: At CVG VORTAC, proceed to SPORTYS (PWF) maintain 4000 until SPORTYS (PWF).
- For K62: At CVG VORTAC, proceed on V517 to FLM VOR/DME, maintain 3000 until FLM VOR/DME.

HARDU FIVE ARRIVAL

CINCINNATI APP CON
 119.7 363.15 (090°-269°)
 123.875 363.15 (270°-089°)
 CVG D-ATIS ARR
 134.375
 LUK ATIS
 123.6

BUTLER COUNTY
 RGNL/HOGAN FLD

WUSPU

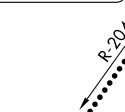
SPORTYS
 245 PWF

CINCINNATI/
 NORTHERN
 KENTUCKY INTL

CINCINNATI MUNI/
 LUNKEN FLD

CLERMONT COUNTY

CINCINNATI
 117.3 CVG
 Chan 120

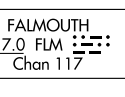


ZETLA

GENE SNYDER

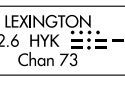
NOTE: RADAR required.
 NOTE: DME required.

FALMOUTH
 117.0 FLM
 Chan 117



JAKIE

LEXINGTON
 112.6 HYK
 Chan 73



HARDU

TAYOS



CHEDA

PACKO

ARTUR



VOLUNTEER
 116.4 VXV
 Chan 111

HOLSTON MOUNTAIN
 114.6 HMV
 Chan 93

NOTE: Chart not to scale.

(CONTINUED ON FOLLOWING PAGE)

HARDU FIVE ARRIVAL

SE-1, 22 FEB 2024 to 21 MAR 2024

SE-1, 22 FEB 2024 to 21 MAR 2024

HARDU FIVE ARRIVAL

ARRIVAL ROUTE DESCRIPTION

HOLSTON MOUNTAIN TRANSITION (HMV.HARDU5): From over HMV VORTAC on HMV R-311 to CHEDA, then on VXV R-011 to TAYOS, then on FLM R-154 to HARDU. Thence . . .

VOLUNTEER TRANSITION (VXV.HARDU5): From over VXV VORTAC on VXV R-011 to TAYOS, then on FLM R-154 to HARDU. Thence . . .

. . . from over HARDU on FLM VOR/DME R-154 to FLM VOR/DME, then FLM R-314 to ZETLA. Expect vectors to final approach course after JAKIE.

LOST COMMUNICATIONS

For LUK: At ZETLA, proceed to CVG VORTAC then on V5 to WUSPU and hold, maintain 4000.

For HAO: At ZETLA, proceed to CVG VORTAC. Maintain 3000 until CVG VORTAC.

For I69: At ZETLA, proceed to CVG VORTAC then to SPORTYS (PWF). Maintain 4000 until SPORTYS (PWF).

For K62: At ZETLA, proceed to CVG VORTAC then on V517 to FLM VOR/DME. Maintain 3000 until FLM VOR/DME.

SE-1, 22 FEB 2024 to 21 MAR 2024

SE-1, 22 FEB 2024 to 21 MAR 2024

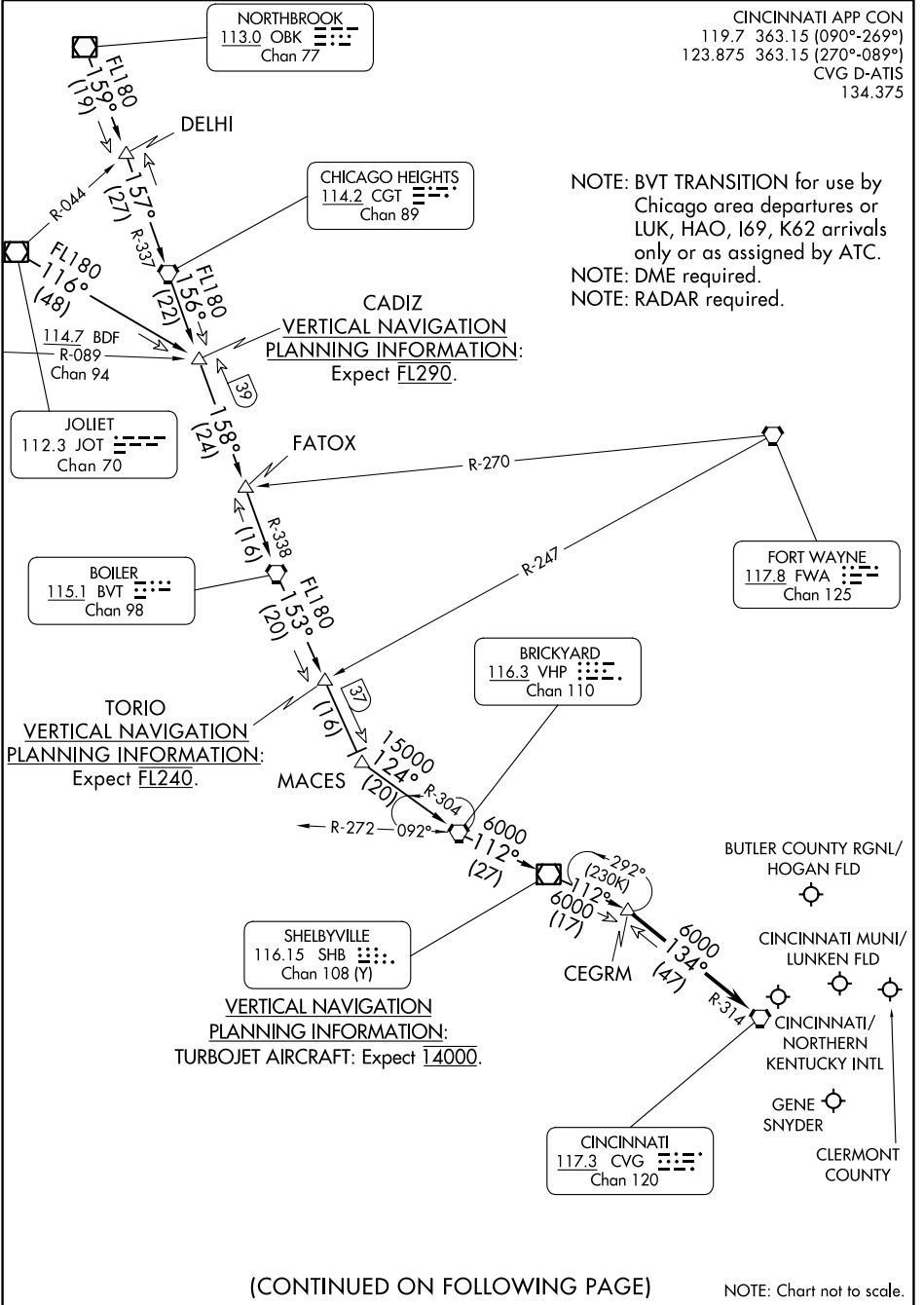
HARDU FIVE ARRIVAL

SHELBYVILLE SIX ARRIVAL

AL-655 (FAA)

COVINGTON, KENTUCKY

CINCINNATI APP CON
 119.7 363.15 (090°-269°)
 123.875 363.15 (270°-089°)
 CVG D-ATIS
 134.375



NOTE: BVT TRANSITION for use by Chicago area departures or LUK, HAO, I69, K62 arrivals only or as assigned by ATC.
 NOTE: DME required.
 NOTE: RADAR required.

SE-1, 22 FEB 2024 to 21 MAR 2024

SE-1, 22 FEB 2024 to 21 MAR 2024

(CONTINUED ON FOLLOWING PAGE)

NOTE: Chart not to scale.

SHELBYVILLE SIX ARRIVAL

COVINGTON, KENTUCKY

ARRIVAL ROUTE DESCRIPTION

BOILER TRANSITION (BVT.SHB6): From over BVT VORTAC on BVT R-153 to MACES, then on VHP R-304 to VHP VORTAC, then on VHP R-112 to SHB VOR/DME, then on SHB R-112 to CEGRM, thence....

JOLIET TRANSITION (JOT.SHB6): From over JOT VOR/DME on JOT R-116 to CADIZ, then on BVT R-338 to BVT VORTAC, then on BVT R-153 to MACES, then on VHP R-304 to VHP VORTAC, then on VHP R-112 to SHB VOR/DME, then on SHB R-112 to CEGRM, thence....

NORTHBROOK TRANSITION (OBK.SHB6): From over OBK VOR/DME on OBK R-159 to DELHI, then on CGT R-337 to CGT VORTAC, then on CGT R-156 to CADIZ, then on BVT R-338 to BVT VORTAC, then on BVT R-153 to MACES, then on VHP R-304 to VHP VORTAC, then on VHP R-112 to SHB VOR/DME, then on SHB R-112 to CEGRM, thence....

....from over CEGRM on CVG R-314 to CVG VORTAC. Expect RADAR vectors to final approach course after CEGRM.

SE-1, 22 FEB 2024 to 21 MAR 2024

SE-1, 22 FEB 2024 to 21 MAR 2024