

VOR/DME SHB 116.15 Chan 108 (Y)	APP CRS 142°	Rwy Idg TDZE Apt Elev	N/A N/A 912
-----------------------------------------------------	------------------------	-----------------------------	----------------------------------------

VOR-A
GREENSBURG MUNI (I34)

▼ Use Columbus Muni altimeter setting; if not received, use Indianapolis Intl altimeter setting and increase all MDAs 40 feet. Circling Rwy 18 NA at night. Rwy 18 helicopter visibility reduction below 1 SM NA.

▲ NA MISSED APPROACH: Climb to 2000 then climbing right turn to 2700 via SHB R-142 to APODD INT/SHB 18 DME/RADAR and hold.

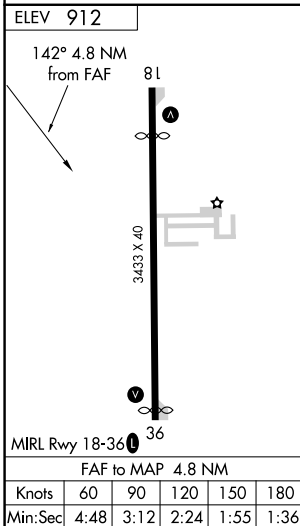
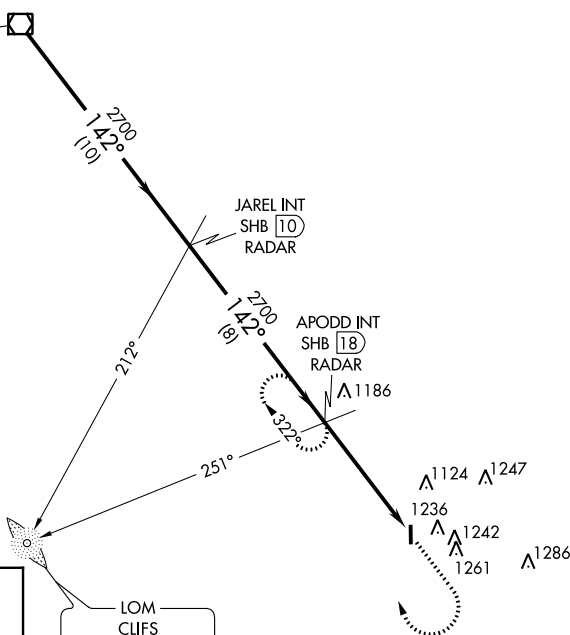
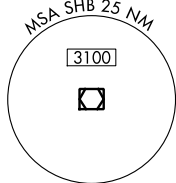
BAK AWOS-3 119.75	INDIANAPOLIS APP CON 127.15	CTAF 122.9 0
-----------------------------	---------------------------------------	------------------------

Λ 1542

ADF, DME or RADAR REQUIRED

IAF
SHELBYVILLE
116.15 SHB **108 (Y)**
Chan 108 (Y)

Procedure NA for arrival on SHB VOR/DME airway radials 124 CW 171.



	2000	2700	SHB R-142	APODD INT
	↑	↷		
SHB VOR/DME	JAREL INT SHB 10 RADAR	APODD INT SHB 18 RADAR	SHB 22.8	
2700	2700	2700		
	10 NM	8 NM	4.8 NM	
CATEGORY	A	B	C	D
☑ CIRCLING	1680-1 768 (800-1)	1680-1¼ 768 (800-1¼)	1680-2¼ 768 (800-2¼)	NA

EC-2, 22 FEB 2024 to 21 MAR 2024

EC-2, 22 FEB 2024 to 21 MAR 2024