

WAAS CH 40330 W28A	APP CRS 285°	Rwy Idg 5018 TDZE 50 Apr Elev 52
--	------------------------	---

RNAV (GPS) RWY 28L

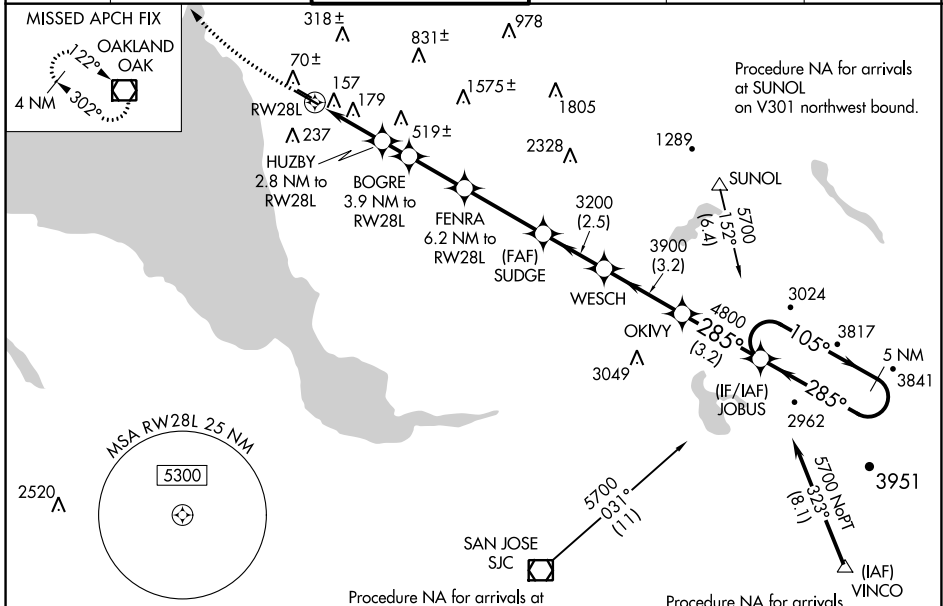
HAYWARD EXEC(HWD)

RNP APCH.

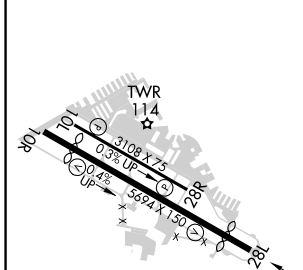
Baro-VNAV NA. When local altimeter setting not received, use Oakland altimeter setting: increase all DA/MDA 20 feet, and LNAV/VNAV all Cats and LNAV Cat C/D visibility 1/8 SM and Circling Cat D visibility 1/4 SM. Circling NA north of Rwy 10L-28R. Rwy 28L: Helicopter visibility reduction below 3/4 SM NA.

MISSED APPROACH: Climb to 600 then climbing right turn to 2100 direct OAK VOR/DME and hold.

ATIS 126.7	NORCAL APP CON 124.4 351.8	HAYWARD TOWER * 120.2 (CTAF) 0 257.8	GND CON 121.4	CLNC DEL 128.05	UNICOM 122.95
----------------------	--------------------------------------	--	-------------------------	---------------------------	-------------------------



ELEV 52	TDZE 50
---------	---------



600	2100	OAK	VGSI and RNAV glidepath not coincident (VGSI Angle 4.00/TCH 35).	OKIVY	JOBUS	5 NM
*LNAV only.		FENRA	SUDGE	WESCH	OKIVY	JOBUS
		6.2 NM to RW28L	3200			5 NM Holding Pattern
		BOGRE				
		3.9 NM to RW28L				
		HUZBY				
		2.8 NM to RW28L				
		RW28L				
		2.8	1.1 NM	2.3 NM	3.3 NM	2.5 NM
		1000*	1360*	2120*	3200	3900
						4800
						5700
						GP 3.10°
						TCH 35

CATEGORY	A	B	C	D
LPV DA		348-1	298 (300-1)	
LNAV/VNAV DA		400-1 1/8	350 (400-1 1/8)	
LNAV MDA	460-1	410 (500-1)	460-1 1/8	410 (500-1 1/8)
CIRCLING	540-1	488 (500-1)	540-1 1/2	920-2 3/4
			488 (500-1 1/2)	868 (900-2 3/4)

MIRL Rwy 10R-28L
MIRL Rwy 10L-28R
REIL Rwy 10R and 28L

SW-2, 22 FEB 2024 to 21 MAR 2024

SW-2, 22 FEB 2024 to 21 MAR 2024