

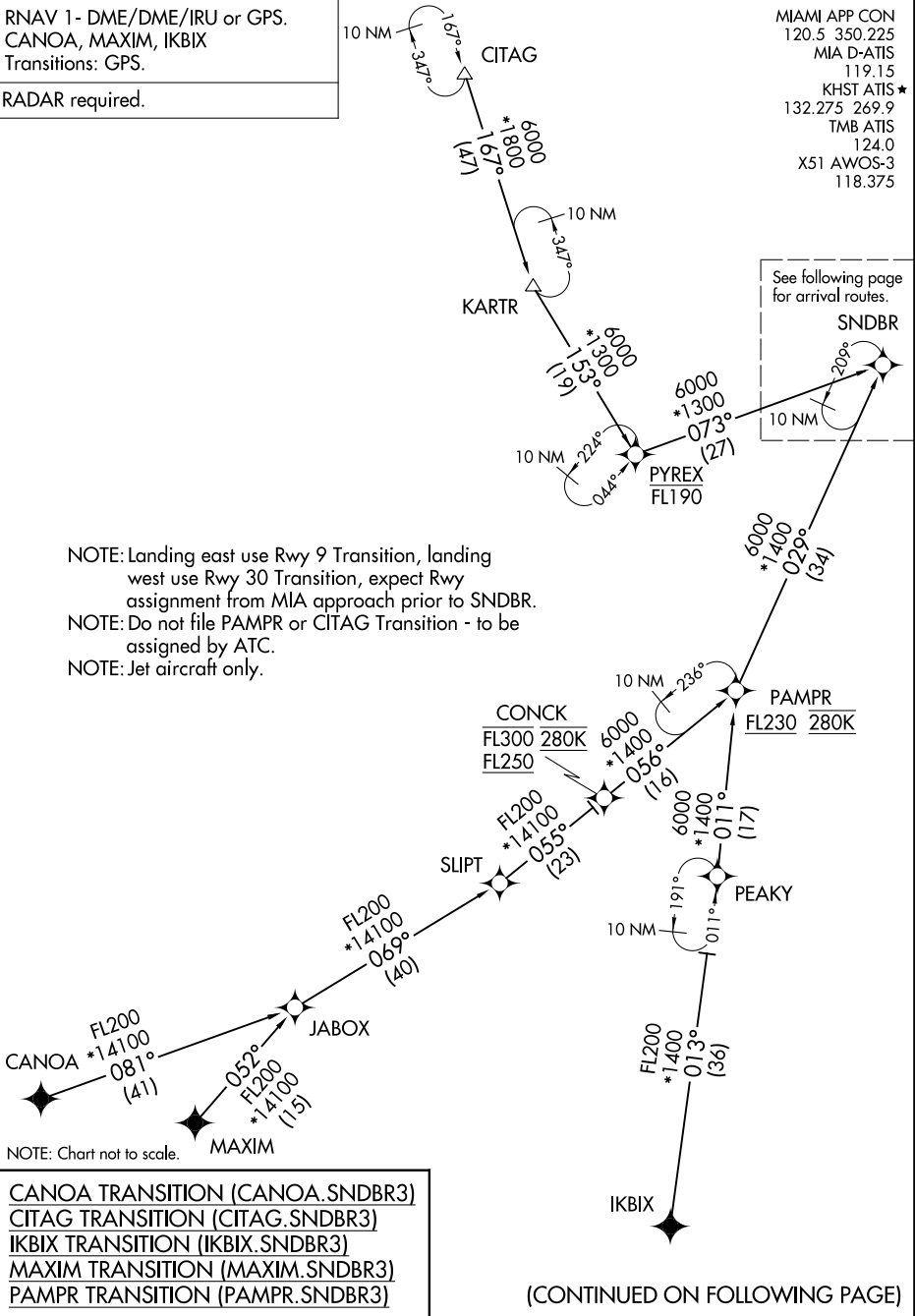
# SNDBR THREE ARRIVAL (RNAV) Transition Routes

MIAMI, FLORIDA

RNAV 1 - DME/DME/IRU or GPS.  
CANOA, MAXIM, IKBIX  
Transitions: GPS.

RADAR required.

MIAMI APP CON  
120.5 350.225  
MIA D-ATIS  
119.15  
KHST ATIS \*  
132.275 269.9  
TMB ATIS  
124.0  
X51 AWOS-3  
118.375



NOTE: Landing east use Rwy 9 Transition, landing west use Rwy 30 Transition, expect Rwy assignment from MIA approach prior to SNDBR.  
NOTE: Do not file PAMPR or CITAG Transition - to be assigned by ATC.  
NOTE: Jet aircraft only.

SE-3, 22 FEB 2024 to 21 MAR 2024

SE-3, 22 FEB 2024 to 21 MAR 2024

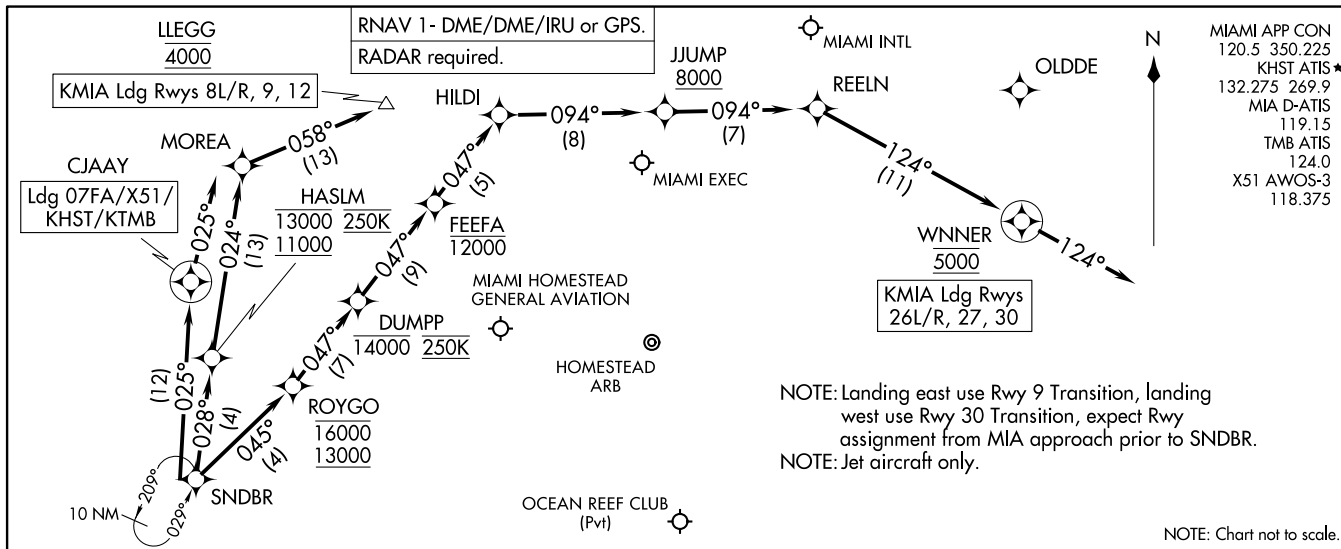
# SNDBR THREE ARRIVAL (RNAV) Transition Routes

MIAMI, FLORIDA

(SNDBR.SNDBR3) 29DEC22

SNDBR THREE ARRIVAL (RNAV) Arrival Routes

MIAMI, FLORIDA



(SNDBR.SNDBR3) 23222 Arrival Routes

(SNDBR.SNDBR3) 23222

AI-257 (FAA)

MIAMI, FLORIDA

**ARRIVAL ROUTE DESCRIPTION**

**LANDING KMIA RUNWAYS 8L/R, 9, 12:** From SNDBR on track 028° to cross HASLM between 11000 and 13000 and at 250K, then on track 024° to MOREA, then on track 058° to cross LLEGG at 4000. Expect ILS or RNAV Rwy 9 approach or RADAR vectors to final approach course.

**LANDING KMIA RUNWAYS 26L/R, 27, 30:** From SNDBR on track 045° to cross ROYGO between 13000 and 16000, then on track 047° to cross DUMPP at or below 14000 and at 250K, then on track 047° to cross FEFFA at or below 12000, then on track 047° to HILDI, then on track 094° to cross JJUMP at or above 8000, then on track 094° to REELN, then on track 124° to cross WNNER at 5000, then on track 124°. Expect RADAR vectors to final approach course.

**LANDING 07FA/X51/KHST/KTMB:** From SNDBR on track 025° to CJAAY, then on track 025°. Expect RADAR vectors to final approach course.