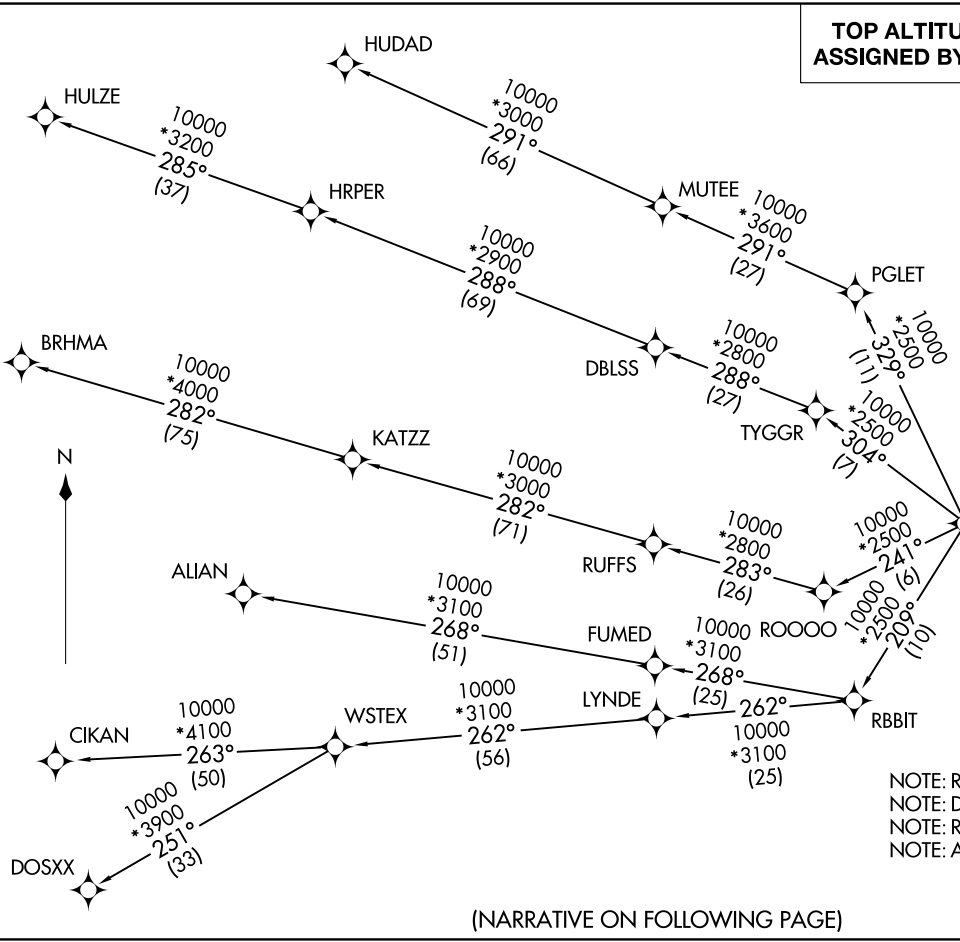


CTAF
 120.3
 REGIONAL DEP CON
 125.2 343.65

TAKEOFF MINIMUMS
 Rwys 18, 36: Standard.

**TOP ALTITUDE:
 ASSIGNED BY ATC**



NOTE: RNAV 1.
 NOTE: DME/DME/IRU or GPS required.
 NOTE: RADAR required.
 NOTE: ALIAN Transition: ATC assigned only.

(NARRATIVE ON FOLLOWING PAGE)

NOTE: Chart not to scale.

SWABR ONE DEPARTURE (RNAV)



DEPARTURE ROUTE DESCRIPTION

When entering controlled airspace, fly heading assigned by ATC, expect vectors to BOTCH, then on track 270° to SWABR, then on assigned transition. Maintain ATC assigned altitude, expect filed altitude 10 minutes after departure.

ALIAN TRANSITION (SWABR1 .ALIAN)

BRHMA TRANSITION (SWABR1 .BRHMA)

CIKAN TRANSITION (SWABR1 .CIKAN)

DOSXX TRANSITION (SWABR1 .DOSXX)

HUDAD TRANSITION (SWABR1 .HUDAD)

HULZE TRANSITION (SWABR1 .HULZE)

WSTEX TRANSITION (SWABR1 .WSTEX)

SC-2, 22 FEB 2024 to 21 MAR 2024

SC-2, 22 FEB 2024 to 21 MAR 2024