

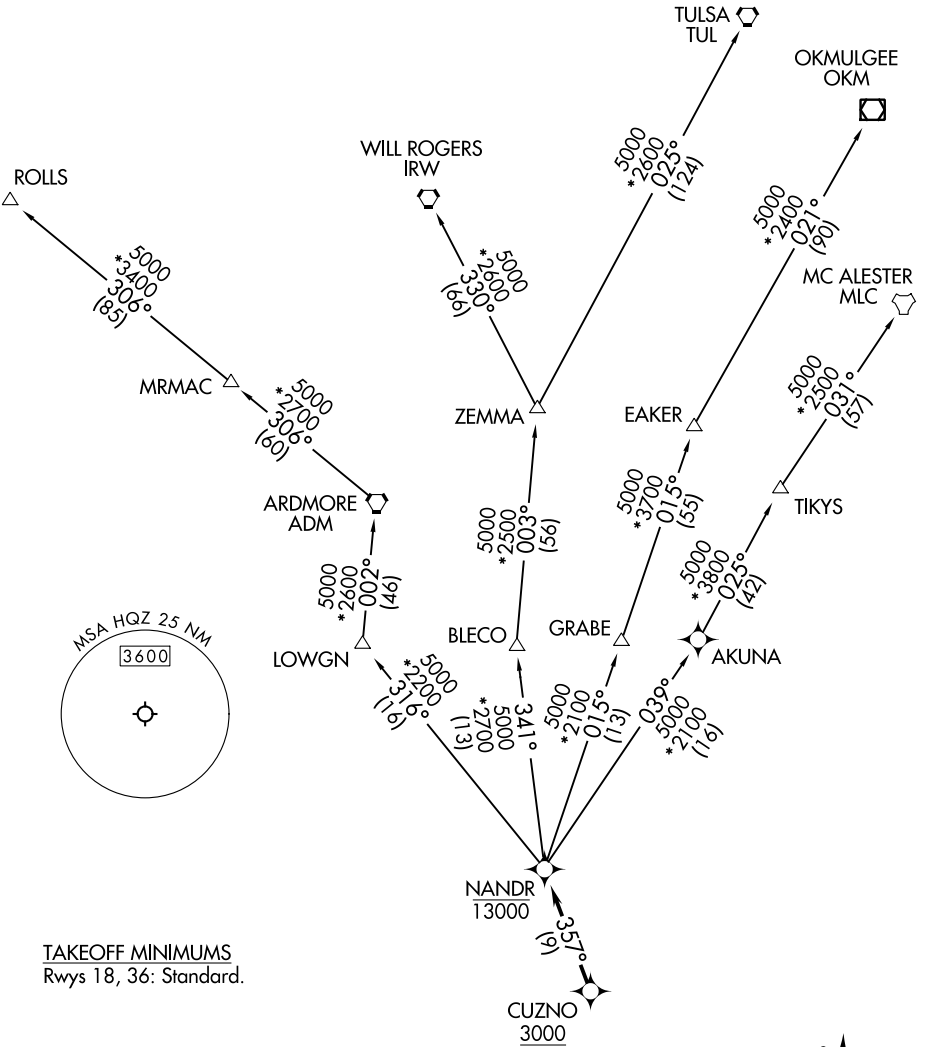
NANDR TWO DEPARTURE (RNAV)

REGIONAL DEP CON
125.2 343.65 (Rwy 18)
124.3 282.275 (Rwy 36)

RNAV 1 - DME/DME/IRU or GPS.

RADAR required.

**TOP ALTITUDE:
ASSIGNED BY ATC**



SC-2, 22 FEB 2024 to 21 MAR 2024

SC-2, 22 FEB 2024 to 21 MAR 2024

NANDR TWO DEPARTURE (RNAV)

NANDR TWO DEPARTURE (RNAV)



DEPARTURE ROUTE DESCRIPTION

TAKEOFF RUNWAY 18: Climb on heading 178° or as assigned by ATC, thence...

TAKEOFF RUNWAY 36: Climb on heading 358° or as assigned by ATC, thence...

. . . . expect RADAR vectors to cross CUZNO at or above 3000, then on track 357° to cross NANDR at or below 13000, then on assigned transition.

EAKER TRANSITION (NANDR2.EAKER)

MC ALESTER TRANSITION (NANDR2.MLC)

OKMULGEE TRANSITION (NANDR2.OKM)

ROLLS TRANSITION (NANDR2.ROLLS)

TULSA TRANSITION (NANDR2.TUL)

WILL ROGERS TRANSITION (NANDR2.IRW)

ZEMMA TRANSITION (NANDR2.ZEMMA)

SC-2, 22 FEB 2024 to 21 MAR 2024

SC-2, 22 FEB 2024 to 21 MAR 2024