

VORTAC FAM <b>115.7</b> Chan <b>104</b>	APP CRS <b>212°</b>	Rwy ldg TDZE Apt Elev	<b>4000</b> <b>880</b> <b>880</b>
---	------------------------	-----------------------------	---

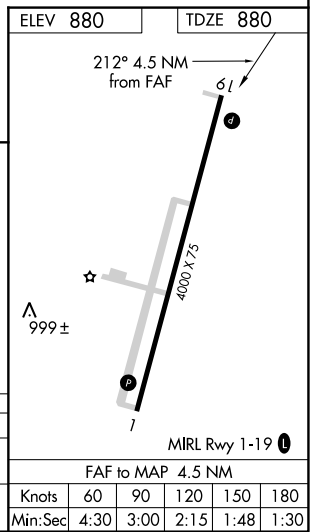
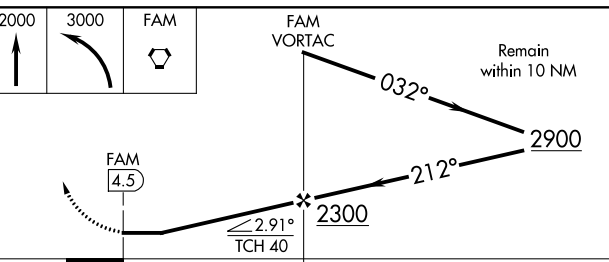
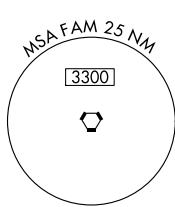
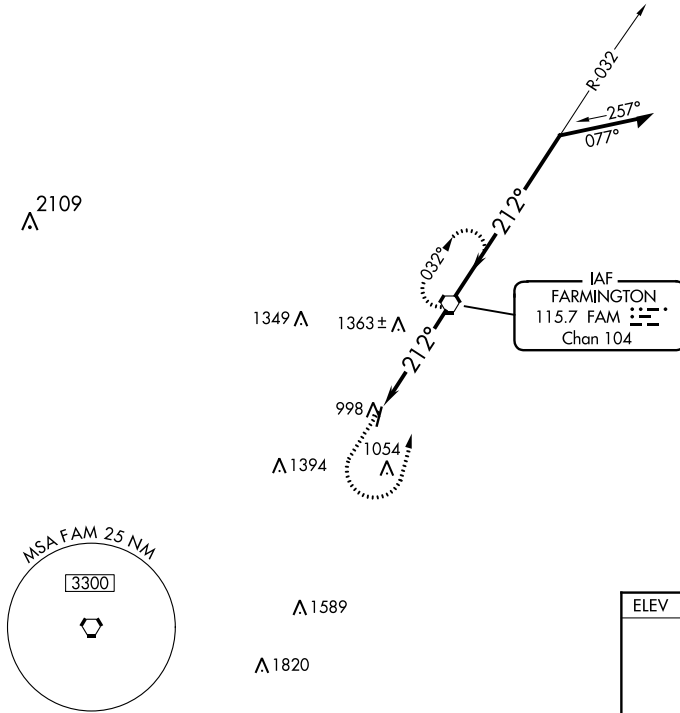
# VOR RWY 19

A PAUL VANCE FREDERICKTOWN RGNL (H88)

**V** Use Farmington Rgnl altimeter setting.  
**Δ NA** Rwy 19 helicopter visibility reduction below ¾ SM NA.  
 MISSED APPROACH: Climb to 2000 then climbing left turn to 3000 direct FAM VORTAC and hold.

KANSAS CITY CENTER  
**127.475 346.275**

UNICOM  
**122.8 (CTAF)**



CATEGORY	A	B	C	D
S-19	1660-1 780 (800-1)	1660-1¼ 780 (800-1¼)		NA
<b>C</b> CIRCLING	1660-1 780 (800-1)	1660-1¼ 780 (800-1¼)		NA

ELEV 880	TDZE 880
212° 4.5 NM from FAF	
61°	
4000 X 75	
MRL Rwy 1-19	
FAF to MAP 4.5 NM	
Knots	60 90 120 150 180
Min:Sec	4:30 3:00 2:15 1:48 1:30

NC-3, 22 FEB 2024 to 21 MAR 2024

NC-3, 22 FEB 2024 to 21 MAR 2024