

WAAS CH 93938 W18A	APP CRS 178°	Rwy Idg TDZE 622 Apt Elev 622
--	------------------------	---

RNAV (GPS) RWY 18

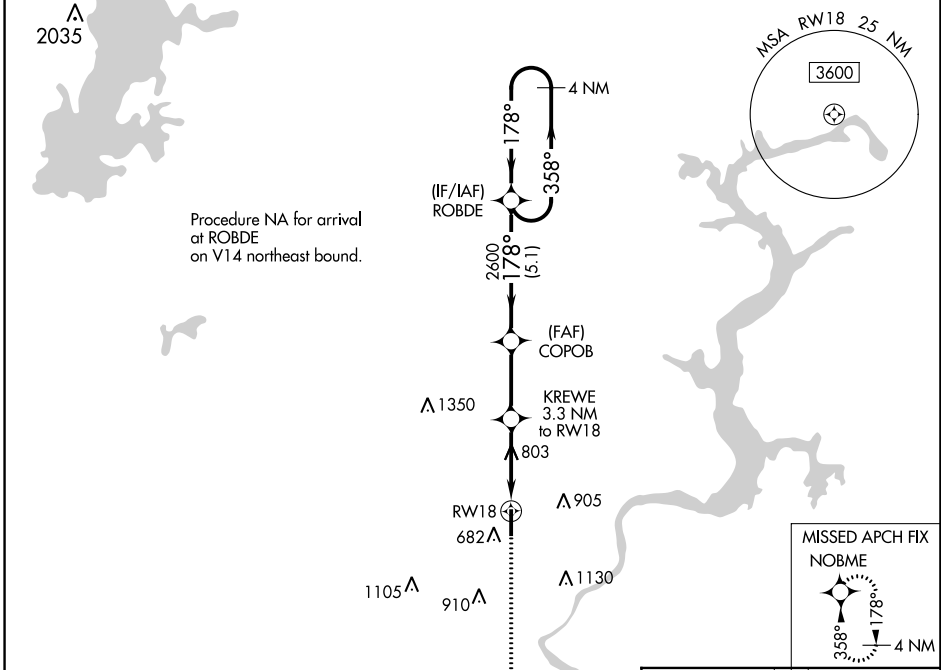
MID-AMERICA INDUSTRIAL (H71)

RNP APCH - GPS.

NA Circling Rwy 36 NA at night. For uncompensated Baro-VNAV systems, LNAV/VNAV NA below -1.6°C or above 54°C.

MISSED APPROACH: Climb to 2600 direct NOBME and hold.

AWOS 3-PT 120.1	TUL ASOS 124.9 377.2	TULSA APP CON 119.1 360.825	UNICOM 122.8 (CTAF)
---------------------------	--------------------------------	---------------------------------------	-------------------------------



SC-1, 22 FEB 2024 to 21 MAR 2024

SC-1, 22 FEB 2024 to 21 MAR 2024

ELEV 622		TDZE 622	
4 NM Holding Pattern		2600 NOBME	
ROBDE		COPOB	
2600 ← 358°		2600	
← 178°		← 178°	
GP 3.00°		*1700	
TCH 40		KREWE 3.3 NM to RW18	
← 5.1 NM		← 2.8 NM	
← 1.8 NM		← 1.5 NM	
RW18		RW18	
1.5 NM to RW18		1.5 NM to RW18	
*LNAV only.		*LNAV only.	
MIRL Rwy 18-36		REIL Rwy 18 and 36	