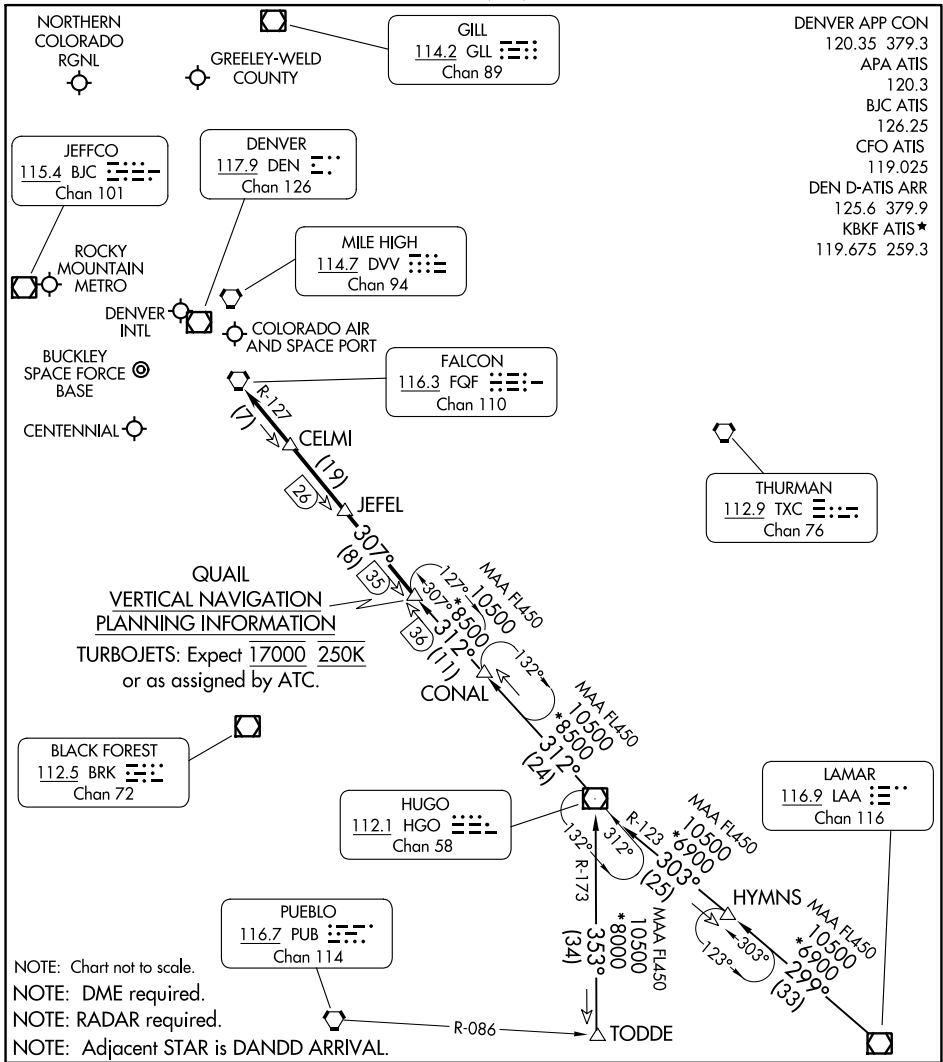


(QUAIL.QUAIL1) 23334

QUAIL ONE ARRIVAL

AL-9077 (FAA)

DENVER, COLORADO



DENVER APP CON
 120.35 379.3
 APA ATIS
 120.3
 BJC ATIS
 126.25
 CFO ATIS
 119.025
 DEN D-ATIS ARR
 125.6 379.9
 KBKF ATIS*
 119.675 259.3

**QUAIL
 VERTICAL NAVIGATION
 PLANNING INFORMATION**

TURBOJET: Expect 17000 250K
 or as assigned by ATC.

BLACK FOREST
 112.5 BRK
 Chan 72

HUGO
 112.1 HGO
 Chan 58

PUEBLO
 116.7 PUB
 Chan 114

THURMAN
 112.9 TXC
 Chan 76

LAMAR
 116.9 LAA
 Chan 116

- NOTE: Chart not to scale.
- NOTE: DME required.
- NOTE: RADAR required.
- NOTE: Adjacent STAR is DANDD ARRIVAL.

ARRIVAL ROUTE DESCRIPTION

HUGO TRANSITION (HGO.QUAIL1): From over HGO VOR/DME on HGO R-312 to QUAIL. Thence. . .

LAMAR TRANSITION (LAA.QUAIL1): From over LAA VOR/DME on LAA R-299 and HGO R-123 to HGO VOR/DME, then on HGO R-312 to QUAIL. Thence. . .

TODDE TRANSITION (TODDE.QUAIL1): From over TODDE on HGO R-173 to HGO VOR/DME, then on HGO R-312 to QUAIL. Thence. . .

. . . from over QUAIL on HGO R-312 and FQF R-127 to FQF VORTAC. Expect RADAR vectors to the final approach course at or before FQF VORTAC.

QUAIL ONE ARRIVAL

DENVER, COLORADO

(QUAIL.QUAIL1) 30JAN20

SW-1, 22 FEB 2024 to 21 MAR 2024

SW-1, 22 FEB 2024 to 21 MAR 2024