

| | | |
|--|------------------------|---|
| WAAS CH 61035 W32A | APP CRS 323° | Rwy Idg 6380 TDZE 902 Apt Elev 926 |
|--|------------------------|---|

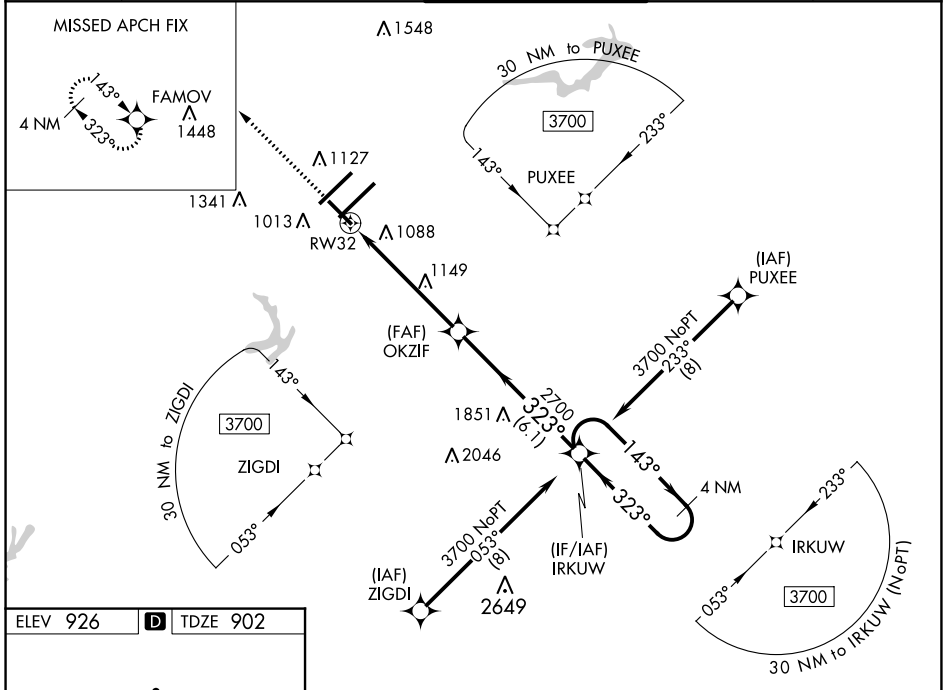
RNAV (GPS) RWY 32

PIEDMONT TRIAD INTL (GSO)

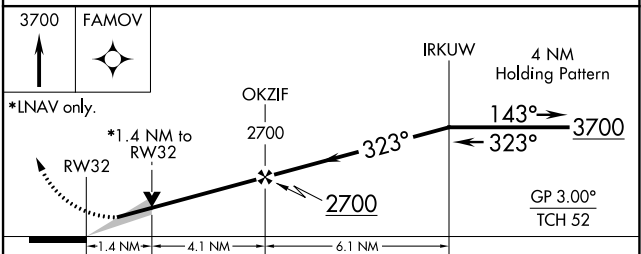
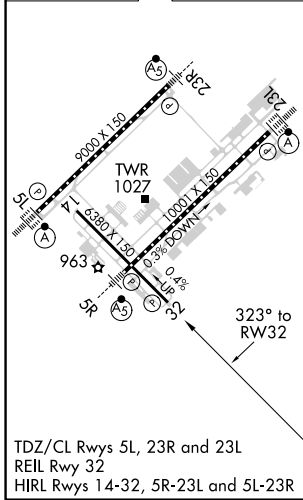
⚠ For uncompensated Baro-VNAV systems, LNAV/VNAV NA below -10°C (14°F) or above 54°C (130°F). DME/DME RNP-0.3 NA. Baro-VNAV and VDP NA when using Smith Reynolds altimeter setting. When local altimeter setting is not received use Smith Reynolds altimeter setting: increase all DA 38 feet and all MDA 40 feet, increase LNAV/VNAV all Cats and LNAV Cats C/D visibilities 1/8 mile, increase Circling Cats C/D visibility 1/4 mile.

MISSED APPROACH:
Climb to 3700 direct
FAMOV and hold.

| | | | | |
|-------------------------|---|--|-------------------------------|---------------------------|
| D-ATIS 128.55 | GREENSBORO APP CON 124.35 269.225 126.6 327.075 (250°-049°) (050°-249°) | GREENSBORO TOWER 119.1 290.325 | GND CON 121.9 348.6 | CLNC DEL 121.75 |
|-------------------------|---|--|-------------------------------|---------------------------|



| | | |
|----------|----------|----------|
| ELEV 926 | D | TDZE 902 |
|----------|----------|----------|



| CATEGORY | A | B | C | D |
|-------------------|--------|-------------|-----------------------------|-----------------------------|
| LPV DA | | 1102-3/4 | 200 (200-3/4) | |
| LNAV/VNAV DA | | 1419-13/4 | 517 (500-13/4) | |
| LNAV MDA | 1400-1 | 498 (500-1) | 1400-13/8 | 498 (500-13/8) |
| C CIRCLING | 1440-1 | 514 (600-1) | 1700-21/4 774 (800-21/4) | 1700-21/2 774 (800-21/2) |

SE-2, 22 FEB 2024 to 21 MAR 2024

SE-2, 22 FEB 2024 to 21 MAR 2024