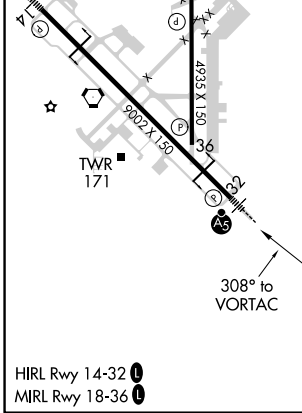
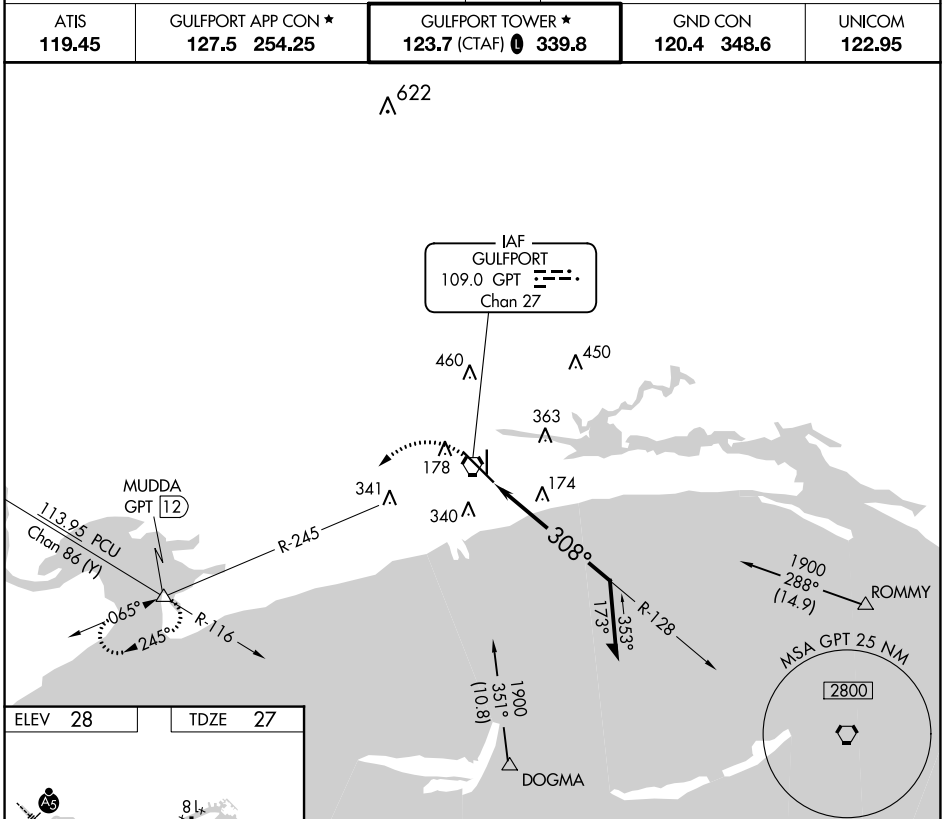


VORTAC GPT 109.0 Chan 27	APP CRS 308°	Rwy Idg 9002 TDZE 27 Apt Elev 28
--	------------------------	---

VOR Y RWY 32

GULFPORT-BILOXI INTL (GPT)

<p>Rwy 32 helicopter visibility reduction below RVR 4000 NA. For inop ALS, increase S-32 Cat A/B visibility to RVR 5500.</p>	<p>MALS R</p>	<p>MISSED APPROACH: Climbing left turn to 2000 on GPT VORTAC R-245 to MUDDA INT/12 DME and hold.</p>



2000	GPT R-245	MUDDA	<p>VGSI and descent angles not coincident (VGSI Angle 3.00/TCH 72).</p> <p>GPT VORTAC</p> <p>Remain within 10 NM</p>

CATEGORY	A	B	C	D
S-32	480/40	453 (500-¾)	480/45	453 (500-¾)
C CIRCLING	520-1 492 (500-1)	640-1 612 (700-1)	760-2 732 (800-2)	760-2¼ 732 (800-2¼)

SC-4, 22 FEB 2024 to 21 MAR 2024

SC-4, 22 FEB 2024 to 21 MAR 2024