

GREENCASTLE, INDIANA

AL-6336 (FAA)

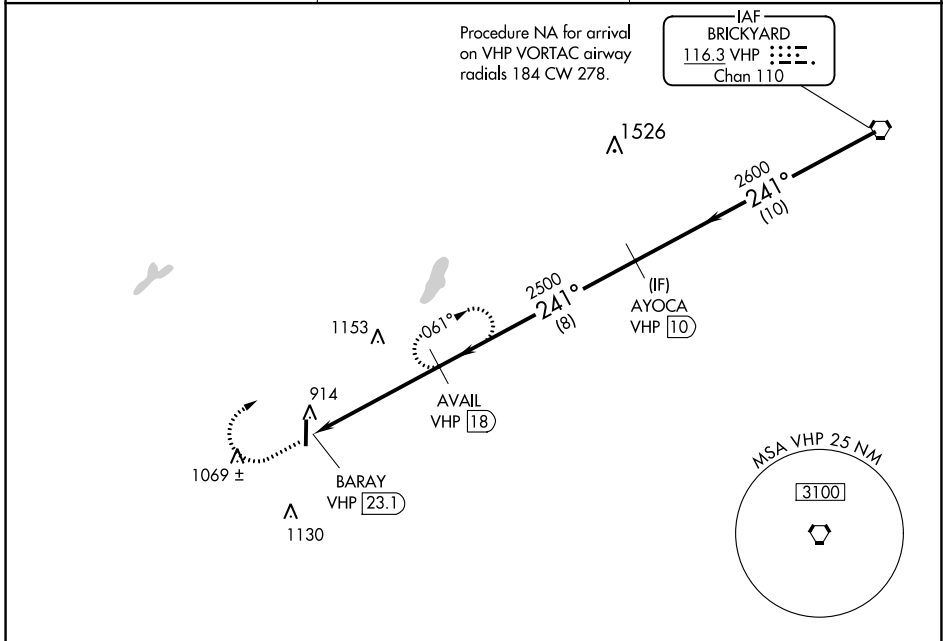
23166

VORTAC VHP <b>116.3</b> Chan <b>110</b>	APP CRS <b>241°</b>	Rwy Idg TDZE Apt Elev	<b>N/A</b> <b>N/A</b> <b>842</b>
---	------------------------	-----------------------------	--

**VOR-A**  
PUTNAM COUNTY RGNL (GPC)

<b>▼</b> DME required.	MISSED APPROACH: Climb to 1700 then climbing right turn to 2500 on VHP VORTAC R-241 to AVAIL/18 DME and hold.
------------------------	---

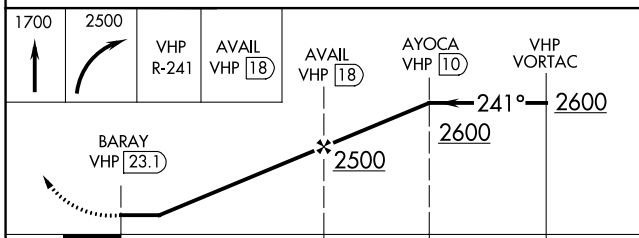
AWOS-3PT <b>118.125</b>	INDIANAPOLIS APP CON <b>119.05 317.8</b>	UNICOM <b>122.8</b> (CTAF) <b>0</b>
----------------------------	---	--



EC-2, 22 FEB 2024 to 21 MAR 2024

EC-2, 22 FEB 2024 to 21 MAR 2024

ELEV <b>842</b>
-----------------



CATEGORY	A	B	C	D	MRL Rwy 18-36 REIL Rwy 18
<b>C</b> CIRCLING	1420-1	578 (600-1)	1480-1 <sup>3</sup> / <sub>4</sub> 638 (700-1 <sup>3</sup> / <sub>4</sub> )	1480-2 638 (700-2)	<b>0</b>

GREENCASTLE, INDIANA  
Amdt 7 05JAN17

39°38'N-86°49'W

PUTNAM COUNTY RGNL (GPC)  
**VOR-A**