

(OOM5.OOM) 23334

HOOSIER FIVE DEPARTURE

AL-5514 (FAA)


SHELBYVILLE MUNI(GEZ)

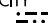
SHELBYVILLE, INDIANA

ASOS
121.55
INDIANAPOLIS DEP CON
127.15 317.8

**TOP ALTITUDE:
ASSIGNED BY ATC**

BRICKYARD
116.3 VHP 
Chan 110

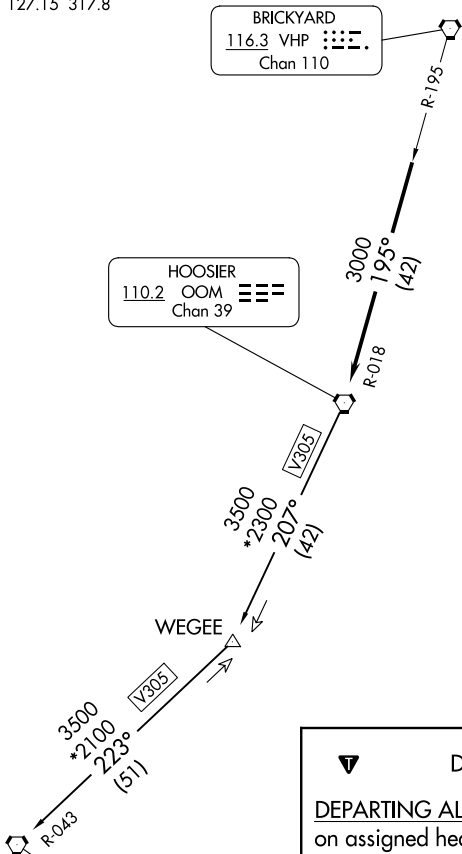
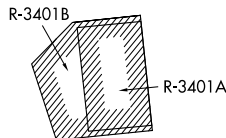
HOOSIER
110.2 OOM 
Chan 39

POCKET CITY
113.3 PXV 
Chan 80

TAKEOFF MINIMUMS:

Rwys 1, 19: Standard.

Rwys 9, 27: NA - Environmental.



DEPARTURE ROUTE DESCRIPTION

DEPARTING ALL OTHER AUTHORIZED RUNWAYS: Climb on assigned heading to assigned altitude. Thence....

....expect RADAR vectors to join VHP R-195 to OOM VORTAC then via transition or assigned route. Expect clearance to requested altitude ten minutes after departure.

POCKET CITY TRANSITION (OOM5.PXV): From over OOM VORTAC via OOM R-207 to WEGEE, then via PXV R-043 to PXV VORTAC.

NOTE: RADAR required.

NOTE: Select appropriate localizer/DME frequency/channel prior to departure.

NOTE: Turbojets accelerate to 250K until reaching 10000, if unable advise ATC.

NOTE: Assigned to aircraft with a requested altitude of 11000 or above.

NOTE: Chart not to scale.

HOOSIER FIVE DEPARTURE

(OOM5.OOM) 01FEB18

SHELBYVILLE, INDIANA

SHELBYVILLE MUNI(GEZ)

EC-2, 22 FEB 2024 to 21 MAR 2024

EC-2, 22 FEB 2024 to 21 MAR 2024