

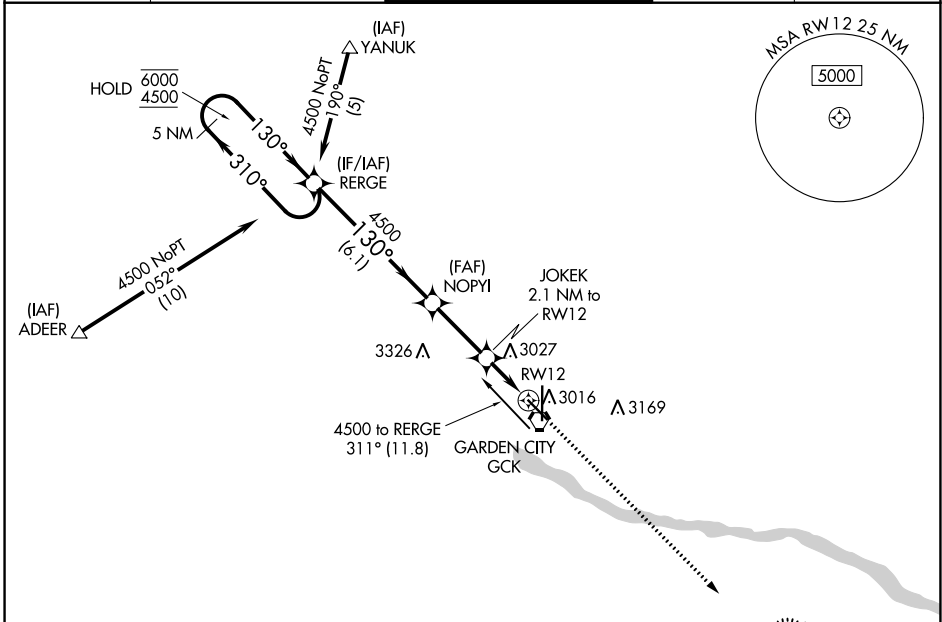
WAAS CH <b>77803</b> <b>W12A</b>	APP CRS <b>130°</b>	Rwy ldg TDZE Apt Elev	<b>5700</b> <b>2891</b> <b>2891</b>
--	------------------------	-----------------------------	---

# RNAV (GPS) RWY 12

GARDEN CITY RGNL (GCK)

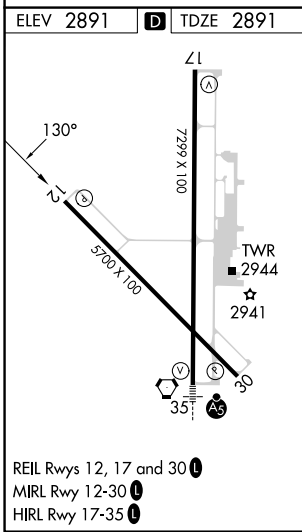
RNP APCH - GPS.		MISSED APPROACH: Climb to 4600 direct ORECA and hold.	
<p>▼ For uncompensated Baro-VNAV systems,                  ▲ procedure NA below -20°C or above 54°C.</p>			

ASOS <b>121,325</b>	KANSAS CITY CENTER <b>125.2 285.425</b>	GARDEN CITY TOWER* <b>118.15 (CTAF) 0 254.4</b>	GND CON <b>119.0 254.4</b>	UNICOM <b>122.95</b>
------------------------	--	--	-------------------------------	-------------------------



NC-2, 22 FEB 2024 to 21 MAR 2024

NC-2, 22 FEB 2024 to 21 MAR 2024



ELEV 2891	D	TDZE 2891	3930
<p>5 NM Holding Pattern</p> <p>6000 ← 310°</p> <p>4500 → 130°</p> <p>GP 3.00°</p> <p>TCH 47</p>		<p>4500</p> <p>NOPII</p> <p>JOKEK 2.1 NM to RWY 12</p> <p>3620</p> <p>1 NM to RWY 12</p> <p>RWY 12</p>	<p>4600</p> <p>ORECA</p>
		6.1 NM	2.8 NM
		1.2 NM	1 NM
CATEGORY	A	B	C
LPV DA	3141-1 250 (300-1)		
LNAV/VNAV DA	3141-1 250 (300-1)		
LNAV MDA	3240-1 349 (400-1)		
CIRCLING	3320-1 429 (500-1)	3360-1 469 (500-1)	3480-2 589 (600-2)