

RNAV (GPS) RWY 25

APCH CRS	Rwy Idg	8575
252°	TDZE	449
	Arpt Elev	449

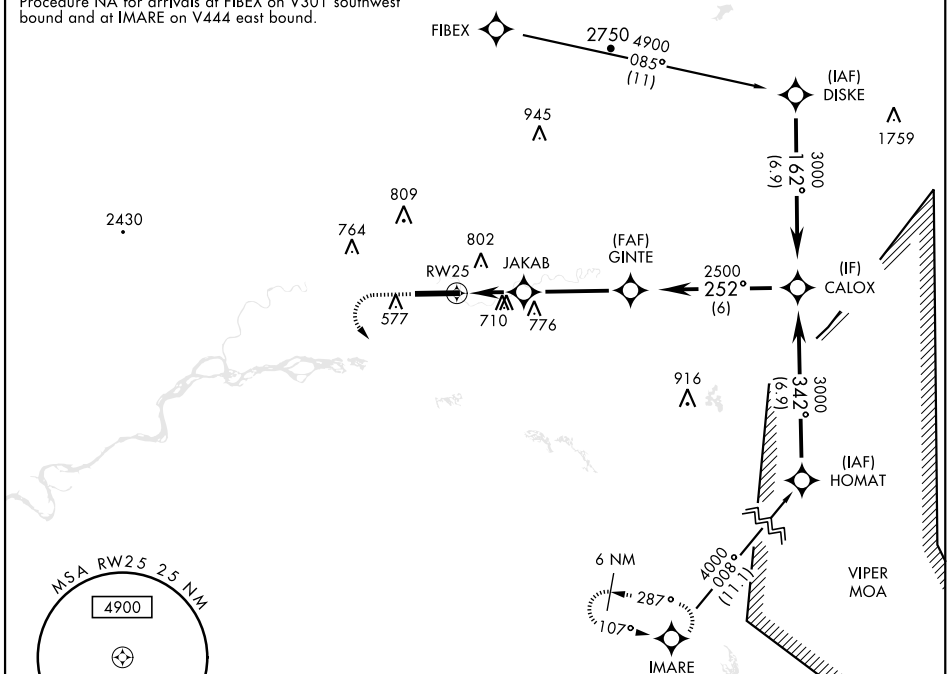
AL-1219 [USA]

LADD AAF (PAFB)

RNP APCH-GPS		ALSF-1	MISSED APPROACH: Climbing left turn to 4200 direct IMARE and hold.	
<p>▼ * When ALS inop, increase CAT CD vis to 1½ miles. ** Circling not authorized N of Rwy 7-25.</p>				

ATIS 134.25	FAIRBANKS APP CON 127.1 251.1 360° - 179° 125.35 363.2 180° - 359°	TOWER* 125.0 (CTAF) 0 284.6	GND CON 121.7 263.15	ASR/PAR
-----------------------	--	--	--------------------------------	---------

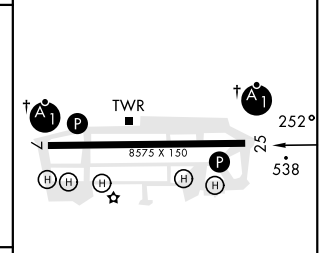
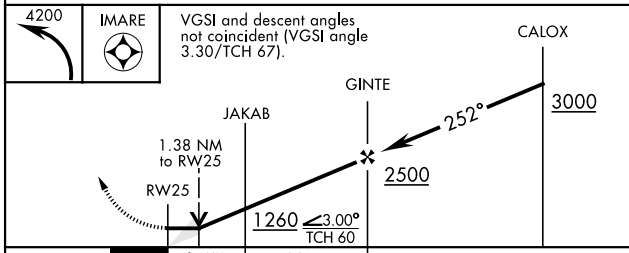
Procedure NA for arrivals at FIBEX on V301 southwest bound and at IMARE on V444 east bound.



AK, 25 JAN 2024 to 21 MAR 2024

AK, 25 JAN 2024 to 21 MAR 2024

ELEV	449	TDZE	449
------	------------	------	------------



CATEGORY	A	B	C	D
LNAV MDA*	1000-1 551 (600-1)		1000-1½ 551 (600-1½)	
** CIRCLING	1000-1 551 (600-1)	1040-1 591 (600-1)	1080-1¾ 631 (700-1¾)	1160-2¼ 711 (800-2¼)

HIRL Rwy 7-25 † ALS non-standard

FAIRBANKS/FORT WAINWRIGHT, ALASKA 64°50'N-147°37'W LADD AAF (PAFB)

Amdt 6 10AUG23

RNAV (GPS) RWY 25