

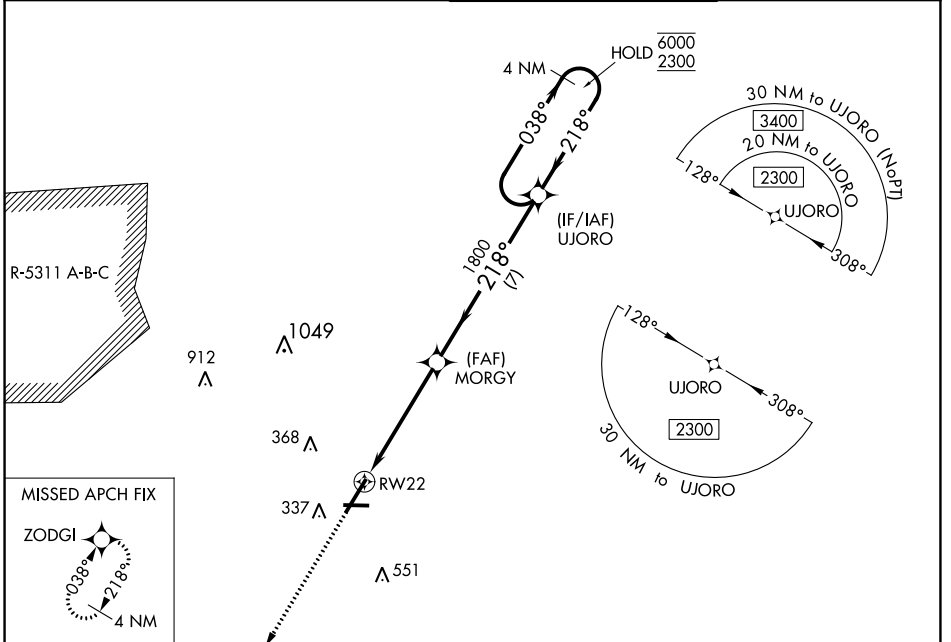
WAAS CH 45511 W22A	APP CRS 218°	Rwy Idg TDZE Apt Elev	6413 180 189
--	------------------------	-----------------------------	---

RNAV (GPS) RWY 22

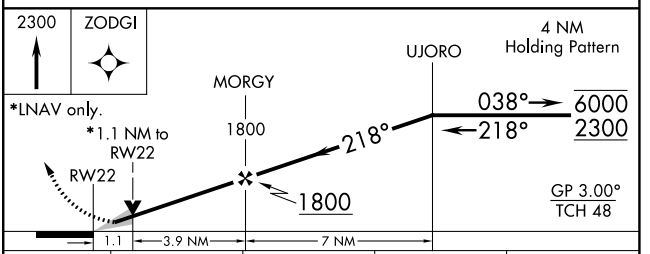
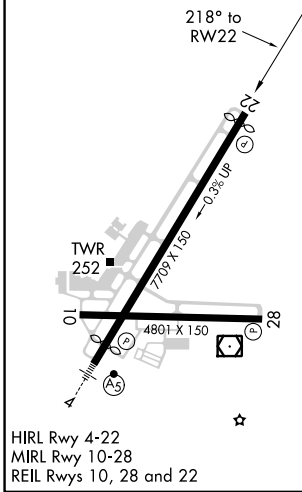
FAYETTEVILLE RGNL/GRANNIS FLD (FAY)

RNP APCH.	For uncompensated Baro-VNAV systems, LNAV/VNAV NA below -10°C or above 54°C.	MISSED APPROACH: Climb to 2300 direct ZODGI and hold.
-----------	--	---

ATIS 121.25	FAYETTEVILLE APP CON 133.0 290.25	FAYETTEVILLE TOWER 118.3 269.2	GND CON 121.7 348.6
-----------------------	---	--	-------------------------------



ELEV 189	D	TDZE 180
----------	----------	----------



CATEGORY	A	B	C	D
LPV DA		380-3/4	200 (200-3/4)	
LNAV/VNAV DA		437-3/4	257 (300-3/4)	
LNAV MDA		560-1	380 (400-1)	
C CIRCLING	640-1 451 (500-1)	660-1 471 (500-1)	860-2 671 (700-2)	860-2 1/4 671 (700-2 1/4)

SE-2, 22 FEB 2024 to 21 MAR 2024

SE-2, 22 FEB 2024 to 21 MAR 2024