

WAAS CH 61019 W02A	APP CRS 026°	Rwy Idg TDZE 930 Apt Elev 946	3998
--	------------------------	---	-------------

RNAV (GPS) RWY 2

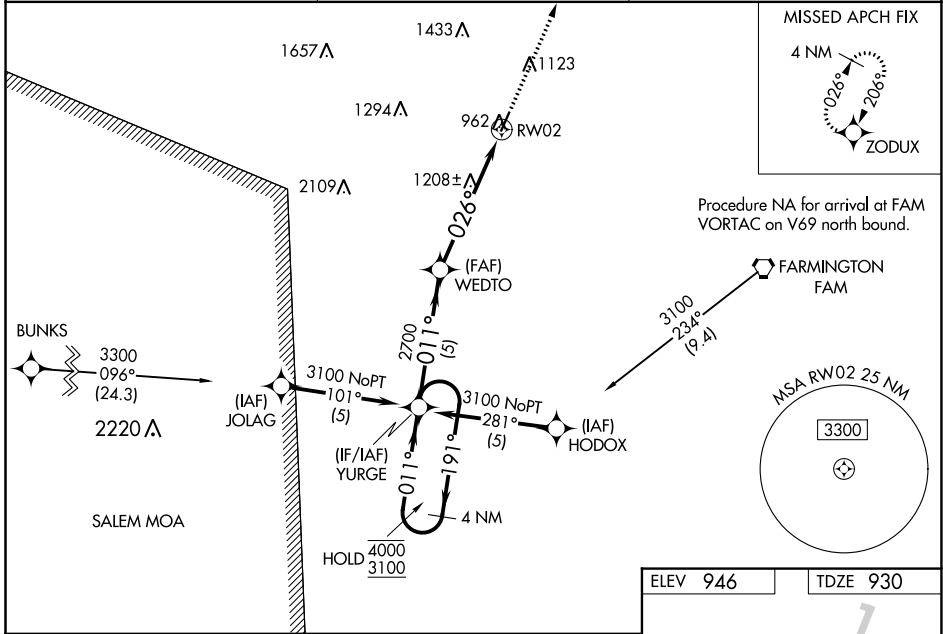
FARMINGTON RGNL (F.A.M)

RNP APCH - GPS.

⚠ Circling Rwy 20 NA at night. Baro-VNAV and VDP NA when using Sparta altimeter setting. Rwy 2 helicopter visibility reduction below $\frac{3}{4}$ SM NA. For uncompensated Baro-VNAV systems, LNAV/VNAV NA below -16°C or above 54°C . When local altimeter setting not received, use Sparta altimeter setting and increase LPV DA to 1334 feet and all visibilities $\frac{1}{8}$ SM, increase LNAV/VNAV DA to 1395 feet and all visibilities $\frac{3}{8}$ SM; increase all MDAs 160 feet.

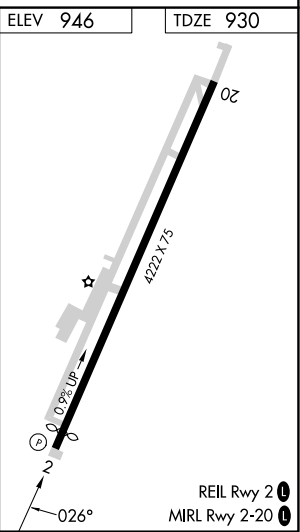
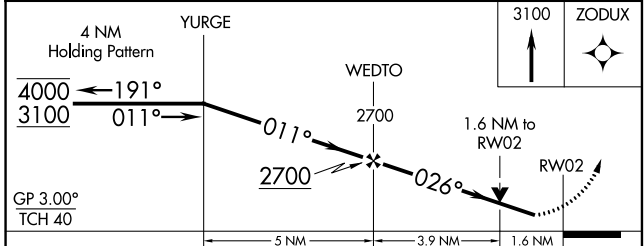
MISSED APPROACH: Climb to 3100 direct ZODUX and hold.

AWOS-3PT 119.275	KANSAS CITY CENTER 127.475 346.275	UNICOM 122.8 (CTAF)
----------------------------	--	-------------------------------



NC-3, 22 FEB 2024 to 21 MAR 2024

NC-3, 22 FEB 2024 to 21 MAR 2024



CATEGORY	A	B	C	D
LPV DA	1180-1	250 (300-1)		NA
LNAV/VNAV DA	1241-1	311 (300-1)		NA
LNAV MDA	1460-1	530 (600-1)		NA
C CIRCLING	1460-1 514 (600-1)	1500-1 554 (600-1)		NA