

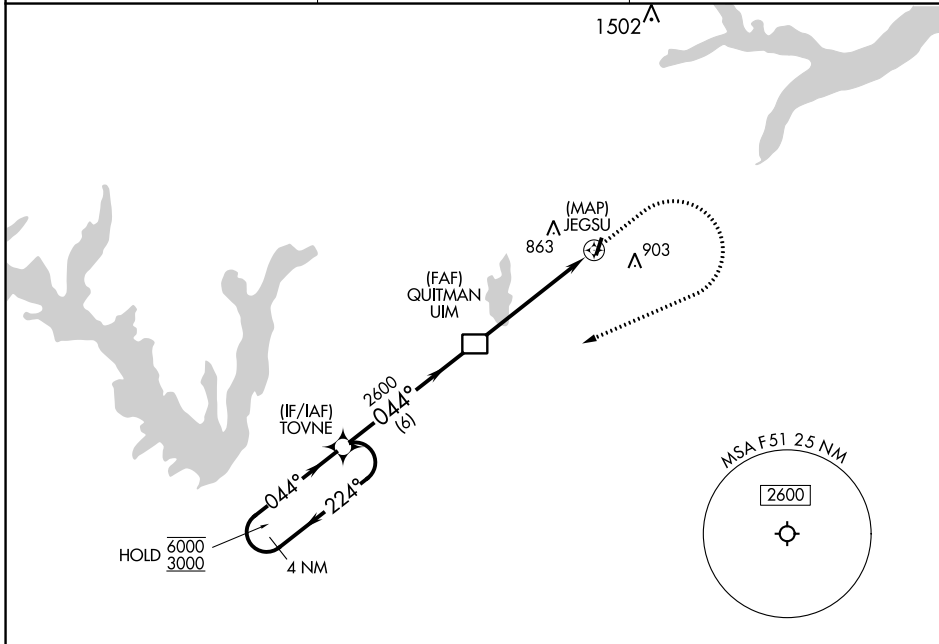
APP CRS	Rwy Idg	N/A
<b>044°</b>	TDZE	N/A
	Apt Elev	<b>513</b>

# RNAV (GPS)-A

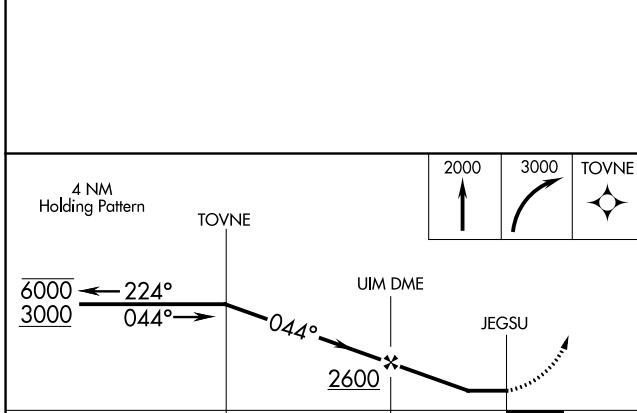
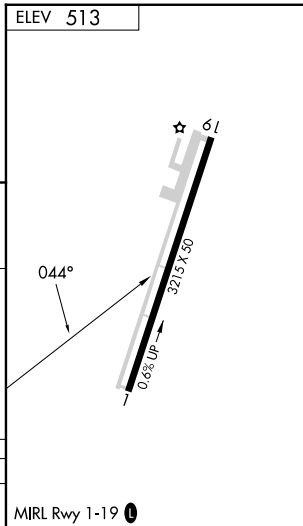
WINNSBORO MUNI (F51)

RNP APCH.	Procedure NA at night. Use Tyler altimeter setting; when not received, use Longview altimeter setting and increase all MDA 40 feet.	MISSED APPROACH: Climb to 2000 then climbing right turn to 3000 direct TOVNE and hold.
▼ NA		

TYR ASOS <b>126.25</b>	LONGVIEW APP CON* <b>128.75 379.15</b>	CTAF <b>122.9 0</b>
---------------------------	---	------------------------



SC-2, 22 FEB 2024 to 21 MAR 2024



CATEGORY	A	B	C	D
CIRCLING	1100-1 587 (600-1)	1340-1¼ 827 (900-1¼)	1340-2½ 827 (900-2½)	NA