

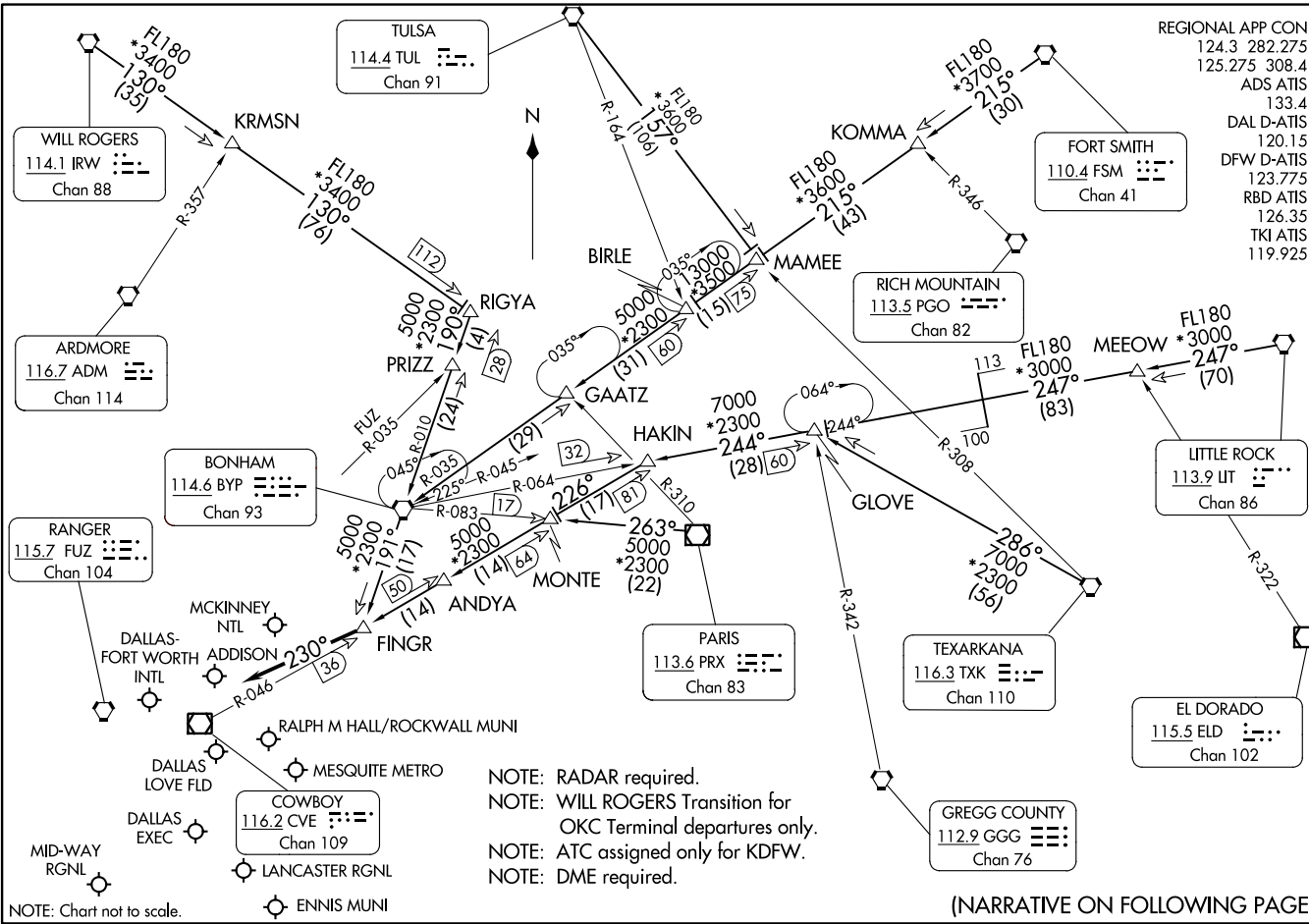
FINGR NINE ARRIVAL
(FINGR, FINGR9) 20APR23

FINGR NINE ARRIVAL
(FINGR, FINGR9) 23334

AL-106 (FAA)

DALLAS-FORT WORTH, TEXAS

REGIONAL APP CON
 124.3 282.275
 125.275 308.4
 ADS ATIS 133.4
 DAL D-ATIS 120.15
 DFW D-ATIS 123.775
 RBD ATIS 126.35
 TKI ATIS 119.925



NOTE: RADAR required.
 NOTE: WILL ROGERS Transition for OKC Terminal departures only.
 NOTE: ATC assigned only for KDFW.
 NOTE: DME required.

(NARRATIVE ON FOLLOWING PAGE)

DALLAS-FORT WORTH, TEXAS

ARRIVAL ROUTE DESCRIPTION

BONHAM TRANSITION (BYP.FINGR9): From over BYP VORTAC on BYP R-191 to FINGR. Thence

FORT SMITH TRANSITION (FSM.FINGR9): From over FSM VORTAC on FSM R-215 to MAMEE, then on BYP R-035 to BYP VORTAC, then on BYP R-191 to FINGR. Thence

LITTLE ROCK TRANSITION (LIT.FINGR9): From over LIT VORTAC on LIT R-247 to MEEOW, then on LIT R-247 and BYP R-064 to GLOVE, then on BYP R-064 to HAKIN, then on CVE R-046 to FINGR. Thence

PARIS TRANSITION (PRX.FINGR9): From over PRX VOR/DME on PRX R-263 to MONTE, then on CVE R-046 to FINGR. Thence

RIGYA TRANSITION (RIGYA.FINGR9): From over RIGYA on BYP R-010 to BYP VORTAC, then on BYP R-191 to FINGR. Thence

TEXARKANA TRANSITION (TXK.FINGR9): From over TXK VORTAC on TXK R-286 to GLOVE, then on BYP R-064 to HAKIN, then on CVE R-046 to FINGR. Thence

TULSA TRANSITION (TUL.FINGR9): From over TUL VORTAC on TUL R-157 to MAMEE, then on BYP R-035 to BYP VORTAC, then on BYP R-191 to FINGR. Thence

WILL ROGERS TRANSITION (IRW.FINGR9): From over IRW VORTAC on IRW R-130 to RIGYA, then on BYP R-010 to BYP VORTAC, then on BYP R-191 to FINGR. Thence

. . . . from FINGR, then on heading 230° or as assigned by ATC. Expect RADAR vectors to final approach course.

SC-2, 22 FEB 2024 to 21 MAR 2024

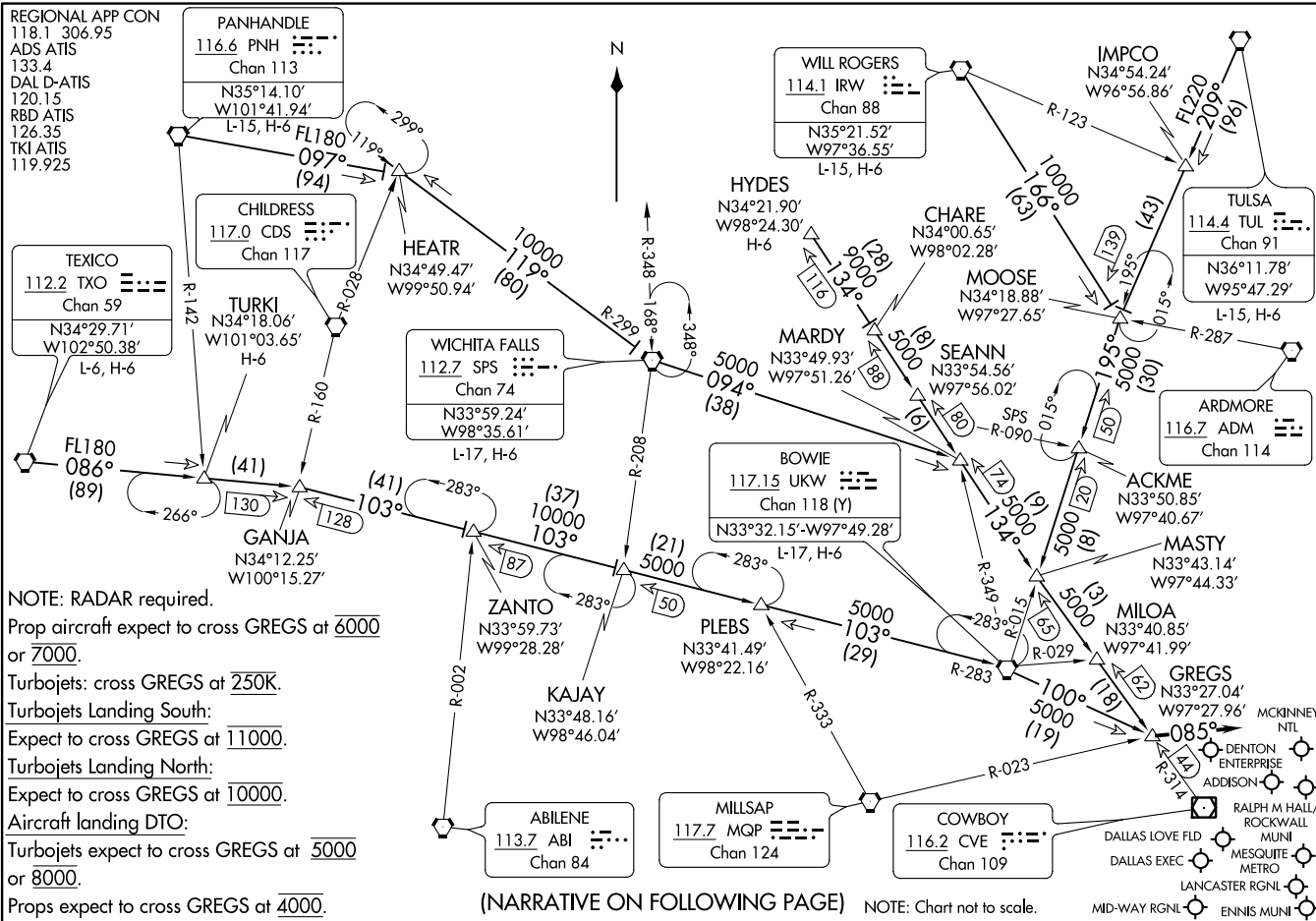
SC-2, 22 FEB 2024 to 21 MAR 2024

GREGS ONE ARRIVAL
(GREGS, GREGS 1) 14JUL22

(GREGS, GREGS 1) 22195
GREGS ONE ARRIVAL

AL-106 (FAA)

DALLAS-FORT WORTH, TEXAS



(NARRATIVE ON FOLLOWING PAGE)

NOTE: Chart not to scale.

DALLAS-FORT WORTH, TEXAS

ARRIVAL DESCRIPTION

BOWIE TRANSITION (UKW.GREGS1): From over UKW VORTAC on UKW R-100 to GREGS. Thence. . . .

HYDES TRANSITION (HYDES.GREGS1): From over HYDES on CVE R-314 to GREGS. Thence. . . .

PANHANDLE TRANSITION (PNH.GREGS1): From over PNH VORTAC on PNH R-097 to HEATR, then on SPS R-299 to SPS VORTAC, then on SPS R-094 to MARDY, then on CVE R-314 to GREGS. Thence. . . .

TEXICO TRANSITION (TXO.GREGS1): From over TXO VORTAC on TXO R-086 to GANJA, then on UKW R-283 to UKW VORTAC, then on UKW R-100 to GREGS. Thence. . . .

TULSA TRANSITION (TUL.GREGS1): From over TUL VORTAC on TUL R-209 to MOOSE, then on UKW R-015 to MASTY, then on CVE R-314 to GREGS. Thence. . . .

TURKI TRANSITION (TURKI.GREGS1): From over TURKI on TXO R-086 to GANJA, then on UKW R-283 to UKW VORTAC, then on UKW R-100 to GREGS. Thence. . . .

WICHITA FALLS TRANSITION (SPS.GREGS1): From over SPS VORTAC on SPS R-094 to MARDY, then on CVE R-314 to GREGS. Thence. . . .

WILL ROGERS TRANSITION (IRW.GREGS1): From over IRW VORTAC on IRW R-166 to MOOSE, then on UKW R-015 to MASTY, then on CVE R-314 to GREGS. Thence. . . .

. . . .from over GREGS, depart GREGS heading 085°. Expect RADAR vectors to final approach course.

SC-2, 22 FEB 2024 to 21 MAR 2024

SC-2, 22 FEB 2024 to 21 MAR 2024

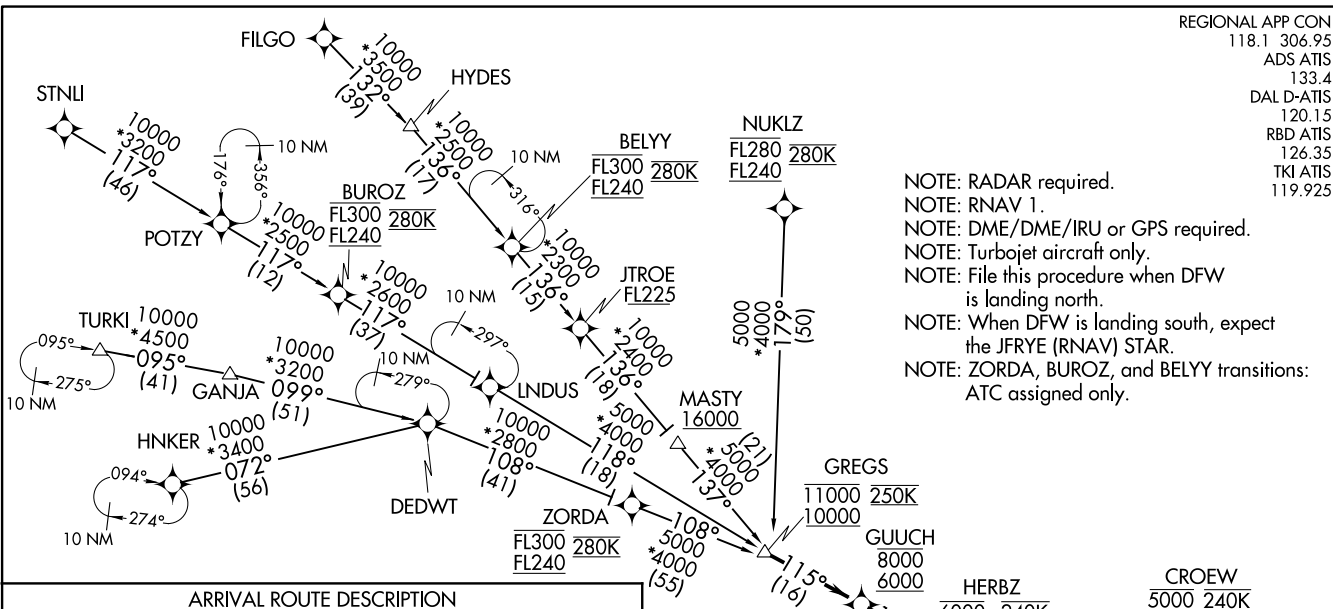
HERBZ ONE ARRIVAL (RNAV)
(GREGS.HERBZ1) 17JUN21

(GREGS.HERBZ1) 21224
HERBZ ONE ARRIVAL (RNAV)

A1-106 (FAA)

REGIONAL APP CON
118.1 306.95
ADS ATIS
133.4
DAL D-ATIS
120.15
RBD ATIS
126.35
TKI ATIS
119.925

NOTE: RADAR required.
NOTE: RNAV 1.
NOTE: DME/DME/IRU or GPS required.
NOTE: Turbojet aircraft only.
NOTE: File this procedure when DFW is landing north.
NOTE: When DFW is landing south, expect the JFRYE (RNAV) STAR.
NOTE: ZORDA, BUROZ, and BELYI transitions: ATC assigned only.



ARRIVAL ROUTE DESCRIPTION

- BELYI TRANSITION (BELYI.HERBZ1)
- BUROZ TRANSITION (BUROZ.HERBZ1)
- FILGO TRANSITION (FILGO.HERBZ1)
- HNKER TRANSITION (HNKER.HERBZ1)
- HYDES TRANSITION (HYDES.HERBZ1)
- NUKLZ TRANSITION (NUKLZ.HERBZ1)
- STNLI TRANSITION (STNLI.HERBZ1)
- TURKI TRANSITION (TURKI.HERBZ1)
- ZORDA TRANSITION (ZORDA.HERBZ1)

LANDING ALL AIRPORTS: From GREGS on track 115° to cross GUUCH between 6000 and 8000, then on track 115° to cross HERBZ at 6000 and at 240K, then on track 113° to cross CROEW at 5000 and at 240K, then on track 113°. Expect RADAR vectors to final approach course.

NOTE: Chart not to scale.

DALLAS, TEXAS

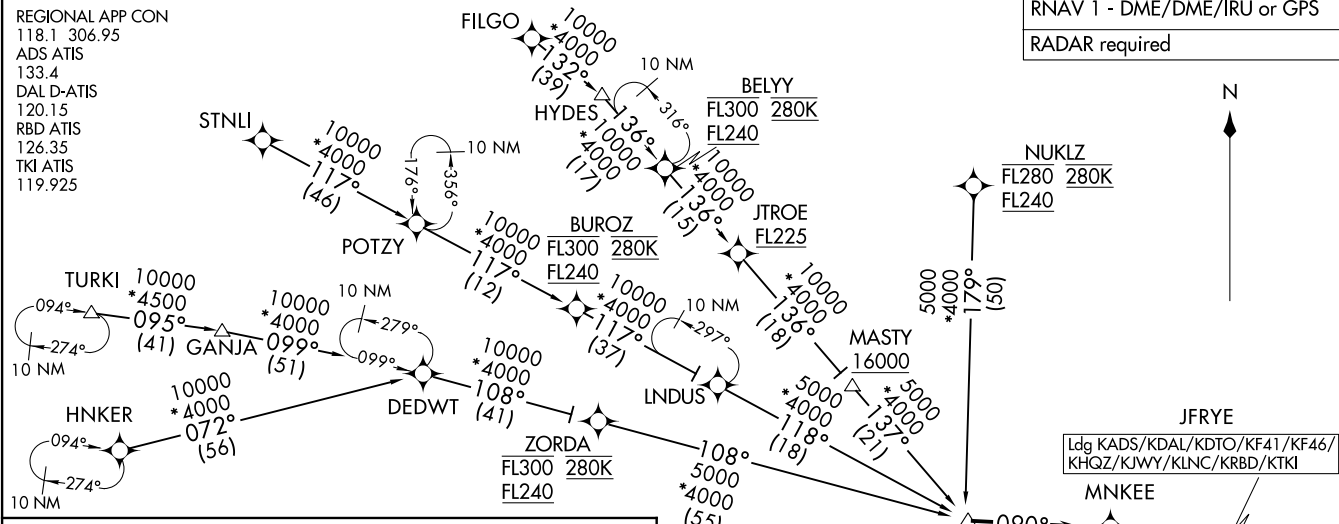
DALLAS, TEXAS

JFRYE FIVE ARRIVAL (RNAV)
 (GREGS.JFRYE5) 14JUL22

(GREGS.JFRYE5) 22195
 JFRYE FIVE ARRIVAL (RNAV)

REGIONAL APP CON
 118.1 306.95
 ADS ATIS
 133.4
 DAL D-ATIS
 120.15
 RBD ATIS
 126.35
 TKI ATIS
 119.925

RNAV 1 - DME/DME/IRU or GPS
 RADAR required



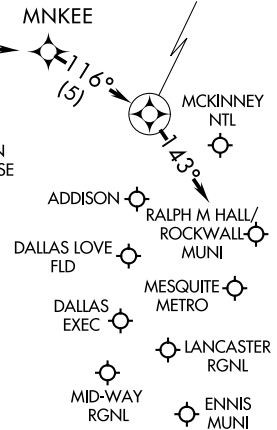
ARRIVAL ROUTE DESCRIPTION

- BELY TRANSITION (BELY.JFRYE5)
- BUROZ TRANSITION (BUROZ.JFRYE5)
- FILGO TRANSITION (FILGO.JFRYE5)
- HNKER TRANSITION (HNKER.JFRYE5)
- HYDES TRANSITION (HYDES.JFRYE5)
- NUKLZ TRANSITION (NUKLZ.JFRYE5)
- STNLI TRANSITION (STNLI.JFRYE5)
- TURKI TRANSITION (TURKI.JFRYE5)
- ZORDA TRANSITION (ZORDA.JFRYE5)

LANDING ALL AIRPORTS: From GREGS on track 090° to MNKEE, then on track 116° to JFRYE, then on track 143°. Expect RADAR vectors to final approach course.

- NOTE: Jet aircraft only.
- NOTE: When DFW is landing north, expect the HERBZ RNAV STAR.
- NOTE: ZORDA, BUROZ, and BELY Enroute Transitions - ATC assigned only.

NOTE: Chart not to scale.



AL-106 (FAA)

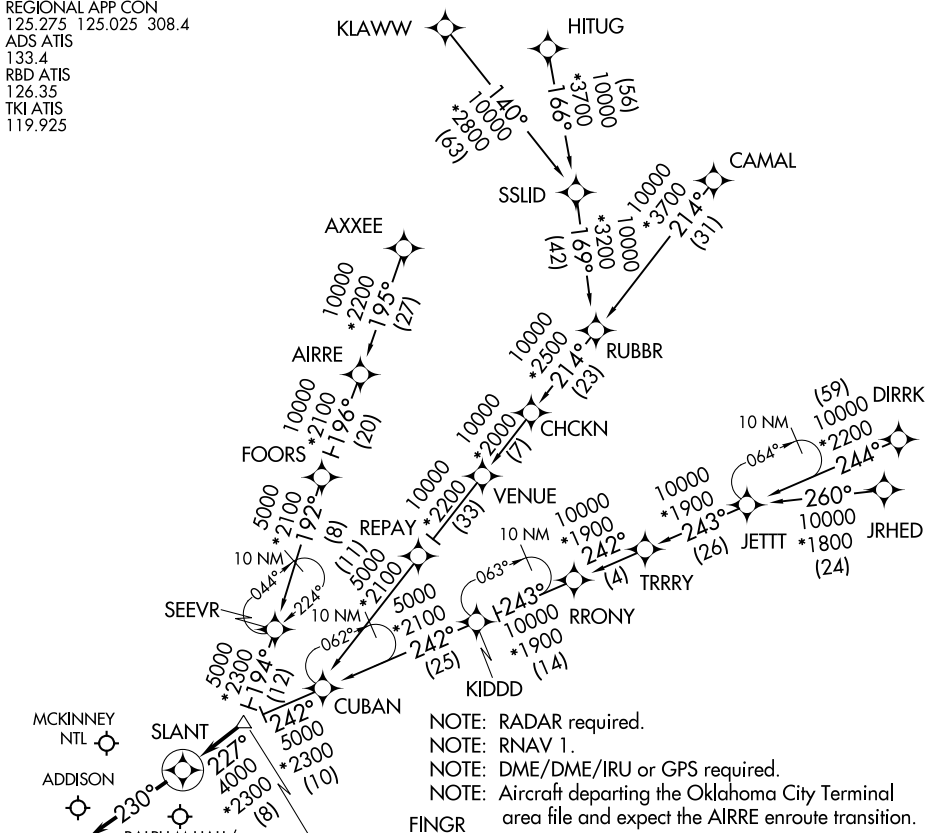
DALLAS, TEXAS

DALLAS, TEXAS

SLANT THREE ARRIVAL (RNAV)

DALLAS, TEXAS

REGIONAL APP CON
 125.275 125.025 308.4
 ADS ATIS
 133.4
 RBD ATIS
 126.35
 TKI ATIS
 119.925



NOTE: RADAR required.
 NOTE: RNAV 1.
 NOTE: DME/DME/IRU or GPS required.
 NOTE: Aircraft departing the Oklahoma City Terminal area file and expect the AIRRE enroute transition.

VERTICAL NAVIGATION
PLANNING INFORMATION
 TURBOJETS: Expect 8000
 PROPS: Expect 6000 or 7000

NOTE: Chart not to scale.

ARRIVAL ROUTE DESCRIPTION

AIRRE TRANSITION (AIRRE.SLANT3): (For traffic filing FL190 and below.)

AXXEE TRANSITION (AXXEE.SLANT3): (For aircraft filing FL230 and below.)

CAMAL TRANSITION (CAMAL.SLANT3)

DIRRK TRANSITION (DIRRK.SLANT3)

HITUG TRANSITION (HITUG.SLANT3)

JRHED TRANSITION (JRHD.SLANT3): (ATC assigned only.)

KLAWWW TRANSITION (KLAWWW.SLANT3)

RRONY TRANSITION (RRONY.SLANT3): (For aircraft filing FL230 and below.)

From FINGR on track 227° to SLANT, then on track 230°.
 Expect RADAR vectors to final approach course.

SC-2, 22 FEB 2024 to 21 MAR 2024

SC-2, 22 FEB 2024 to 21 MAR 2024

SLANT THREE ARRIVAL (RNAV)

DALLAS, TEXAS

SWWAY FOUR ARRIVAL (RNAV)
 (KNEAD.SWWAY4) 26MAY16

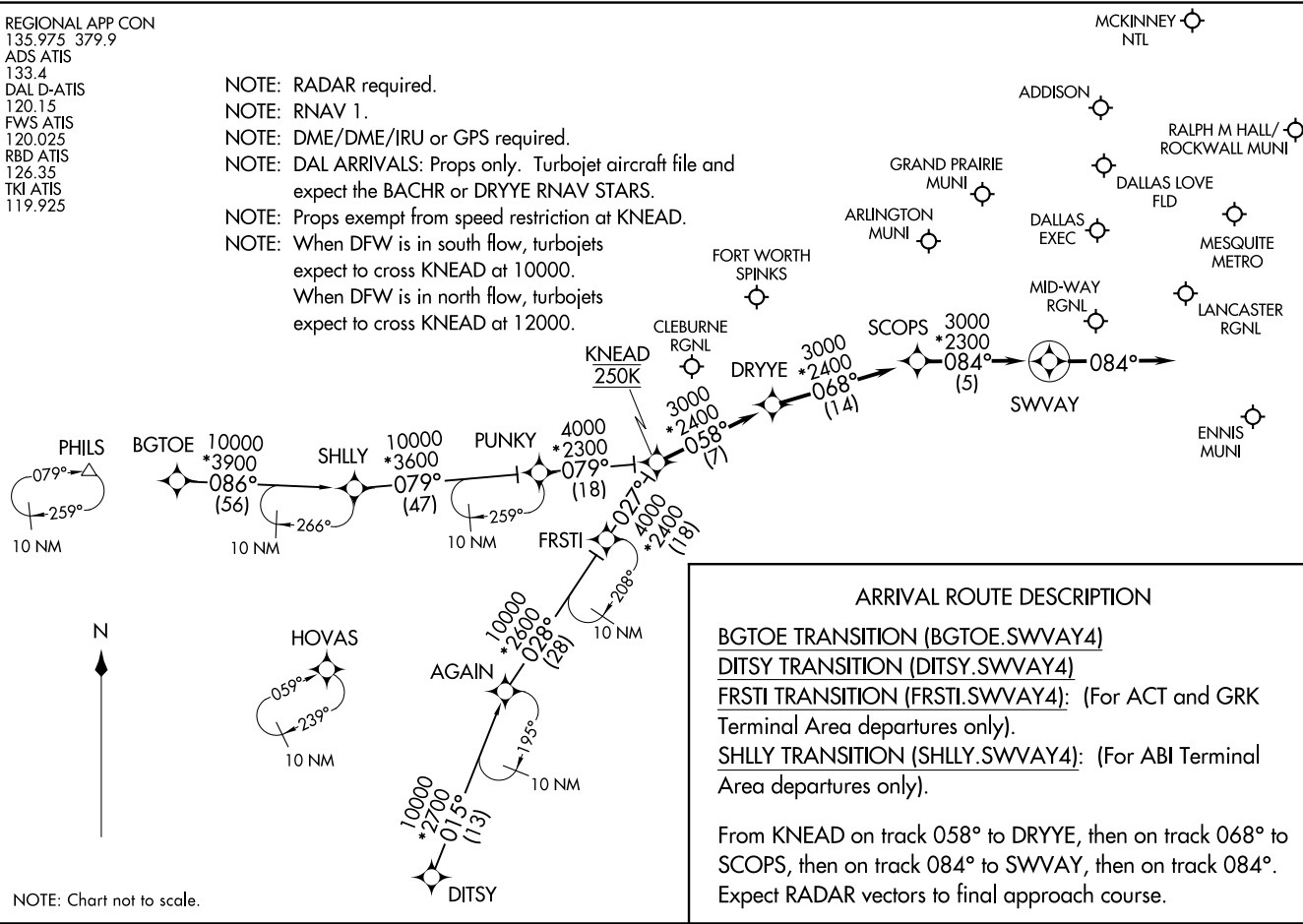
(KNEAD.SWWAY4) 23222
 SWWAY FOUR ARRIVAL (RNAV)

AL-768 (FAA)

DALLAS, TEXAS

REGIONAL APP CON
 135.975 379.9
 ADS ATIS
 133.4
 DAL D-ATIS
 120.15
 FWS ATIS
 120.025
 RBD ATIS
 126.35
 TKI ATIS
 119.925

- NOTE: RADAR required.
- NOTE: RNAV 1.
- NOTE: DME/DME/IRU or GPS required.
- NOTE: DAL ARRIVALS: Props only. Turbojet aircraft file and expect the BACHR or DRYYE RNAV STARS.
- NOTE: Props exempt from speed restriction at KNEAD.
- NOTE: When DFW is in south flow, turbojets expect to cross KNEAD at 10000.
- NOTE: When DFW is in north flow, turbojets expect to cross KNEAD at 12000.



DALLAS, TEXAS