

ENID, OKLAHOMA

VOR/DME or TACAN RWY 17R

VORTAC END 115.4 Chan 101	APCH CRS 162°	Rwy Idg 9217 TDZE 1287 Arprt Elev 1307
---	-------------------------	---

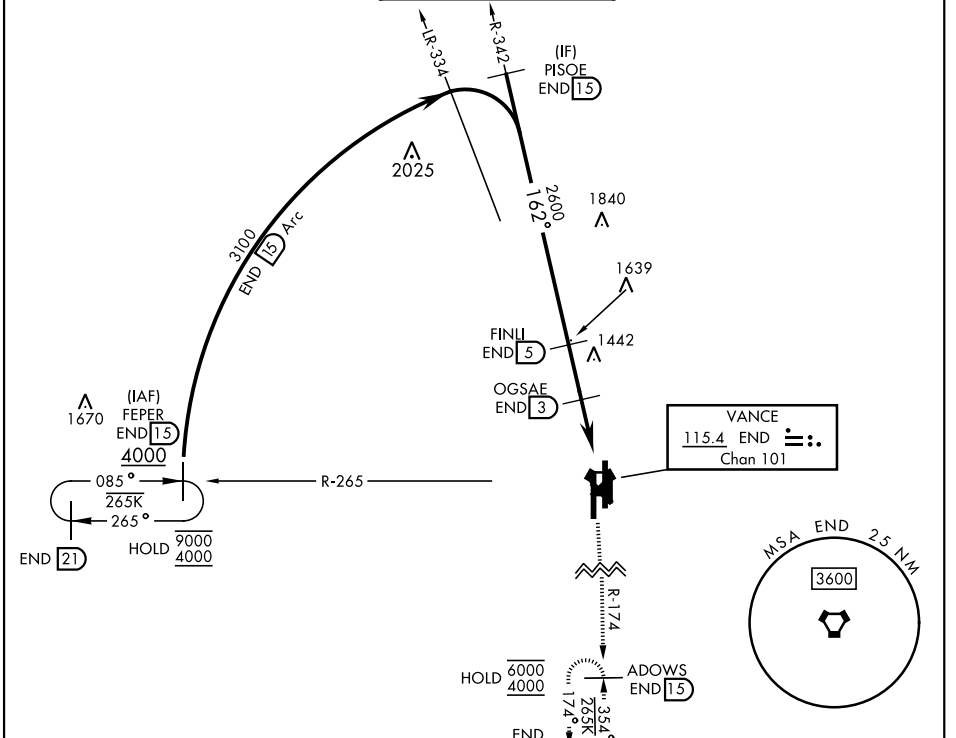
AL-135 [USAF]

VANCE AFB (KEND)

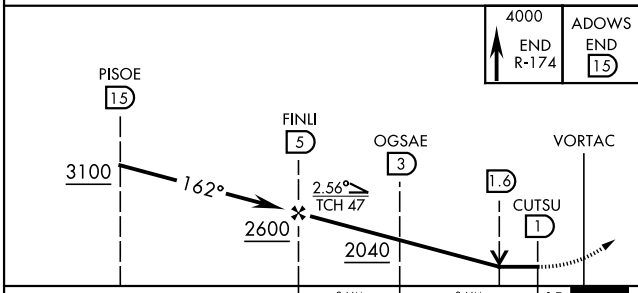
▼ * When ALS inop, increase CAT AB vis to 1 mile, CAT CDE vis to 1½ miles.

SALS (A2) MISSED APPROACH: Climb to 4000, intercept END VORTAC R-174 to ADOWS and hold.

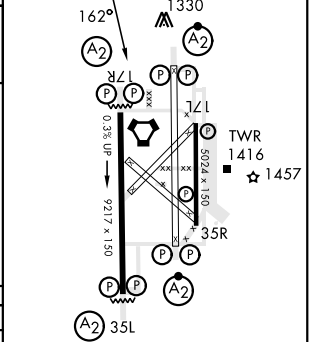
ATIS ★ 115.4 263.15	APP CON 125.45 388.2 EAST 126.75 346.325 WEST	TOWER ★ 124.05 259.1	GND CON 121.675 289.4	CLNC DEL 225.4
-------------------------------	---	--------------------------------	---------------------------------	--------------------------



EMERG SAFE ALT 100 NM 4500



ELEV 1307	TDZE 1287
-----------	-----------



CATEGORY	A	B	C	D	E
S-17R *	1680-¾	393 (400-¾)	1680-7/8	393 (400-7/8)	
⊙ CIRCLING	1760-1	453 (500-1)	1800-1½ 493 (500-1½)	1900-2 593 (600-2)	2300-3 993 (1000-3)

HIRL Rwy 17C-35C, 17R-35L
MIRL Rwy 17L-35R
REIL Rwy 17L-35R

ENID, OKLAHOMA
Amdt 5 06OCT22

36° 20' N - 97° 55' W

VANCE AFB (KEND)

VOR/DME or TACAN RWY 17R

SC-1, 22 FEB 2024 to 21 MAR 2024

SC-1, 22 FEB 2024 to 21 MAR 2024