

29110

WAPAX FOUR DEPARTURE (WAPAX4•WAPAX)

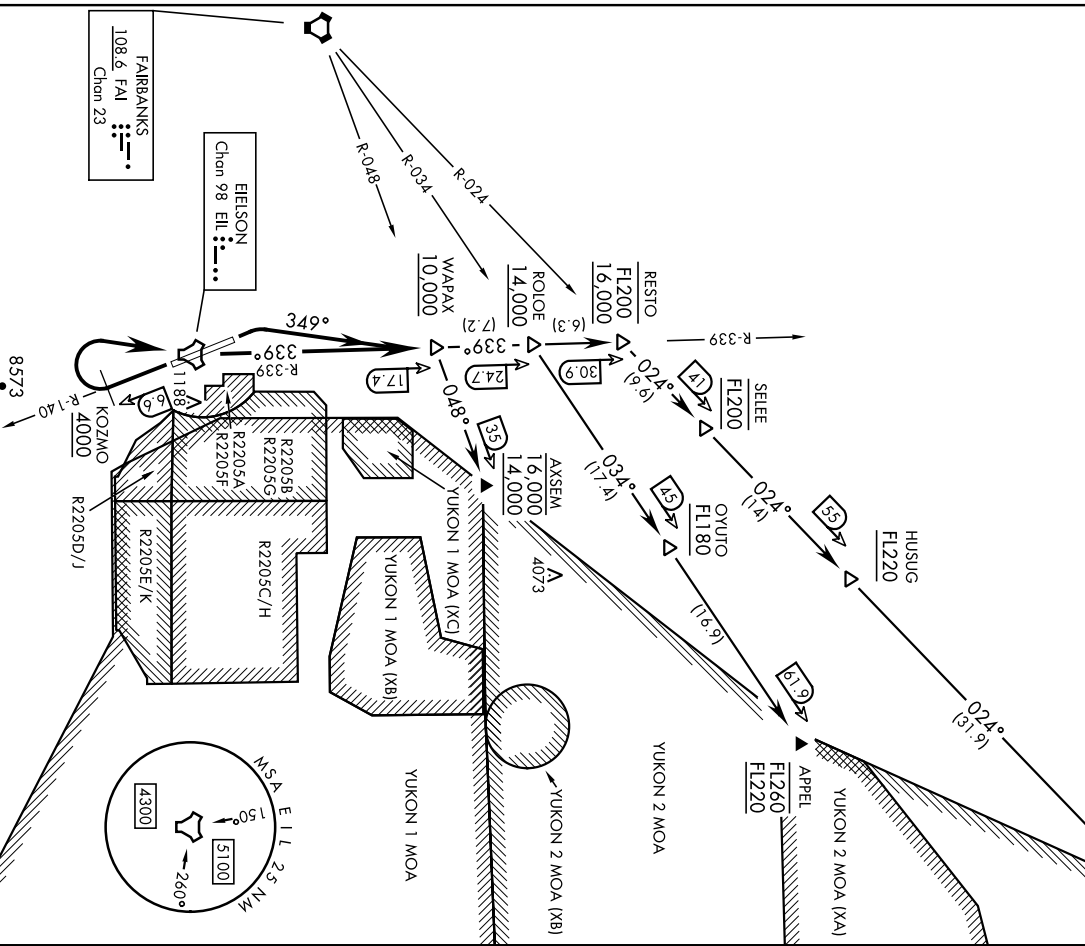
EIELSON AFB (PAE)
FAIRBANKS, ALASKA
RADAR required

ATIS * 119.9 273.5	Rwy	Knots	60	120	180	240	300	360
CINC DEL 343.7	14	(G) (C) V/Vifpm)	563	1126	1689	2252	2815	3378
GND CON 121.8 275.8	32	(G) (C) V/Vifpm)	612	1224	1836	2448	3060	3672
TOWER * 127.2 352.05	ATC Climb Rate							
FAIRBANKS DEP CON 127.1 251.1	(C) DER to 14,000 (AXSEM Transition) (D) DER to FL220 (APPEL Transition) (E) DER to FL200 (CABIN Transition)							

ATC Climb Rate

- (C) DER to 14,000 (AXSEM Transition)
- (D) DER to FL220 (APPEL Transition)
- (E) DER to FL200 (CABIN Transition)

AK, 25 JAN 2024 to 21 MAR 2024



AK, 25 JAN 2024 to 21 MAR 2024

(NARRATIVE ON FOLLOWING PAGE)

WAPAX FOUR DEPARTURE (WAPAX4•WAPAX)

FAIRBANKS, ALASKA
EIELSON AFB (PAE)
Orig 20APR23

WAPAX FOUR DEPARTURE (WAPAX4 • WAPAX)EIELSON AFB (PAEI)
FAIRBANKS, ALASKA

AL-1729 [USAF]

DEPARTURE ROUTE DESCRIPTION

TAKEOFF RWY 14: Turn right to intercept EIL TACAN R-140 to KOZMO. Cross KOZMO at or above 4000, then turn right direct EIL to intercept EIL R-339 outbound to WAPAX. Cross WAPAX at or above 10,000. Thence . . .

TAKEOFF RWY 32: Turn right heading 349° to intercept EIL TACAN R-339 to WAPAX. Cross WAPAX at or above 10,000. Thence . . .

APPEL GATE TRANSITION (WAPAX4 • APPEL): Cross ROLOE at or above 14,000. Turn right track outbound on FAI VORTAC R-034 direct OYUTO, direct APPEL. Cross OYUTO at or above FL180, cross APPEL at or above FL220 block FL260.

AXSEM GATE TRANSITION (WAPAX4 • AXSEM): Turn right and track outbound on FAI VORTAC R-048 to AXSEM. Cross AXSEM at or above 14,000 block 16,000.

CABIN GATE TRANSITION (WAPAX4 • CABIN): Cross RESTO at or above 16,000 block FL200. Turn right and track outbound on FAI VORTAC R-024 direct SELEE, direct HUSUG, direct CABIN. Cross SELEE at FL200, cross HUSUG at or above FL220, cross CABIN at or above FL220 block FL260.

WAPAX FOUR DEPARTURE (WAPAX4 • WAPAX)

Orig 20APR23

FAIRBANKS, ALASKA
EIELSON AFB (PAEI)