

WAAS CH 65813 W16A	APP CRS 155°	Rwy Idg 5816 TDZE 3174 Apt Elev 3174
--	------------------------	---

RNAV (GPS) RWY 16

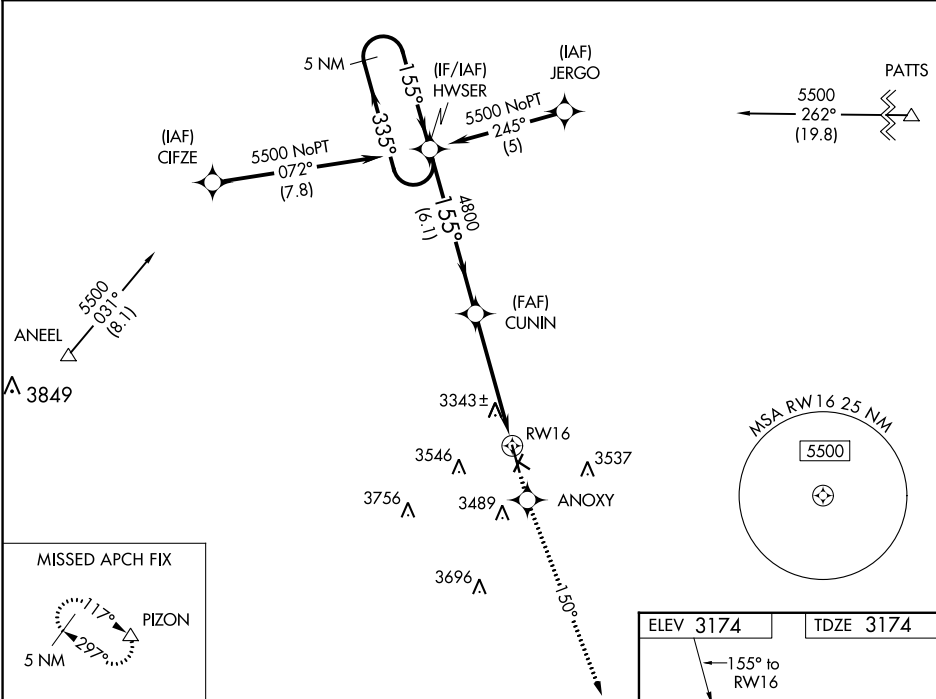
ANDREWS COUNTY (E11)

RNP APCH-GPS.

⚠ Circling NA west of Rwy 16/34. Rwy 16 helicopter visibility reduction below 3/4 SM NA.
⚠ When local altimeter setting not received, use Midland altimeter setting. For uncompensated Baro-VNAV systems, LNAV/VNAV NA below -21°C or above 54°C. Circling Rwy 2, 11, 20, 29, 34 NA at night. VDP NA when using Midland altimeter setting.

MISSED APPROACH: Climb to 5000 direct ANOXY and via track 150° to PIZON and hold.

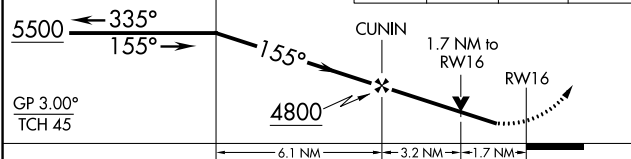
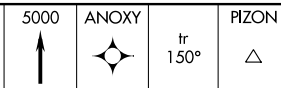
AWOS - 3 118.2	MIDLAND APP CON ★ 124.6 290.4	UNICOM 122.8 (CTAF) ①
--------------------------	---	---------------------------------



SC-2, 22 FEB 2024 to 21 MAR 2024

SC-2, 22 FEB 2024 to 21 MAR 2024

VGSI and RNAV glidepath not coincident (VGSI Angle 3.00/TCH 37).
 5 NM Holding Pattern HWSER



CATEGORY	A	B	C	D
LPV DA	3533-1 1/4	359 (400-1 1/4)		NA
LNAV/VNAV DA	3802-2 1/4	628 (700-2 1/4)		NA
LNAV MDA	3780-1	606 (700-1)	3780-1 3/4 606 (700-1 3/4)	NA
CIRCLING	3780-1	606 (700-1)	4000-2 1/2 826 (900-2 1/2)	NA

