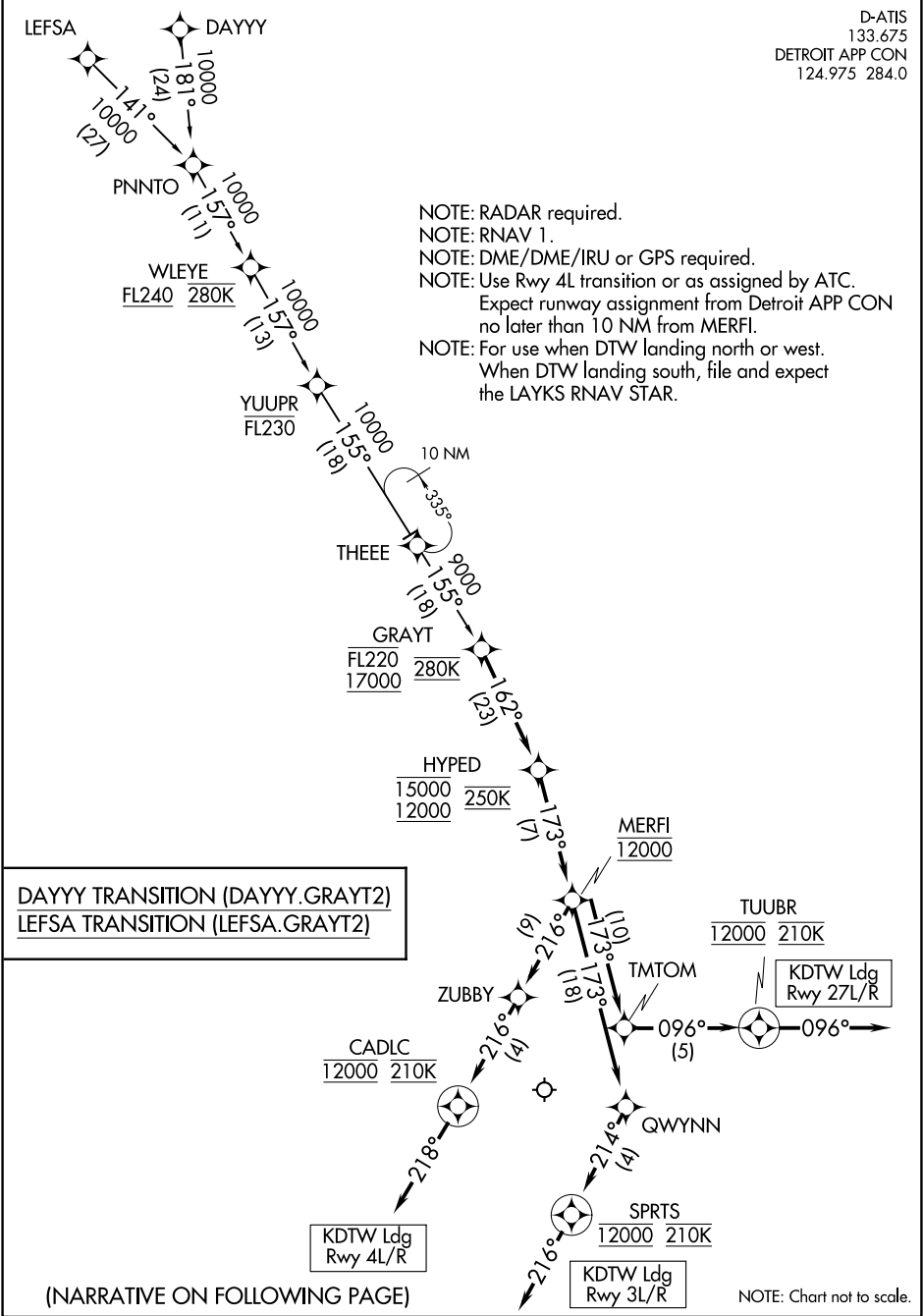


(GRAYT.GRAYT2) 21112  
GRAYT TWO ARRIVAL(RNAV)

AL-119 (FAA)

DETROIT METRO WAYNE COUNTY (DTW)  
DETROIT, MICHIGAN

D-ATIS  
133.675  
DETROIT APP CON  
124.975 284.0



EC-1, 22 FEB 2024 to 21 MAR 2024

EC-1, 22 FEB 2024 to 21 MAR 2024

GRAYT TWO ARRIVAL(RNAV)  
(GRAYT.GRAYT2) 10OCT19

DETROIT, MICHIGAN  
DETROIT METRO WAYNE COUNTY (DTW)

ARRIVAL ROUTE DESCRIPTION

From GRAYT on track 162° to cross HYPED between 12000 and 15000 and at 250K, then on track 173° to cross MERFI at 12000.

LANDING RWY 3L/R: From MERFI on track 173° to QWYNN, then on track 214° to cross SPRTS at 12000 and at 210K, then on track 216°.  
Expect RADAR vectors to final approach course.

LANDING RWY 4L/R: From MERFI on track 216° to ZUBBY, then on track 216° to cross CADLC at 12000 and at 210K, then on track 218°.  
Expect RADAR vectors to final approach course.

LANDING RWY 27L/R: From MERFI on track 173° to TMTOM, then on track 096° to cross TUUBR at 12000 and at 210K, then on track 096°.  
Expect RADAR vectors to final approach course.

EC-1, 22 FEB 2024 to 21 MAR 2024

EC-1, 22 FEB 2024 to 21 MAR 2024