

WAAS CH <b>97399</b> <b>W14A</b>	APP CRS <b>139°</b>	Rwy Idg TDZE Apt Elev	<b>5016</b> <b>179</b> <b>179</b>
--	------------------------	-----------------------------	---

# RNAV (GPS) RWY 14

SHREVEPORT DOWNTOWN (DTN)

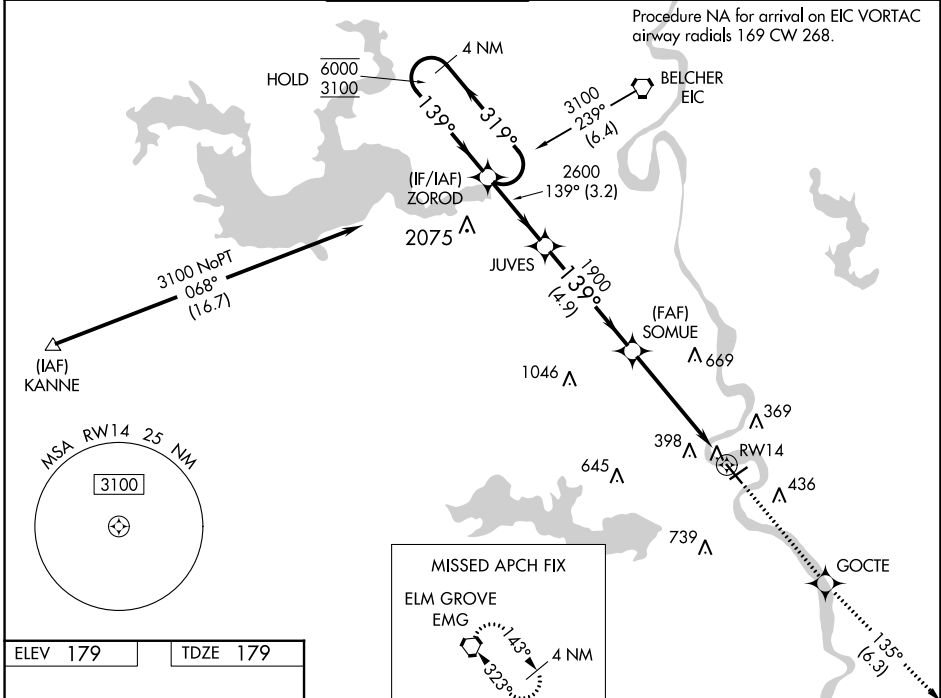
RNP APCH.

**⚠** Circling Rwy 5, 23, 32 NA at night. Rwy 14 helicopter visibility reduction below 3/4 SM NA.  
**⚠** For uncompensated Baro-VNAV systems, LNAV/VNAV NA below -15°C or above 54°C.

**MISSED APPROACH:** Climb to 3000 direct GOCTE and on track 135° to EMG VORTAC and hold.

ASOS <b>118.525</b>	SHREVEPORT APP CON <b>119.9 335.55</b> (153°-319°)	DOWNTOWN TOWER * <b>120.225</b> (CTAF) <b>284.6</b>	GND CON <b>121.65</b>	CLNC DEL <b>121.65</b>	CLNC DEL <b>119.9</b> (When twr closed)	UNICOM <b>122.95</b>
------------------------	---	--	--------------------------	---------------------------	---	-------------------------

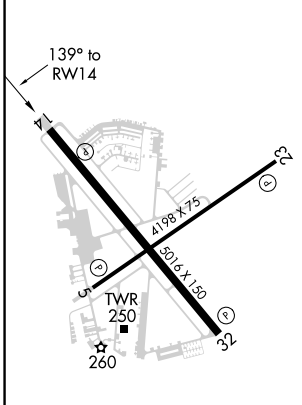
Procedure NA for arrival on EIC VORTAC  
airway radials 169 CW 268.



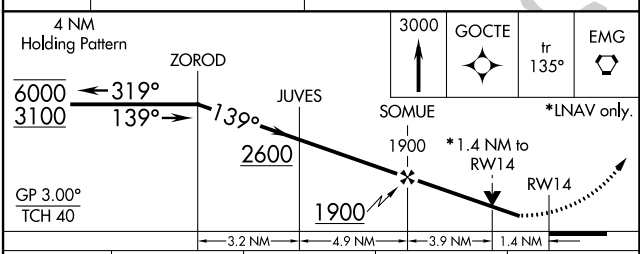
SC-4, 22 FEB 2024 to 21 MAR 2024

SC-4, 22 FEB 2024 to 21 MAR 2024

ELEV 179	TDZE 179
----------	----------



MIRL Rwy 5-23  
HIRL Rwy 14-32  
REIL Rwys 5, 14, 23, and 32



CATEGORY	A	B	C	D
LPV DA		429-3/4	250 (300-3/4)	
LNAV/VNAV DA		510-1	331 (400-1)	
LNAV MDA	680-1	501 (600-1)	680-1 3/8	501 (600-1 3/8)
<b>C</b> CIRCLING	800-1 621 (700-1)	920-1 741 (800-1)	1100-2 3/4 921 (1000-2 3/4)	1100-3 921 (1000-3)