

DEL RIO, TEXAS

ILS or LOC/DME Y RWY 31C

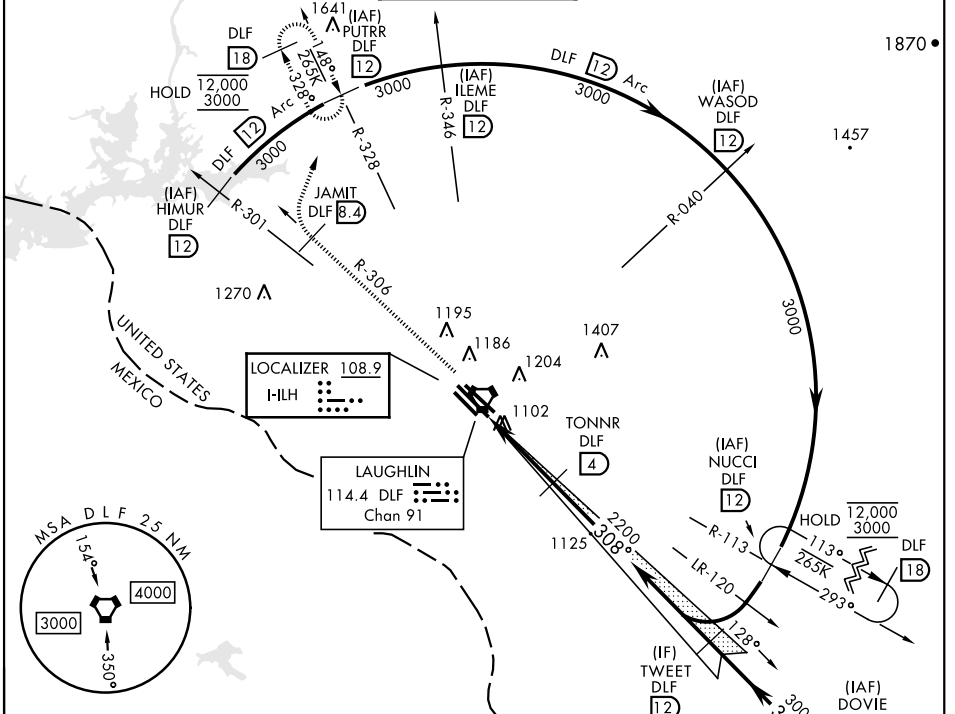
LOC I-ILH 108.9	APCH CRS 308°	Rwy Idg 8852	31C 6282	31L 8316	31R 1078
		TDZE 1079	1080	1078	
		Arprt Elev 1082			

AL-111 [USAF] LAUGHLIN AFB (KDLF)

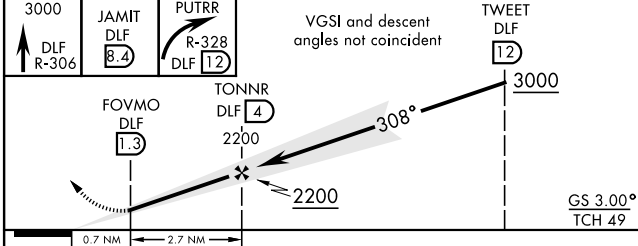
* Circling W of Rwy 13R-31L not authorized.

MISSED APPROACH: Climb to 3000 on DLF VORTAC R-306 to 8.4 DME (JAMIT), then turn right to intercept DLF R-328 to 12 DME (PUTRR) and hold.

ATIS ★ 114.4 269.9	DEL RIO APP CON 119.6 259.1	TOWER ★ 125.2 307.375	GND CON 275.8	CLNC DEL 120.5 335.8
------------------------------	---------------------------------------	---------------------------------	-------------------------	--------------------------------

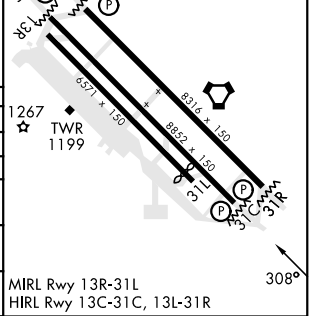


EMERG SAFE ALT 100 NM 16,000



ELEV 1082	TDZE 31C 1079
	TDZE 31L 1080
	TDZE 31R 1078
	Rwy 31L Idg 6282'

CATEGORY	A	B	C	D	E
S-ILS 31C	1279-3/4		200	200-3/4	
S-LOC 31C	1360-1	281 (300-1)	1360-7/8		281 (300-7/8)
SIDESTEP 31L	1360-1	280 (300-1)	1360-1 1/2 280 (300-1 1/2)	1360-2	280 (300-2)
SIDESTEP 31R	1380-1	302 (300-1)	1380-1 1/2 302 (300-1 1/2)	1380-2	302 (300-2)
CIRCLING*	1500-1 418 (500-1)	1540-1 458 (500-1)	1700-1 3/4 618 (700-1 3/4)	1700-2 618 (700-2)	1740-2 1/4 658 (700-2 1/4)



DEL RIO, TEXAS

29°22'N-100°47'W

LAUGHLIN AFB (KDLF)

Amdt 6 05OCT23

ILS or LOC/DME Y RWY 31C

SC-3, 22 FEB 2024 to 21 MAR 2024

SC-3, 22 FEB 2024 to 21 MAR 2024