

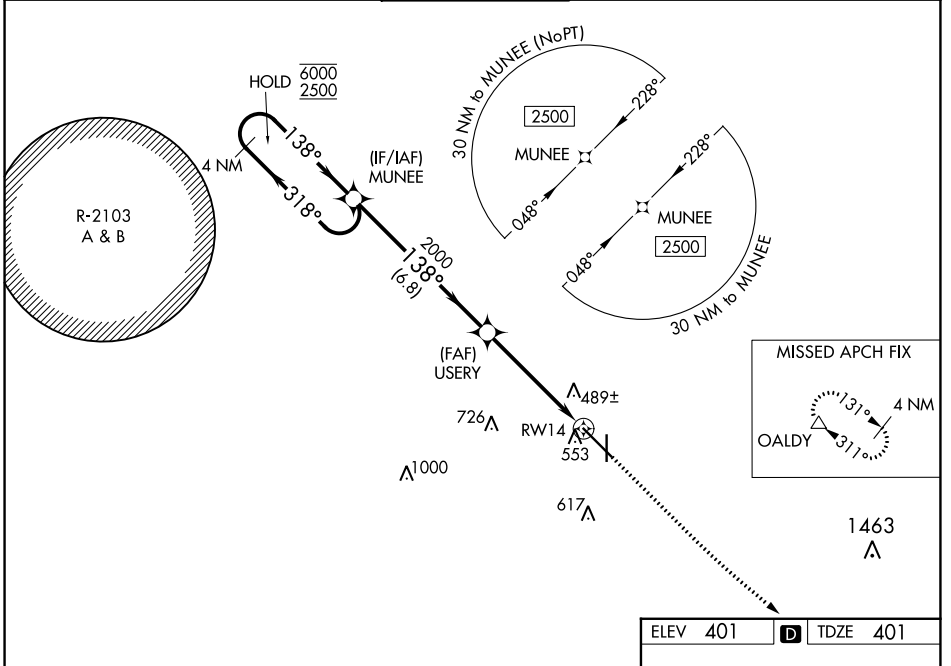
WAAS CH <b>86504</b> <b>W14A</b>	APP CRS <b>138°</b>	Rwy ldg <b>8496</b> TDZE <b>401</b> Apt Elev <b>401</b>
--	------------------------	---

# RNAV (GPS) RWY 14

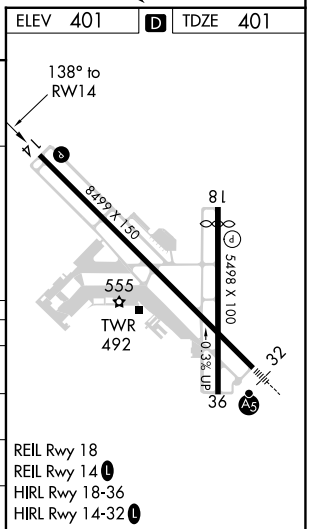
DOTHAN RGNL (DHN)

RNP APCH - GPS.		MISSED APPROACH: Climb to 900 then climbing left turn to 3000 direct OALDY and hold.		
For uncompensated Baro-VNAV systems, LNAV/VNAV NA below -3°C or above 54°C. Intense student helicopter pilot training in vicinity of airport.				

ATIS <b>135.725</b>	CAIRNS APP CON * <b>125.4 327.125</b>	DOTHAN TOWER * <b>118.4 (CTAF) 0 257.6</b>	GND CON <b>121.7 348.6</b>	UNICOM <b>122.95</b>
------------------------	--	---	-------------------------------	-------------------------



4 NM Holding Pattern		VGSIs and RNAV glidepath not coincident (VGSi Angle 3.00/TCH 40).		900	3000	OALDY
MUNEE		USERY		↑	↪	△
6000 ← 318° 2500 → 138°		2000		1.2 NM to RWY 14		
GP 3.00° TCH 54		2000		RWY 14		
6.8 NM		3.7 NM		1.2 NM		
CATEGORY	A	B	C	D		
LPV DA	601-3/4		200 (200-3/4)			
LNAV/VNAV DA	724-1		323 (400-1)			
LNAV MDA	820-1	419 (500-1)	820-1 1/8	419 (500-1 1/8)		
CIRCLING	860-1	459 (500-1)	920-1 1/2	1040-2	639 (700-2)	



SE-4, 22 FEB 2024 to 21 MAR 2024

SE-4, 22 FEB 2024 to 21 MAR 2024