

LOC/DME I-VYIN 111.9 Chan 56	APP CRS 176°	Rwy Idg TDZE Apt Elev	18R 13400 607 607	18L 13401 602 607
--	------------------------	-----------------------------	---	---

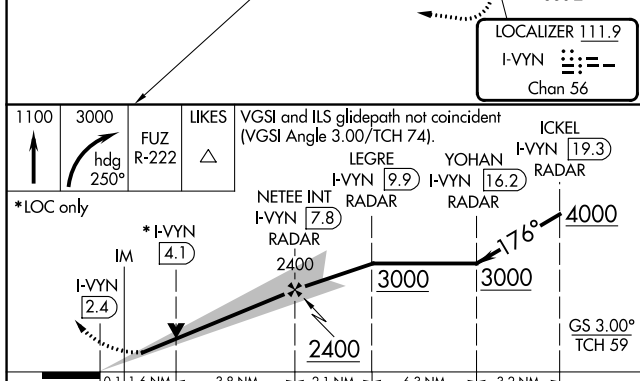
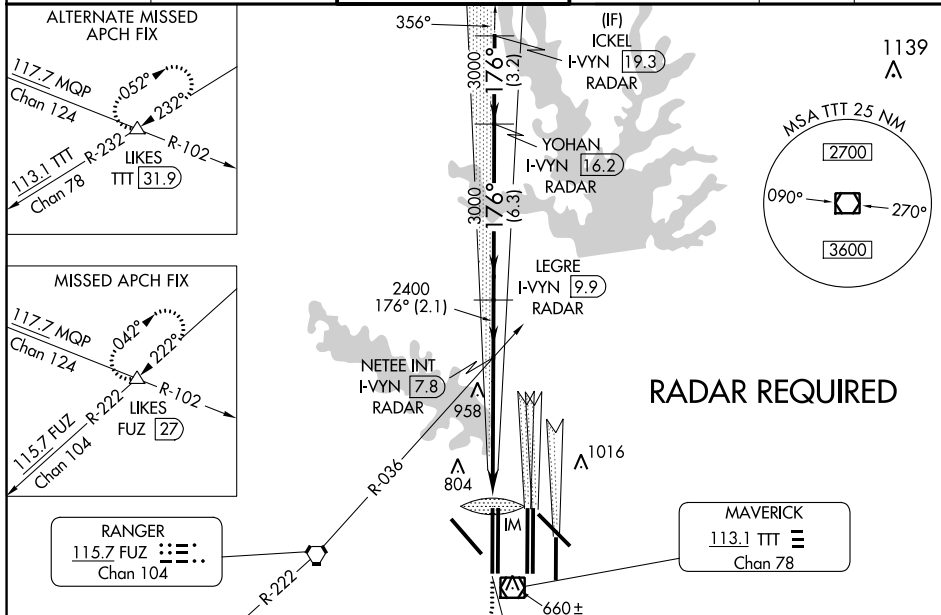
ILS or LOC RWY 18R

DALLAS-FORT WORTH INTL (DFW)

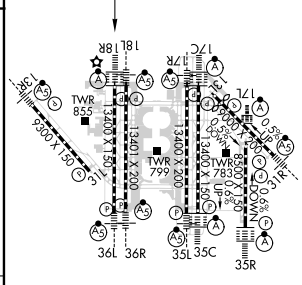
⚠ Inop table does not apply to Sidestep 18L Cats A and B. DME or RADAR required. Simultaneous approach authorized with Rwy 17 L/C/R. For inop ALSF/MALSR, increase S-LOC 18R Cat C/D and Sidestep 18L Cat C visibility to 1/4 mile.

Rwy 18R ALSF-2 	Rwy 18L MALSR 	MISSED APPROACH: Climb to 1100 then climbing right turn to 3000 on heading 250° and FUZ VORTAC R-222 to LIKES INT/FUZ VORTAZ 27 DME and hold.
-----------------------	----------------------	---

D-ATIS ARR 123.775 DEP 135.925	REGIONAL APP CON 118.425	DFW TOWER 126.55 127.5 EAST 124.15 134.9 WEST	GND CON 121.65 121.8 EAST 121.85 WEST	CLNC DEL 128.25	CPDLC
--	------------------------------------	---	--	---------------------------	-------



ELEV 607	D	TDZE 18R 607
		TDZE 18L 602



CATEGORY	A	B	C	D	HIRL all Rwys
S-ILS 18R		807/18	200 (200-1/2)		REIL Rwys 13L and 31L
S-LOC 18R	1220/24	613 (700-1/2)	1220-1 3/8 613 (700-1 3/8)		TDZ/CL all Rwys except 13L and 31L
SIDESTEP 18L	1220/50	618 (700-1)	1220-1 3/8 618 (700-1 3/8)	1220-1 1/2 618 (700-1 1/2)	FAF to MAP 5.5 NM
					Knots 60 90 120 150 180
					Min:Sec 5:30 3:40 2:45 2:12 1:50

SC-2, 22 FEB 2024 to 21 MAR 2024

SC-2, 22 FEB 2024 to 21 MAR 2024