

**TOP ALTITUDE:
FL230**

D-ATIS DEP
134.025
CLNC DEL
118.75
CPDLC
DENVER DEP CON
126.1 360.75



TAKEOFF MINIMUMS

Rwys 7, 26: NA-ATC.

Rwy 8: Standard.

Rwy 16L: Standard with minimum climb of 400' per NM to 5934, then minimum climb of 220' per NM to 14000.

Rwy 16R: Standard with minimum climb of 400' per NM to 5934, then minimum climb of 225' per NM to 14800.

Rwy 17L: Standard with minimum climb of 400' per NM to 5934, then minimum climb of 210' per NM to 15500.

Rwy 17R: Standard with minimum climb of 400' per NM to 5934, then minimum climb of 215' per NM to 14300.

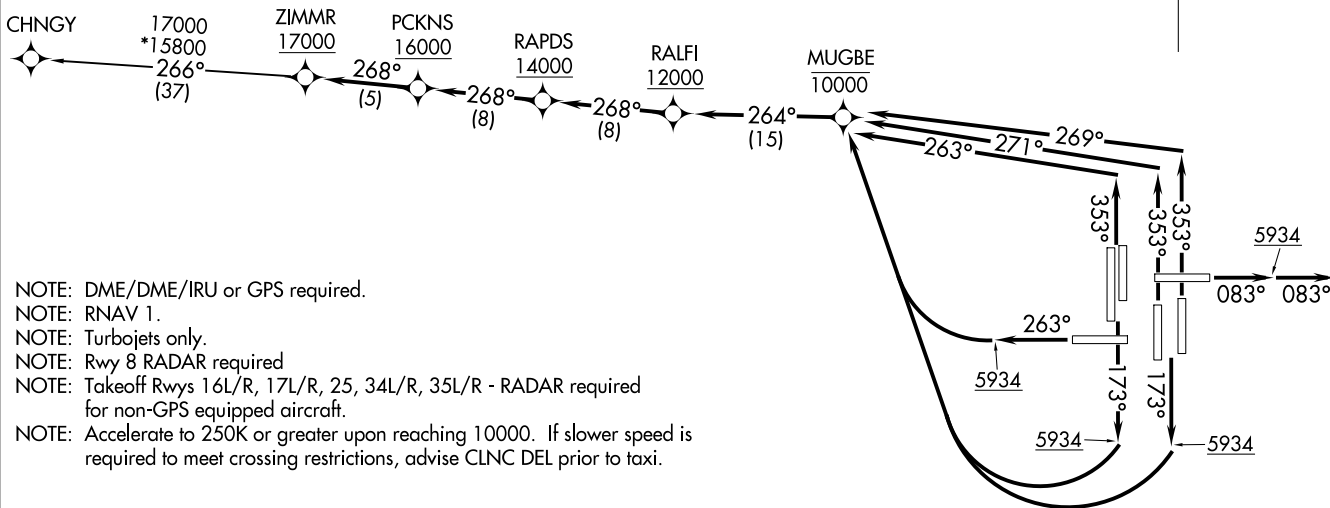
Rwy 25: Standard with minimum climb of 425' per NM to 5934, then minimum climb of 230' per NM to 15700.

Rwy 34L: Standard with minimum climb of 400' per NM to 5934, then minimum climb of 230' per NM to 14600.

Rwy 34R: Standard with minimum climb of 400' per NM to 5934, then minimum climb of 220' per NM to 15700.

Rwy 35L: Standard with minimum climb of 400' per NM to 5934, then minimum climb of 215' per NM to 14000.

Rwy 35R: Standard with minimum climb of 400' per NM to 5934, then minimum climb of 210' per NM to 14500.



NOTE: DME/DME/IRU or GPS required.

NOTE: RNAV 1.

NOTE: Turbojets only.

NOTE: Rwy 8 RADAR required

NOTE: Takeoff Rwys 16L/R, 17L/R, 25, 34L/R, 35L/R - RADAR required

for non-GPS equipped aircraft.

NOTE: Accelerate to 250K or greater upon reaching 10000. If slower speed is required to meet crossing restrictions, advise CLNC DEL prior to taxi.

(NARRATIVE ON FOLLOWING PAGE)

NOTE: Chart not to scale.

ZIMMR THREE DEPARTURE (RNAV)
(ZIMMR3.ZIMMR) 12AUG21

DENVER, COLORADO
DENVER INTL (DEN)

(ZIMMR3.ZIMMR) 21224
ZIMMR THREE DEPARTURE (RNAV)

AL-9077 (FAA)

DENVER INTL (DEN)
DENVER, COLORADO



DEPARTURE ROUTE DESCRIPTION
SEE ADDITIONAL REQUIREMENTS ON AAUP

TAKEOFF RUNWAY 8: Climb on heading 083° to 5934, then on heading 083° or as assigned by ATC, expect vectors to cross RALFI at or above 12000, thence. . .

TAKEOFF RUNWAYS 16L/R, 17L/R: Climb on heading 173° to 5934, then right turn direct MUGBE at or below 10000, then on track 264° to cross RALFI at or above 12000, thence. . .

TAKEOFF RUNWAY 25: Climb on heading 263° to 5934, then right turn direct MUGBE at or below 10000, then on track 264° to cross RALFI at or above 12000, thence. . .

TAKEOFF RUNWAYS 34L/R: Climb on heading 353° to intercept course 263° to cross MUGBE at or below 10000, then on track 264° to cross RALFI at or above 12000, thence. . .

TAKEOFF RUNWAY 35L: Climb on heading 353° to intercept course 271° to cross MUGBE at or below 10000, then on track 264° to cross RALFI at or above 12000, thence. . .

TAKEOFF RUNWAY 35R: Climb on heading 353° to intercept course 269° to cross MUGBE at or below 10000, then on track 264° to cross RALFI at or above 12000, thence. . .

. . . on track 268° to cross RAPDS at or above 14000, then on track 268° to cross PCKNS at or above 16000, then on track 268° to cross ZIMMR at or above 17000. Then on (transition), maintain FL230 or filed lower altitude. Expect higher filed altitude ten minutes after departure.

CHNGY TRANSITION (ZIMMR3.CHNGY)

SW-1, 22 FEB 2024 to 21 MAR 2024

SW-1, 22 FEB 2024 to 21 MAR 2024