

WAAS CH 56234 W18A	APP CRS 184°	Rwy Idg 3800 TDZE 835 Apt Elev 835
--	------------------------	---

RNAV (GPS) RWY 18

DUPONT/LAPEER (D95)

⚠ DME/DME RNP-0.3 NA. Helicopter visibility reduction below ¾ SM NA. When local altimeter setting not received, use Flint altimeter setting and increase all MDAs 60 feet and increase LP Cat C visibility ½ mile, LNAV Cat C and Circling Cat C visibility ¼ mile. Circling NA to Rwy 9 and 27.

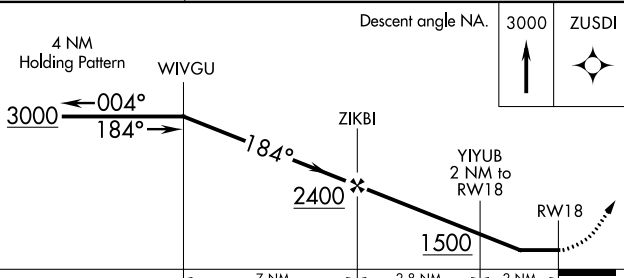
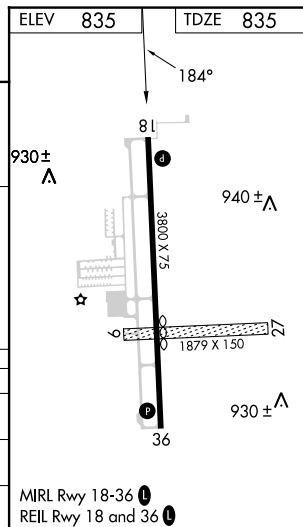
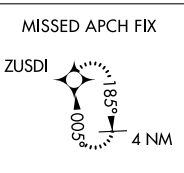
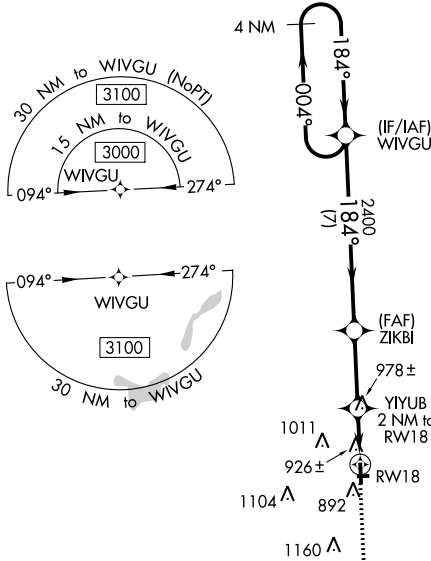
MISSED APPROACH:
Climb to 3000 direct ZUSDI and hold.

AWOS-3P
134.050

GREAT LAKES APP CON ★
118.8 257.9

UNICOM
123.0 (CTAF) ①

△ 2013



CATEGORY	A	B	C	D
LP MDA	1180-1 345 (400-1)			NA
LNAV MDA	1240-1	405 (500-1)	1240-1½ 405 (500-1½)	NA
C CIRCLING	1300-1 465 (500-1)	1380-1 545 (600-1)	1460-1¾ 625 (700-1¾)	NA

MIRL Rwy 18-36 ①
REIL Rwy 18 and 36 ①

EC-1, 22 FEB 2024 to 21 MAR 2024

EC-1, 22 FEB 2024 to 21 MAR 2024