

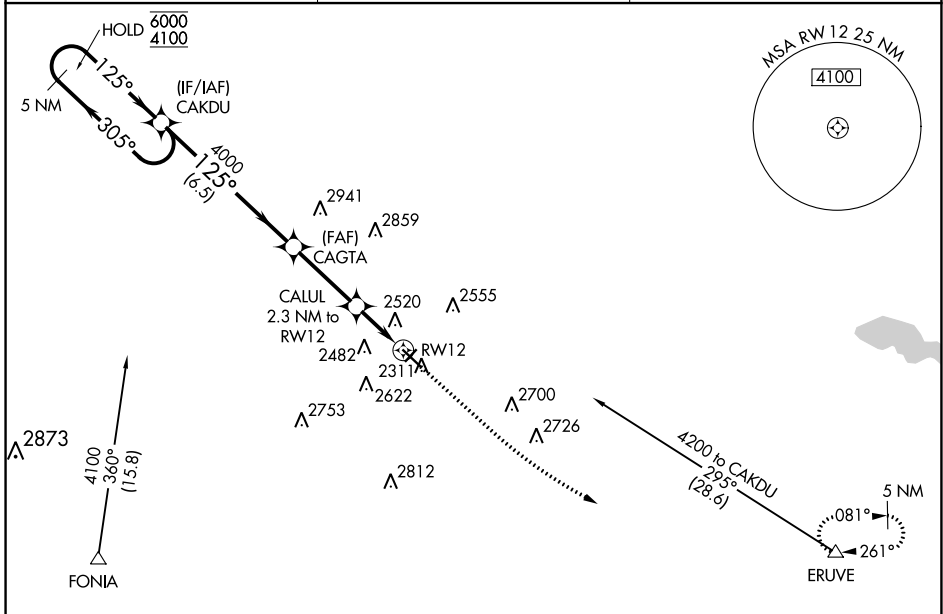
WAAS CH <b>82139</b> <b>W12A</b>	APP CRS <b>125°</b>	Rwy Idg TDZE Apt Elev	<b>5102</b> <b>2253</b> <b>2271</b>
--	------------------------	-----------------------------	---

# RNAV (GPS) RWY 12

TIOGA MUNI (D60)

RNP APCH.	<p>▼ Circling NA to Rwys 3 and 21. For uncompensated Baro-VNAV systems, procedure NA below -19°C or above 54°C. When local altimeter setting not received, procedure NA.</p> <p>▲ MISSED APPROACH: Climb to 2720 then climbing left turn to 5000 direct ERUVE and hold.</p>
-----------	---

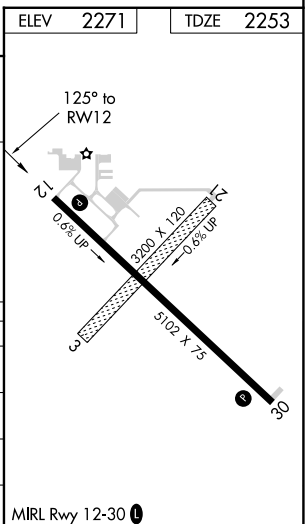
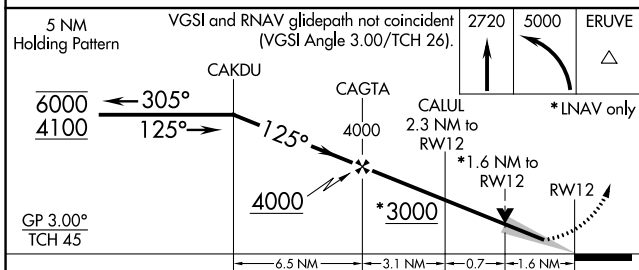
AWOS-3 <b>118.575</b>	MINNEAPOLIS CENTER <b>127.6 279.6</b>	CTAF <b>122.9</b>
--------------------------	--	----------------------



NC-1, 22 FEB 2024 to 21 MAR 2024

NC-1, 22 FEB 2024 to 21 MAR 2024

ELEV	2271	TDZE	2253
------	------	------	------



CATEGORY	A	B	C	D
LPV DA	2503-1		250 (300-1)	
LNAV/VNAV DA	2819-2		566 (600-2)	
LNAV MDA	2780-1 527 (600-1)		2780-1½ 527 (600-1½)	
CIRCLING	2820-1 549 (600-1)	2980-1 709 (800-1)	2980-2 709 (800-2)	3000-2¼ 729 (800-2¼)

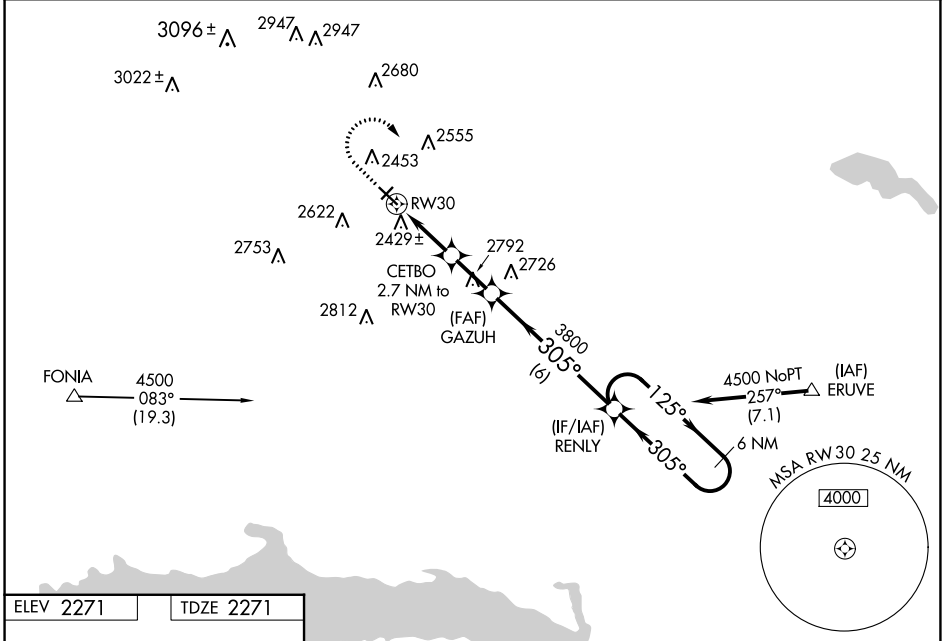
WAAS CH <b>56630</b> <b>W30A</b>	APP CRS <b>305°</b>	Rwy Idg TDZE Apt Elev	<b>5102</b> <b>2271</b> <b>2271</b>
--	------------------------	-----------------------------	---

# RNAV (GPS) RWY 30

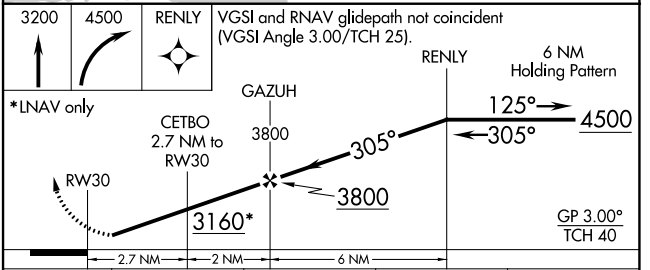
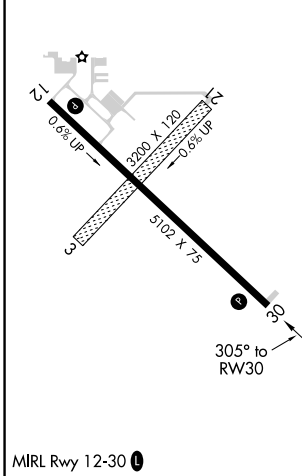
TIOGA MUNI (D60)

RNP APCH.	MISSED APPROACH: Climb to 3200 then climbing right turn to 4500 direct RENLY and hold.
<p><b>▽</b> For uncompensated Baro-VNAV systems, LNAV/VNAV NA below -19°C or above 54°C.  <b>△</b> Rwy 30 helicopter visibility reduction below 3/4 SM NA. Circling NA to Rws 3 and 21.</p>	

AWOS-3 <b>118.575</b>	MINNEAPOLIS CENTER <b>127.6 279.6</b>	CTAF <b>122.9</b>
--------------------------	--	----------------------



ELEV 2271	TDZE 2271
-----------	-----------



CATEGORY	A	B	C	D
LPV DA	2521-1 250 (300-1)			
LNAV/VNAV DA	2712-1 3/8 441 (500-1 3/8)			
LNAV MDA	2720-1 449 (500-1)		2720-1 3/8 449 (500-1 3/8)	
<b>C</b> CIRCLING	2820-1 549 (600-1)	2980-1 709 (800-1)	2980-2 709 (800-2)	3000-2 1/4 729 (800-2 1/4)

NC-1, 22 FEB 2024 to 21 MAR 2024

NC-1, 22 FEB 2024 to 21 MAR 2024