

RNAV (GPS) RWY 30

CROSBY MUNI (D50)

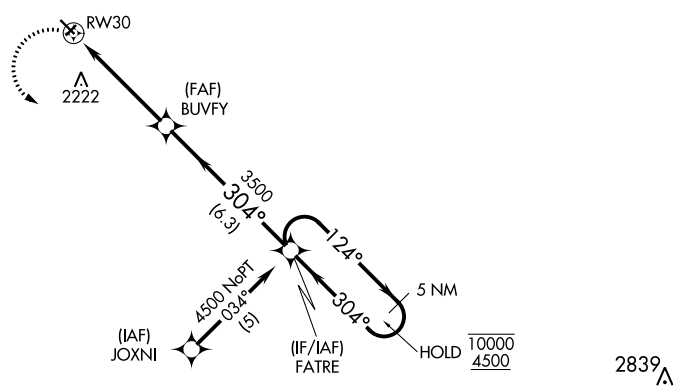
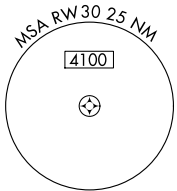
APP CRS	Rwy Idg	3800
304°	TDZE	1948
	Apt Elev	1950

RNP APCH

▼ Circling NA to Rwsy 3 and 21. Circling Rwy 12 NA at night.
 ▲ Rwy 30 helicopter visibility reduction below 1 SM NA.

MISSED APPROACH: Climbing left turn to 4500 direct FATRE and hold.

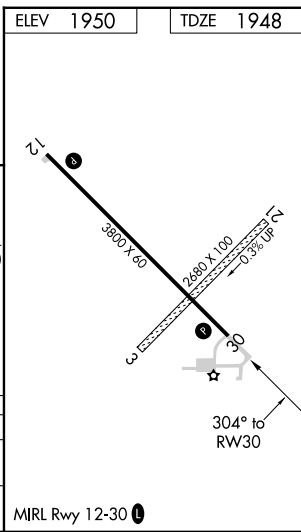
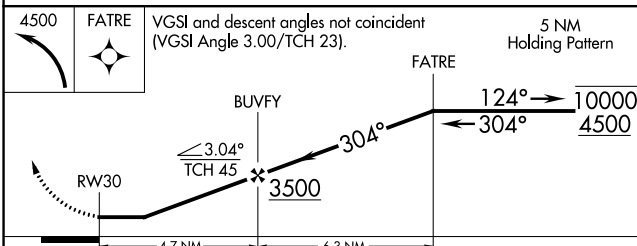
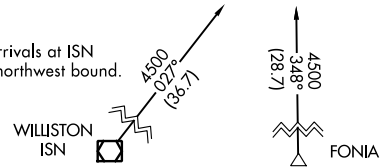
AWOS-3 118.025	SALT LAKE CITY CENTER 126.85 305.2	CTAF 122.9 0
--------------------------	--	------------------------



NC-1, 22 FEB 2024 to 21 MAR 2024

NC-1, 22 FEB 2024 to 21 MAR 2024

Procedure NA for arrivals at ISN VOR/DME on V71 northwest bound.



CATEGORY	A	B	C	D
LNVA MDA	2560-1	612 (700-1)	2560-1 ³ / ₄ 612 (700-1 ³ / ₄)	2560-2 612 (700-2)
◻ CIRCLING	2560-1	610 (700-1)	2560-1 ³ / ₄ 610 (700-1 ³ / ₄)	2640-2 ¹ / ₄ 690 (700-2 ¹ / ₄)