

CLOVIS, NEW MEXICO

RNAV (GPS) RWY 31

APCH CRS 308°
Rwy Idg 8196
TDZE 4270
Arprt Elev 4295

- (USAF)

CANNON AFB (KCVS)

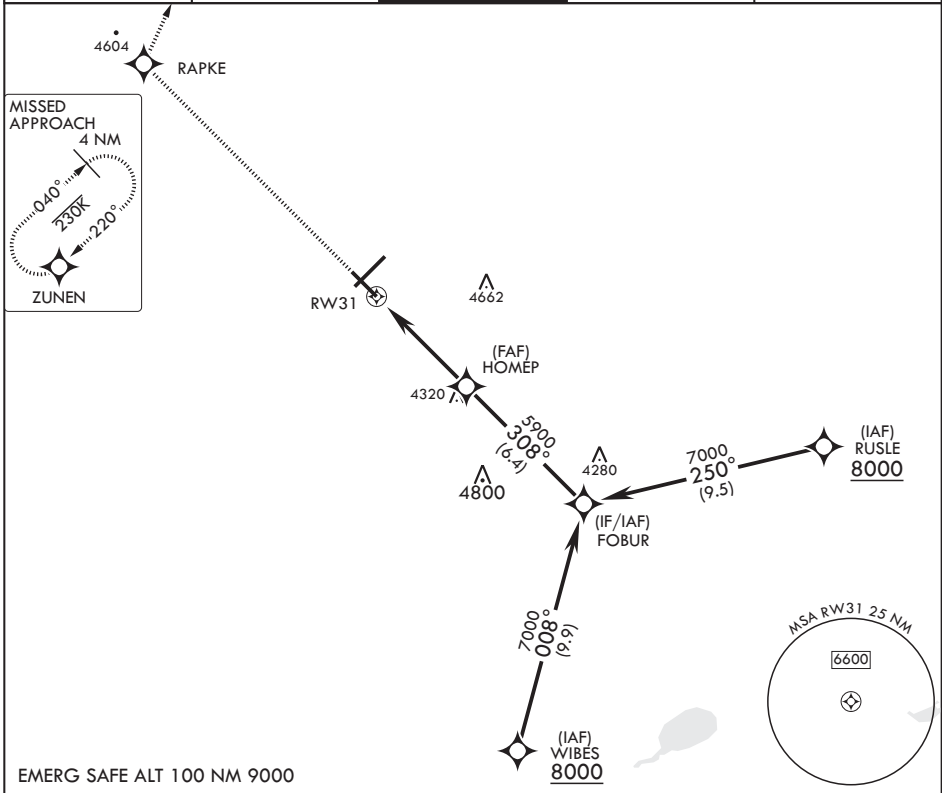
RNP APCH



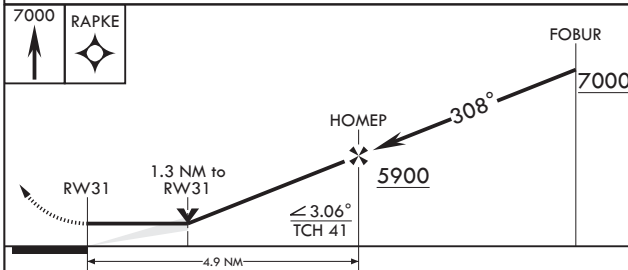
MISSED APPROACH: Climb to 7000 direct RAPKE, then turn right to ZUNEN and hold.

* When ALS inop, increase CAT AB vis to 1 mile, CAT CDE vis to 1 3/8 miles.

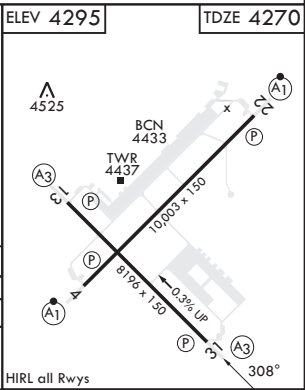
ATIS 119.1 269.9	CANNON APP CON 118.425 352.1	TOWER 120.4 270.25	GND CON 121.9 275.8	CLNC DEL 120.2 293.225
---------------------	---------------------------------	-----------------------	------------------------	---------------------------



EMERG SAFE ALT 100 NM 9000



CATEGORY	A	B	C	D	E
LNVA MDA*	4720-1/2	450 (500-1/2)	4720-7/8	450	(500-7/8)
CIRCLING	4840-1	545 (600-1)	4860-1 1/2	5000-2 1/4	5020-2 1/2
			565 (600-1 1/2)	705 (800-2 1/4)	725 (800-2 1/2)



CLOVIS, NEW MEXICO

34°23'N - 103°19'W

CANNON AFB (KCVS)

Amdt 5 28DEC23

RNAV (GPS) RWY 31

SW-1, 22 FEB 2024 to 21 MAR 2024

SW-1, 22 FEB 2024 to 21 MAR 2024