

LOC/DME I-VAC <b>110.75</b> Chan <b>44 (Y)</b>	APP CRS <b>006°</b>	Rwy Idg TDZE Apt Elev <b>8000</b> <b>873</b> <b>896</b>
--	------------------------	--

# ILS RWY 36L (CAT II)

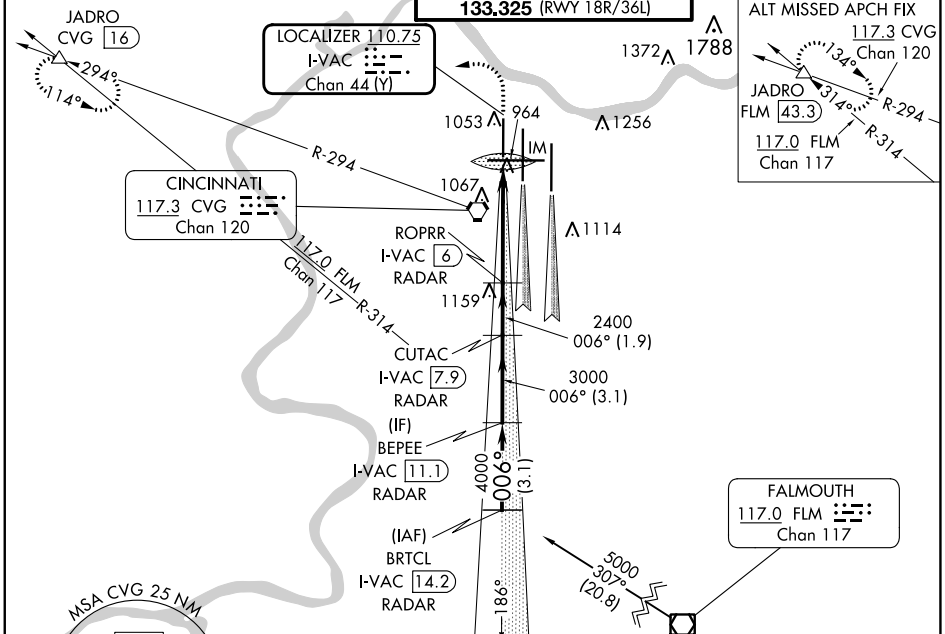
CINCINNATI/NORTHERN KENTUCKY INTL (CVG)

**Simultaneous approach authorized with Rwy 36C and 36R. DME required.**

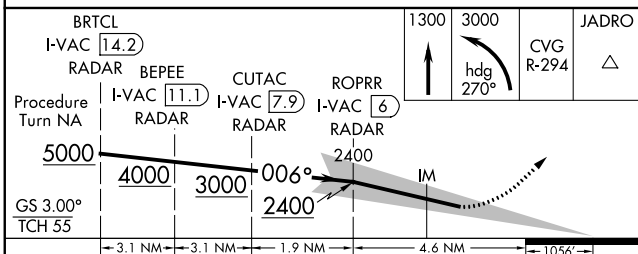
**ALSIF-2**

**MISSED APPROACH:** Climb to 1300 then climbing left turn to 3000 via heading 270° and CVG R-294 to JADRO/CVG 16 DME and hold.

D-ATIS ARR <b>134.375</b> DEP <b>135.3</b>	CINCINNATI APP CON <b>119.7 363.15</b> (090°-269°) <b>123.875 363.15</b> (270°-089°)	CINCINNATI TOWER <b>118.975 360.85</b> (RWY 18L/36R) <b>118.3</b> (RWYS 18C/36C, 09/27) <b>133.325</b> (RWY 18R/36L)	GND CON <b>121.7</b>	CLNC DEL <b>127.175</b>	CPDLC
---	--	---	-------------------------	----------------------------	-------



## DME or RADAR REQUIRED



CATEGORY	S-ILS-36L			
RA	98/12	100	DA	973

## CATEGORY II ILS - SPECIAL AIRCREW & AIRCRAFT CERTIFICATION REQUIRED

**ALT MISSED APCH FIX**

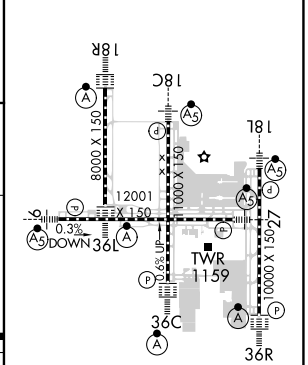
**117.3 CVG** Chan 120

**JADRO** FLN **43.3**

**117.0 FLM** Chan 117

**FALMOUTH** **117.0 FLM** Chan 117

ELEV **896** TDZE **873**



HIRL all Rwys  
TDZ/CL all Rwys except 27

SE-1, 22 FEB 2024 to 21 MAR 2024

SE-1, 22 FEB 2024 to 21 MAR 2024