

WAAS CH 60907 W35A	APP CRS 348°	Rwy ldg 5503 TDZE 1140 Apt Elev 1165
--	------------------------	---

RNAV (GPS) RWY 35

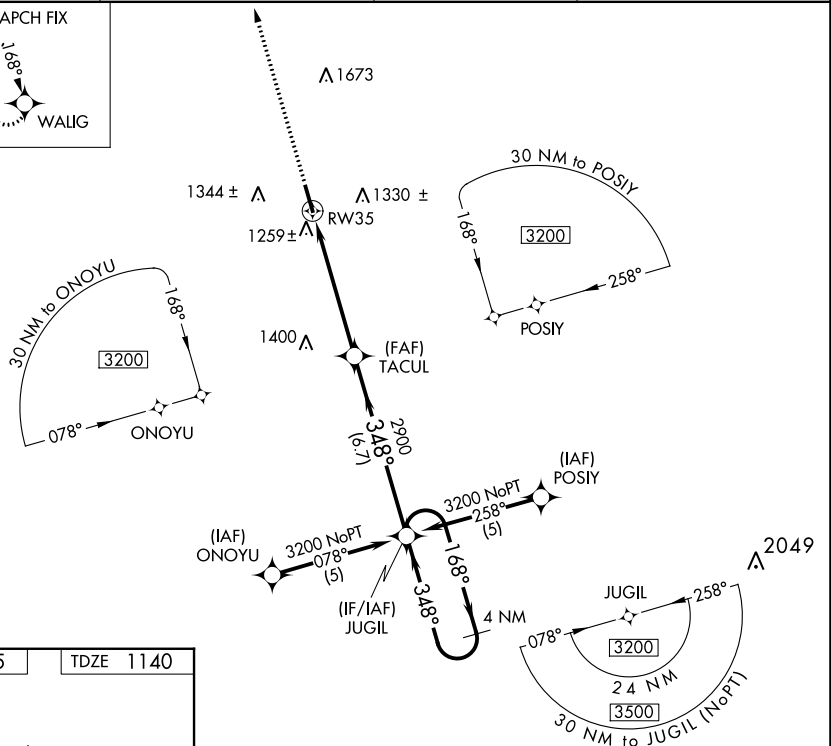
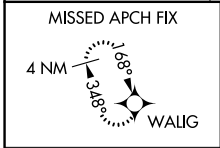
WEST GEORGIA RGNL-O V GRAY FLD (CTJ)

RNP APCH-GPS.

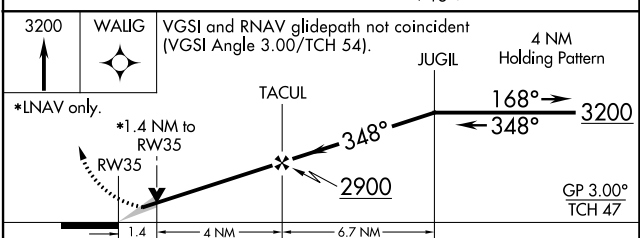
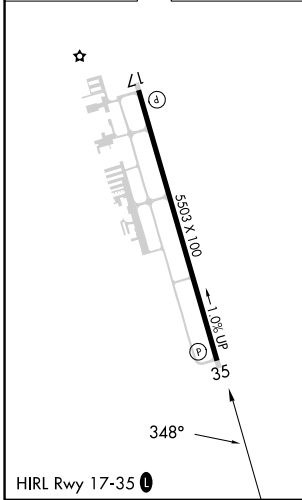
▼ When local altimeter setting not received, use Newnan Coweta County altimeter setting and increase DA to 1480 feet and all visibilities ¼ SM; increase all MDAs 100 feet and visibility Cat C ½ SM and Cat D ¼ SM. VDP NA when using Newnan Coweta County altimeter setting.

MISSED APPROACH:
Climb to 3200 direct
WALIG and hold.

AWOS-3 118.175	ATLANTA APP CON 121.0 268.7	CLNC DEL 121.6	UNICOM 122.975 (CTAF) 0
--------------------------	---------------------------------------	--------------------------	-----------------------------------



ELEV 1165	TDZE 1140
-----------	-----------



CATEGORY	A	B	C	D
LPV DA	1390-1 250 (300-1)			
LNAV/ VNAV DA	NA			
LNAV MDA	1580-1	440 (500-1)	1580-1¼ 440 (500-1¼)	1580-1½ 440 (500-1½)
CIRCLING	1660-1 495 (500-1)	1700-1 535 (600-1)	1880-2 715 (800-2)	2000-2¾ 835 (900-2¾)

SE-4, 22 FEB 2024 to 21 MAR 2024

SE-4, 22 FEB 2024 to 21 MAR 2024