

WAAS CH <b>86737</b> <b>W05A</b>	APP CRS <b>051°</b>	Rwy Idg TDZE Apt Elev	<b>5300</b> <b>3854</b> <b>3858</b>
--	------------------------	-----------------------------	---

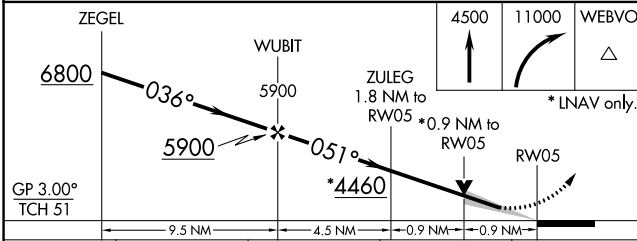
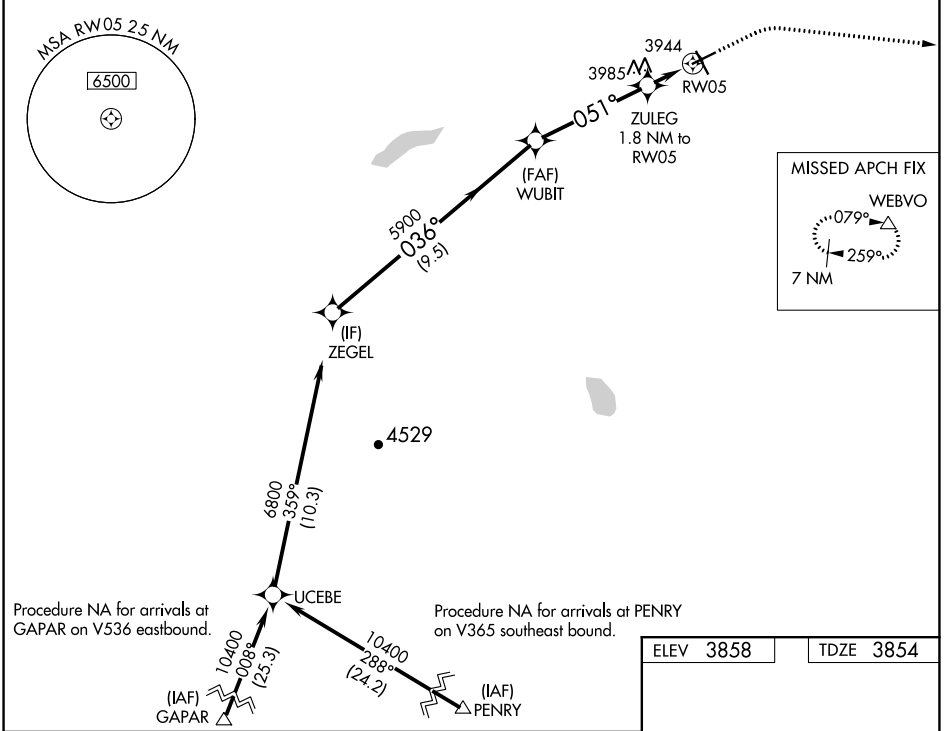
# RNAV (GPS) RWY 5

CUT BANK INTL (CTB)

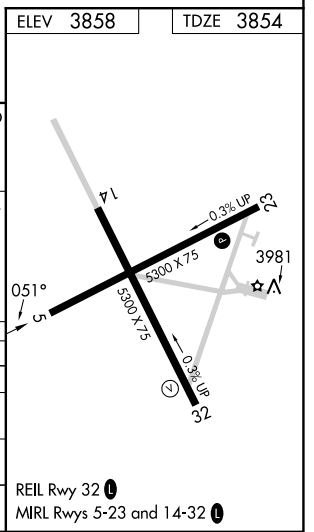
**⚠** For uncompensated Baro-VNAV systems, LNAV/VNAV NA below -25°C (-13°F) or above 51°C (124°F).  
**❄** -29°C  
 DME/DME RNP-0.3 NA.

MISSED APPROACH: Climb to 4500 then climbing right turn to 11000 direct WEBVO and hold.

ASOS <b>119.025</b>	SALT LAKE CITY CENTER <b>133.4 285.4</b>	UNICOM <b>123.0 (CTAF) 0</b>
------------------------	---	---------------------------------



CATEGORY	A	B	C	D
LPV DA		4054-1	200 (200-1)	
LNAV/VNAV DA		4104-1	250 (300-1)	
LNAV MDA		4200-1	346 (400-1)	
<b>C</b> CIRCLING	4280-1 422 (500-1)	4320-1 462 (500-1)	4400-1½ 542 (600-½)	4620-2½ 762 (800-2½)



NW-1, 22 FEB 2024 to 21 MAR 2024

NW-1, 22 FEB 2024 to 21 MAR 2024