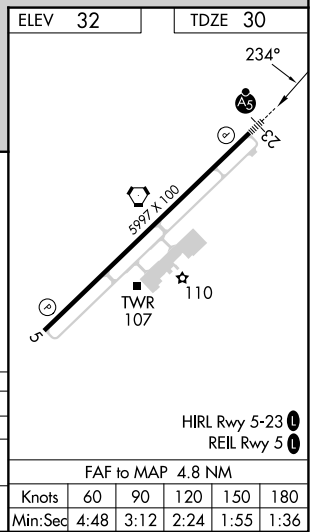
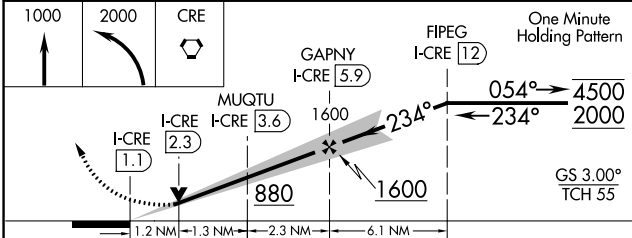
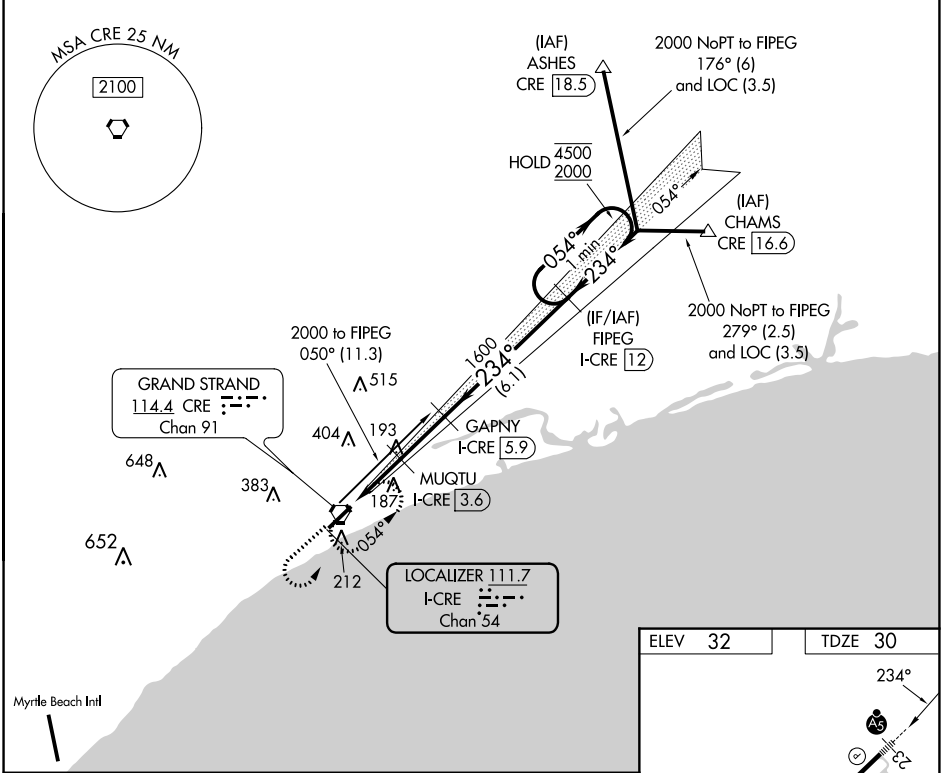


LOC/DME I-CRE 111.7 Chan 54	APP CRS 234°	Rwy Idg TDZE 30 Apt Elev 32	5997
---	------------------------	---	-------------

ILS or LOC RWY 23

GRAND STRAND (CRE)

DME required.		MALSR		MISSED APPROACH: Climb to 1000 then climbing left turn to 2000 direct CRE VORTAC and hold, continue climb-in-hold to 2000.	
Rwy 23 helicopter visibility reduction below 3/4 SM NA. For inop ALS, increase S-LOC 23 Cat A/B visibility to 1 SM.					
ATIS 119.625	MYRTLE BEACH APP CON * 119.2 350.3	STRAND TOWER * 124.6 (CTAF) 0 257.6	GND CON 121.8 257.6	CLNC DEL 121.8	UNICOM 122.95



CATEGORY	A	B	C	D
S-ILS 23		230-1/2	200 (200-1/2)	
S-LOC 23		460-3/4	430 (500-3/4)	
CIRCLING	520-1 488 (500-1)		720-2 688 (700-2)	720-2 1/4 688 (700-2 1/4)

SE-2, 22 FEB 2024 to 21 MAR 2024

SE-2, 22 FEB 2024 to 21 MAR 2024

ELEV 32		TDZE 30	
FAF to MAP 4.8 NM			
Knots	60	90	120 150 180
Min:Sec	4:48	3:12	2:24 1:55 1:36