

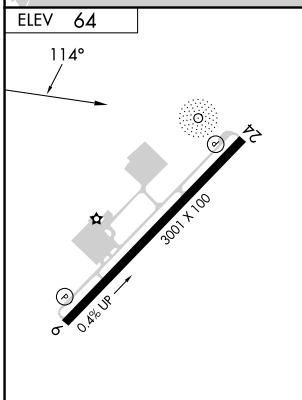
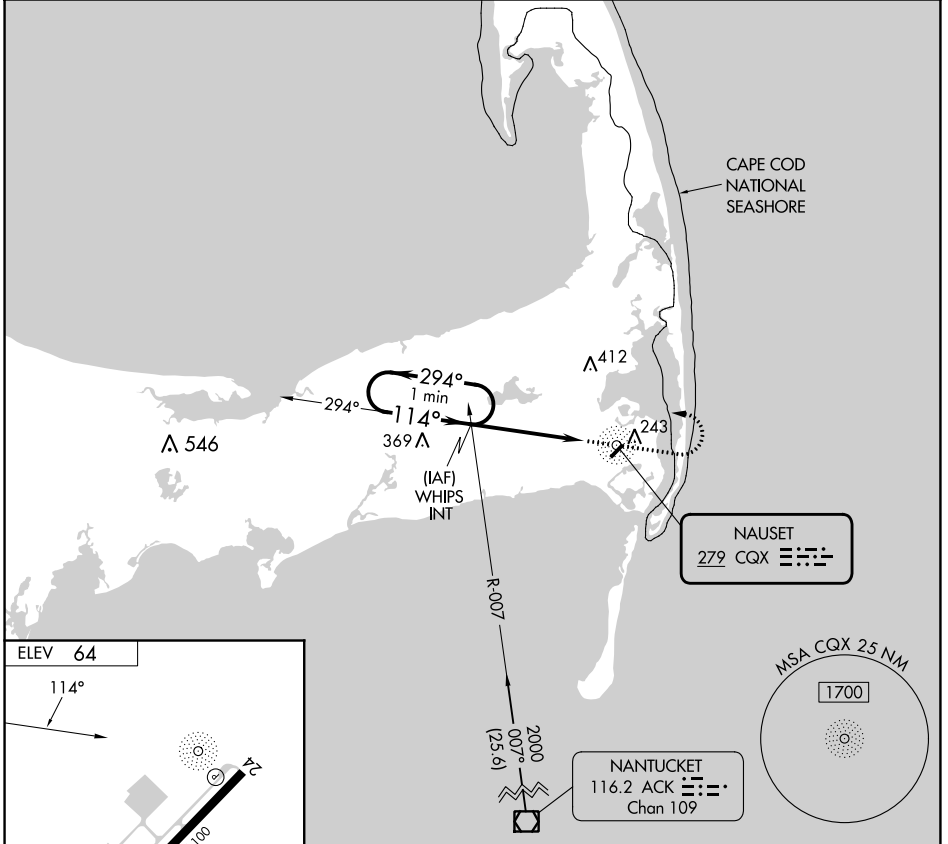
NDB CQX <b>279</b>	APP CRS <b>114°</b>	Rwy Idg TDZE Apt Elev	<b>N/A</b> <b>N/A</b> <b>64</b>
-----------------------	------------------------	--------------------------	---------------------------------------

**NDB-A**  
CHATHAM MUNI (CQX)

**⚠** When local altimeter setting not received, use Hyannis altimeter setting and increase all MDA 40 feet and Circling visibility Cat D ¼ SM.  
**⚠ NA** When VGSJ inop, procedure NA at night. Helicopter visibility reduction below 1 SM NA.

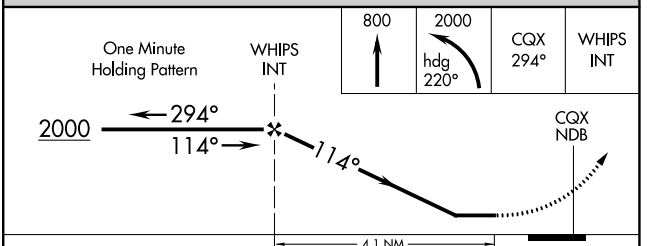
**MISSED APPROACH:** Climb to 800 then climbing left turn to 2000 heading 220° and 294° bearing from CQX NDB to WHIPS INT and hold.

ASOS <b>135.875</b>	BOSTON APP CON * <b>118.2</b>	CLNC DEL <b>127.3</b>	UNICOM <b>122.8</b> (CTAF)	<b>122.95</b> <b>0</b>
------------------------	----------------------------------	--------------------------	-------------------------------	------------------------



MIRL Rwy 6-24 **0**  
REL Rws 6 and 24

FAF to MAP 4.1 NM					
Knots	60	90	120	150	180
Min:Sec	4:06	2:44	2:03	1:38	1:22



CATEGORY	A	B	C	D
CIRCLING	600-1½	536 (600-1½)	680-1¾ 616 (700-1¾)	780-2¼ 716 (800-2¼)

NE-1, 22 FEB 2024 to 21 MAR 2024

NE-1, 22 FEB 2024 to 21 MAR 2024