

# NDB RWY 35L

CITY OF COLORADO SPRINGS MUNI (COS)

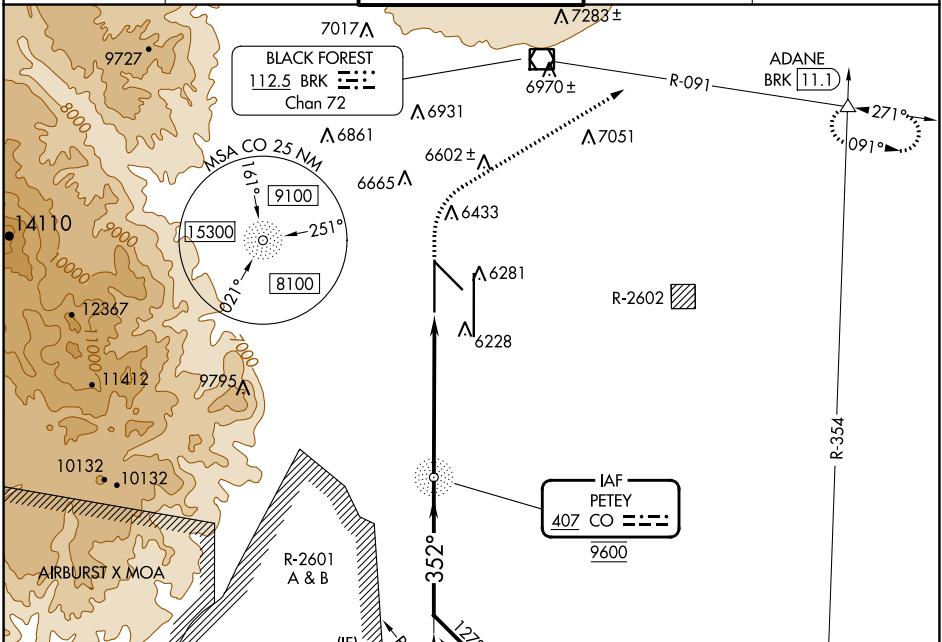
CO NDB <b>407</b>	APP CRS <b>352°</b>	Rwy ldg TDZE Apt Elev	<b>11022</b> <b>6075</b> <b>6187</b>
----------------------	------------------------	-----------------------------	--

**▼** RADAR monitoring required when R-2601 in use.  
**▲** For inop ALS, increase S-35L Cat A/B visibility RVR 5500, and Cat C/D to 1½ SM.

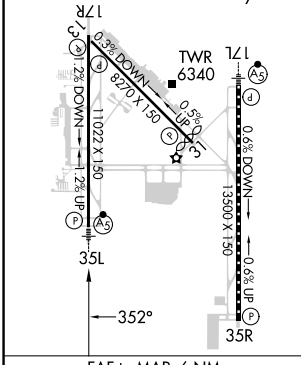


**MISSED APPROACH:** Climb to 6700 then climbing right turn to 9000 on heading 051° and on BRK VOR/DME R-091 to ADANE INT/BRK 11.1 DME and hold.

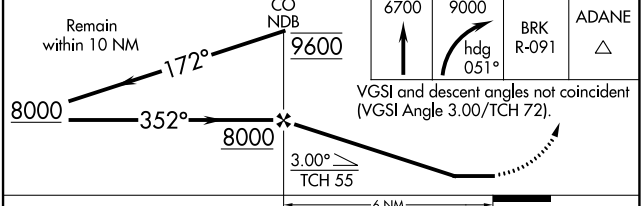
ATIS <b>125.0 254.3</b>	SPRINGS APP CON <b>124.0 257.875</b>	SPRINGS TOWER <b>119.9 360.6</b>	GND CON <b>121.7 348.6</b>	CLNC DEL <b>134.45 363.125</b>
----------------------------	---	-------------------------------------	-------------------------------	-----------------------------------



ELEV 6187 **D** TDZE 6075  
 HIRL Rwy 17R-35L and 17L-35R  
 REIL Rwy 13, 17R, 31 and 35R  
 TDZ/CL Rwy 17L and 35R  
 MIRL Rwy 13-31



Procedure NA for arrival on PUB VORTAC airway radials 267 CW 354.  
 MIDAY INT PUB 21.4  
 CO NDB 9600  
 BRK R-091  
 ADANE



FAF to MAP 6 NM

Knots	60	90	120	150	180
Min:Sec	6:00	4:00	3:00	2:24	2:00

CATEGORY	A	B	C	D
S-35L	6540/40	465 (400-¾)	6540/50	465 (400-1)
<b>C</b> CIRCLING	6740-1 553 (600-1)	6760-1 573 (600-1)	6980-2¼ 793 (800-2¼)	7240-3 1053 (1100-3)

# NDB RWY 35L

SW-1, 22 FEB 2024 to 21 MAR 2024

SW-1, 22 FEB 2024 to 21 MAR 2024