

CHARLOTTE APP CON  
125.35 257.2  
CLT D-ATIS ARR  
121.15

NOTE: RADAR required.  
NOTE: VXV transition for turbojet aircraft only.  
NOTE: HMV and SOT transitions for turboprop/prop aircraft only.

(JALIT.LINN3) 22307  
LINN THREE ARRIVAL

AL-78 (FAA)

CHARLOTTE, NORTH CAROLINA

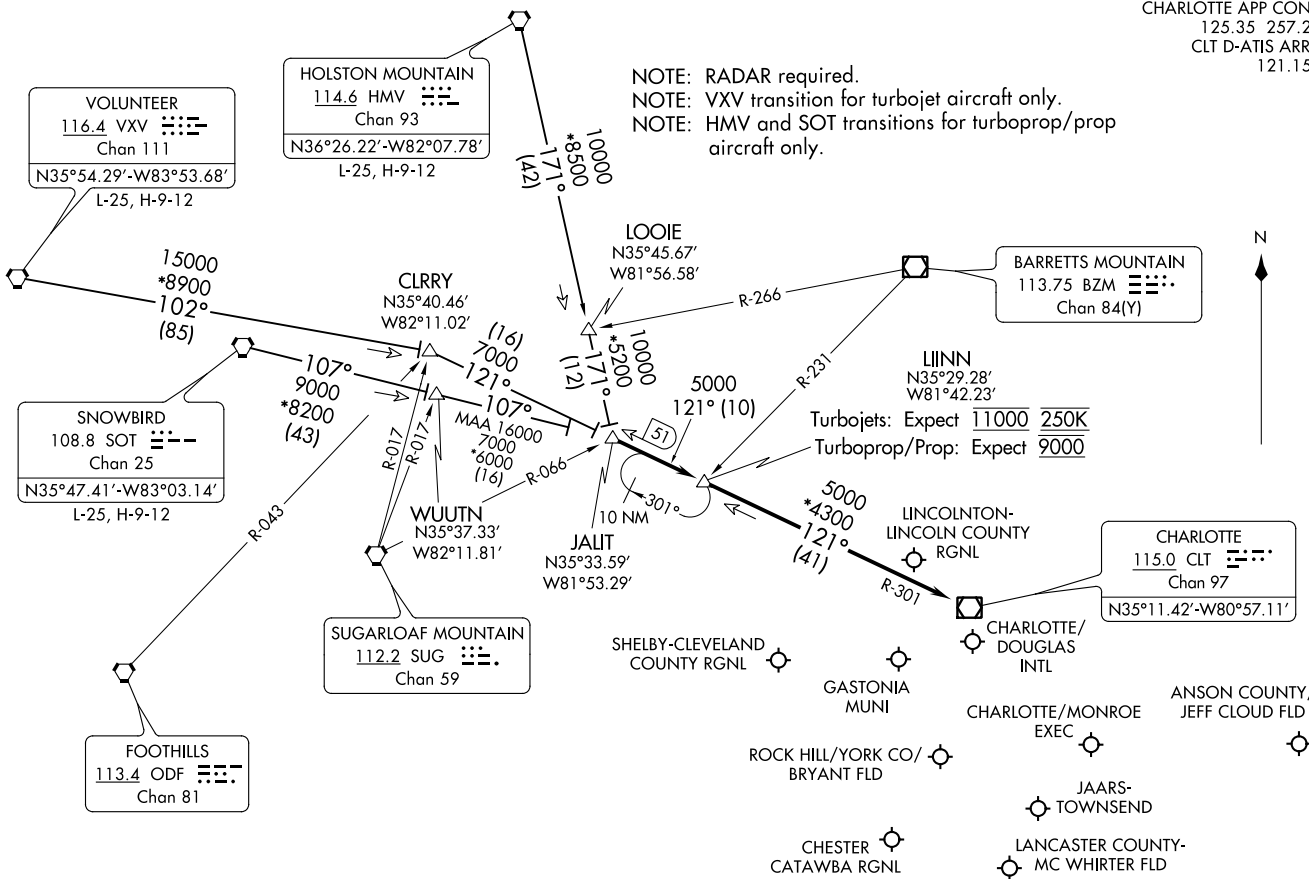


(NARRATIVE ON FOLLOWING PAGE)

NOTE: Chart not to scale.

LINN THREE ARRIVAL  
(JALIT.LINN3) 08NOV18

CHARLOTTE, NORTH CAROLINA



VOLUNTEER  
116.4 VXV  
Chan 111  
N35°54.29'-W83°53.68'  
L-25, H-9-12

HOLSTON MOUNTAIN  
114.6 HMV  
Chan 93  
N36°26.22'-W82°07.78'  
L-25, H-9-12

SNOWBIRD  
108.8 SOT  
Chan 25  
N35°47.41'-W83°03.14'  
L-25, H-9-12

SUGARLOAF MOUNTAIN  
112.2 SUG  
Chan 59

BARRETTS MOUNTAIN  
113.75 BZM  
Chan 84(Y)

LINN  
N35°29.28'  
W81°42.23'  
Turbojets: Expect 11000 250K  
Turboprop/Prop: Expect 9000

CHARLOTTE  
115.0 CLT  
Chan 97  
N35°11.42'-W80°57.11'

ARRIVAL ROUTE DESCRIPTION

HOLSTON MOUNTAIN TRANSITION (HMV.LIINN3): From over HMV VORTAC on HMV R-171 to JALIT. Thence . . . .

SNOWBIRD TRANSITION (SOT.LIINN3): From over SOT VORTAC on SOT R-107 to JALIT. Thence . . . .

VOLUNTEER TRANSITION (VXV.LIINN3): From over VXV VORTAC on VXV R-102 to CLRRY, then on CLT R-301 to JALIT. Thence . . . .

. . . . from JALIT on CLT R-301 to LIINN, then on CLT R-301 to CLT VOR/DME. Expect RADAR vectors to destination airport or final approach course prior to CLT VOR/DME.

SE-2, 22 FEB 2024 to 21 MAR 2024

SE-2, 22 FEB 2024 to 21 MAR 2024