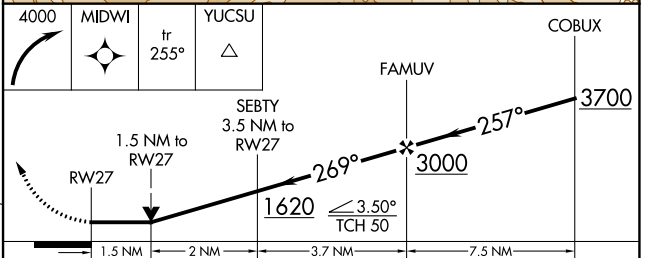
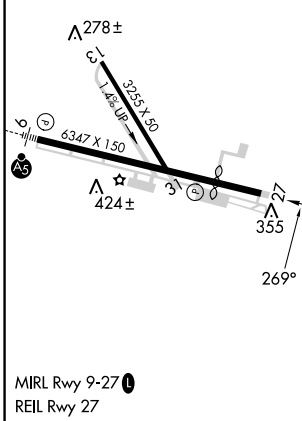
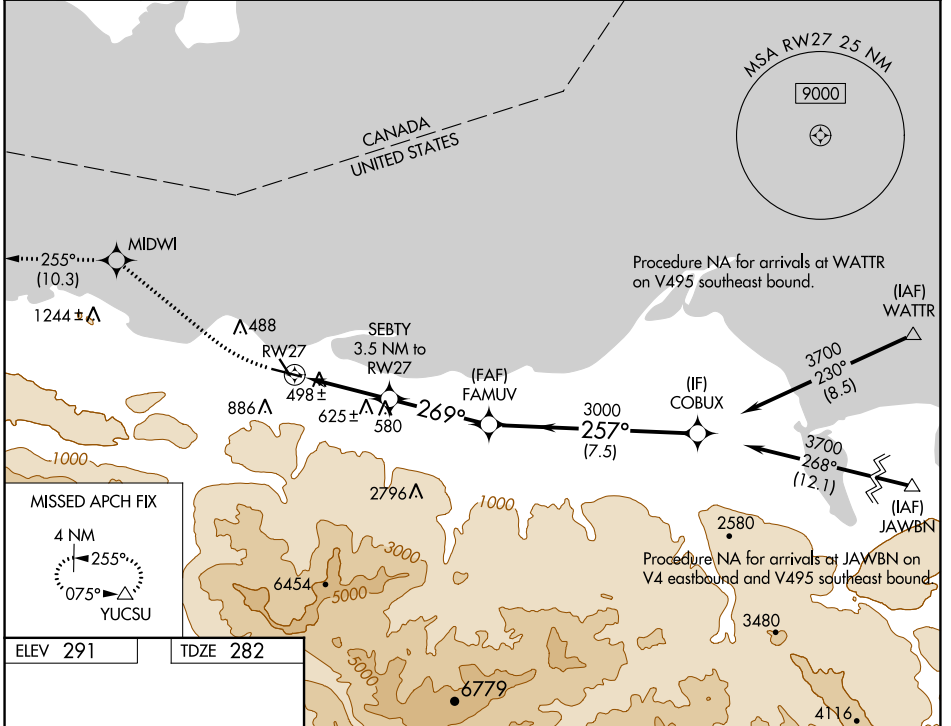


WAAS CH 90338 W27A	APP CRS 269°	Rwy ldg TDZE Apt Elev	4993 282 291
--	------------------------	-----------------------------	---

RNAV (GPS) RWY 27

WILLIAM R FAIRCHILD INTL (CLM)

RNP APCH - GPS.		MISSED APPROACH: Climbing right turn to 4000 direct MIDWI and on track 255° to YUCSU and hold.	
<p>▼ Circling Rwy 13, 31 NA at night. ▲ Rwy 27 helicopter visibility reduction below ¼ SM NA. Circling NA south of Rwy 9-27.</p>		ASOS 135.175	WHIDBEY APP CON 118.2 285.65
		CLNC DEL 124.15	UNICOM 122.975 (CTAF) 1



CATEGORY	A	B	C	D
LP MDA	760-1	478 (500-1)	760-1 ³ / ₈	478 (500-1 ³ / ₈)
LNAV MDA	920-1	638 (700-1)	920-1 ³ / ₄	638 (700-1 ³ / ₄)
☑ CIRCLING	920-1	629 (700-1)	920-1 ³ / ₄ 629 (700-1 ³ / ₄)	1000-2 ¹ / ₄ 709 (800-2 ¹ / ₄)

NW-1, 22 FEB 2024 to 21 MAR 2024

NW-1, 22 FEB 2024 to 21 MAR 2024