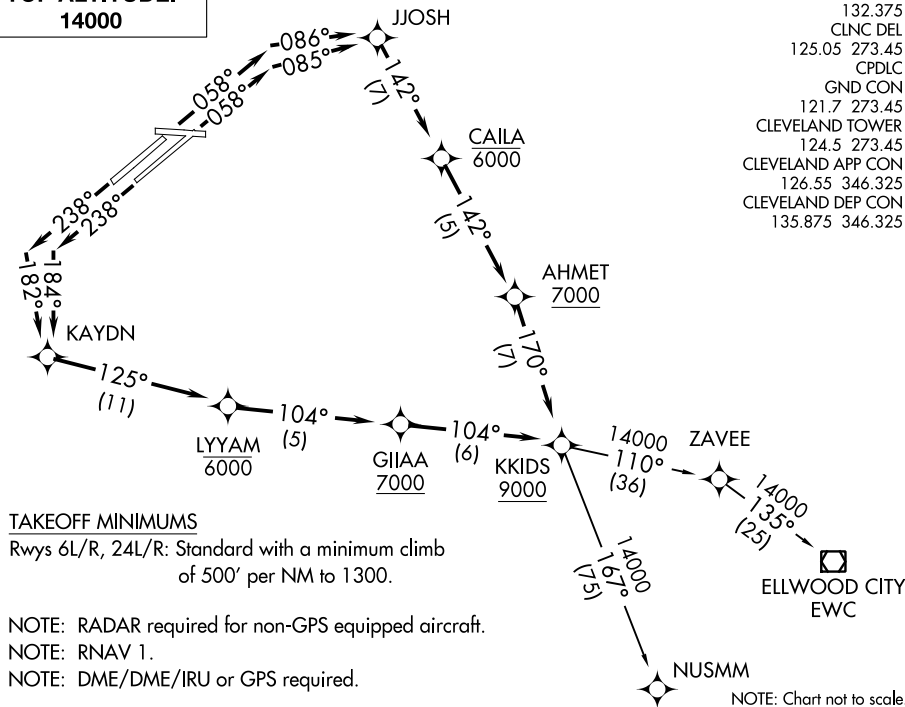


KKIDS ONE DEPARTURE (RNAV)

**TOP ALTITUDE:
14000**

D-ATIS
132.375
CLNC DEL
125.05 273.45
CPDLC
GND CON
121.7 273.45
CLEVELAND TOWER
124.5 273.45
CLEVELAND APP CON
126.55 346.325
CLEVELAND DEP CON
135.875 346.325



DEPARTURE ROUTE DESCRIPTION

TAKEOFF RUNWAY 06L: Climb on heading 058° to intercept course 086° to JJOSH, then on track 142° to cross CAILA at or below 6000, then on track 142° to cross AHMET at or above 7000, then on track 170° to cross KKIDS at or above 9000 thence....

TAKEOFF RUNWAY 06R: Climb on heading 058° to intercept course 085° to JJOSH, then on track 142° to cross CAILA at or below 6000, then on track 142° to cross AHMET at or above 7000, then on track 170° to cross KKIDS at or above 9000 thence....

TAKEOFF RUNWAY 24L: Climb on heading 238° to intercept course 184° to KAYDN, then on track 125° to cross LYYAM at or below 6000, then on track 104° to cross GI1AA at or above 7000, then on track 104° to cross KKIDS at or above 9000, thence....

TAKEOFF RUNWAY 24R: Climb on heading 238° to intercept course 182° to KAYDN, then on track 125° to cross LYYAM at or below 6000, then on track 104° to cross GI1AA at or above 7000, then on track 104° to cross KKIDS at or above 9000, thence....

....on (Transition). Maintain 14000, expect filed altitude ten minutes after departure.

ELLWOOD CITY TRANSITION (KKIDS1.EWC)
NUSMM TRANSITION (KKIDS1.NUSMM)

EC-2, 22 FEB 2024 to 21 MAR 2024

EC-2, 22 FEB 2024 to 21 MAR 2024