

| | | |
|--|------------------------|---|
| WAAS CH 77606 W04A | APP CRS 038° | Rwy Idg TDZE 316 Apt Elev 316 |
|--|------------------------|---|

RNAV (GPS) RWY 4

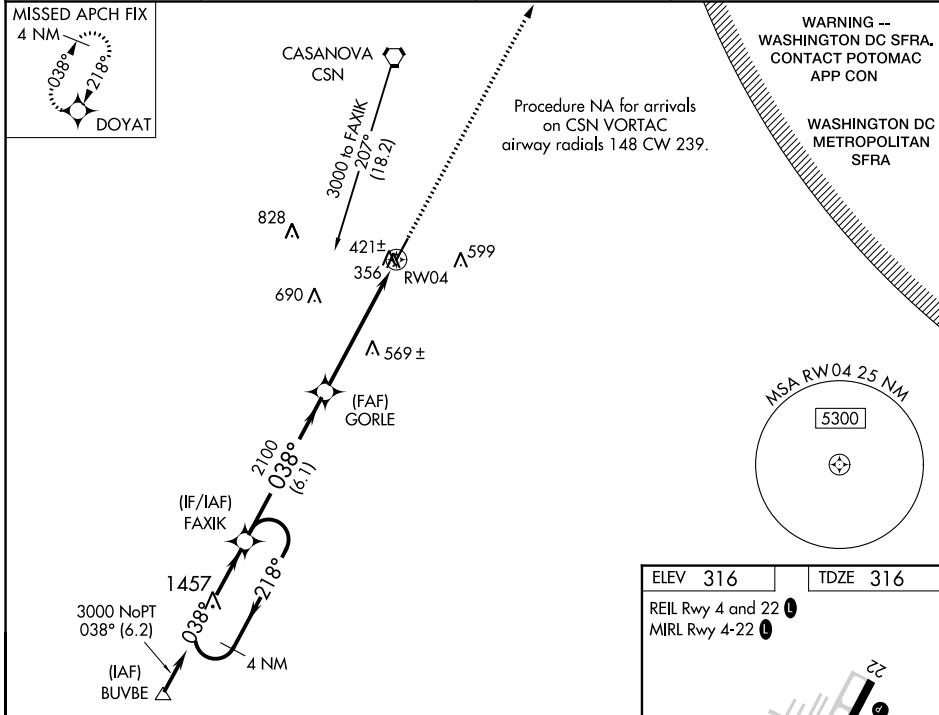
CULPEPER RGNL (CJR)

RNP APCH.

⚠ When VGSi inoperative, procedure NA at night. Baro-VNAV NA when using Washington Dulles Intl altimeter setting. For uncompensated Baro-VNAV systems, LNAV/VNAV NA below -15°C or above 48°C. Rwy 4 helicopter visibility reduction below 1 SM NA. When local altimeter setting not received, use Washington Dulles Intl altimeter setting and increase all DAs 73 feet, all MDAs 80 feet, LPV and LNAV/VNAV all Cats visibility ¼ mile, LNAV Cat D visibility ¼ mile.

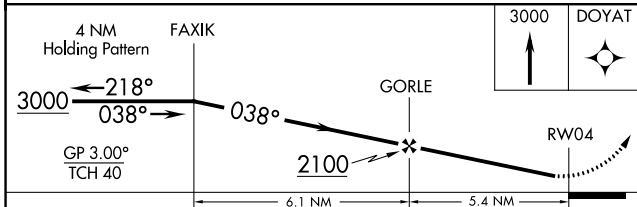
MISSED APPROACH: Climb to 3000 direct DOYAT and hold.

| | | | |
|--------------------------|---|--------------------------|--|
| AWOS-3 119.325 | POTOMAC APP CON 128.525 306.925 | CLNC DEL 121.6 | UNICOM 123.075 (CTAF) 1 |
|--------------------------|---|--------------------------|--|

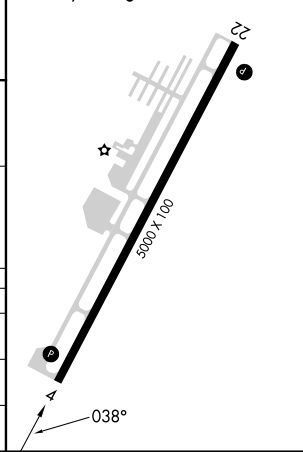


NE-3, 22 FEB 2024 to 21 MAR 2024

NE-3, 22 FEB 2024 to 21 MAR 2024



| | |
|----------------------------|----------|
| ELEV 316 | TDZE 316 |
| REIL Rwy 4 and 22 1 | |
| MIRL Rwy 4-22 1 | |



| CATEGORY | A | B | C | D |
|--------------|---------------------|---|---------------------|---|
| LPV DA | 610-1 294 (300-1) | | | |
| LNAV/VNAV DA | 833-1¾ 517 (600-1¾) | | | |
| LNAV MDA | 820-1 504 (600-1) | | 820-1½ 504 (600-1½) | |