

ROCKIES FIVE DEPARTURE
(ROCKIS, DEN) 26MAR20

COLORADO AIR AND SPACE PORT (CFO)
DENVER, COLORADO

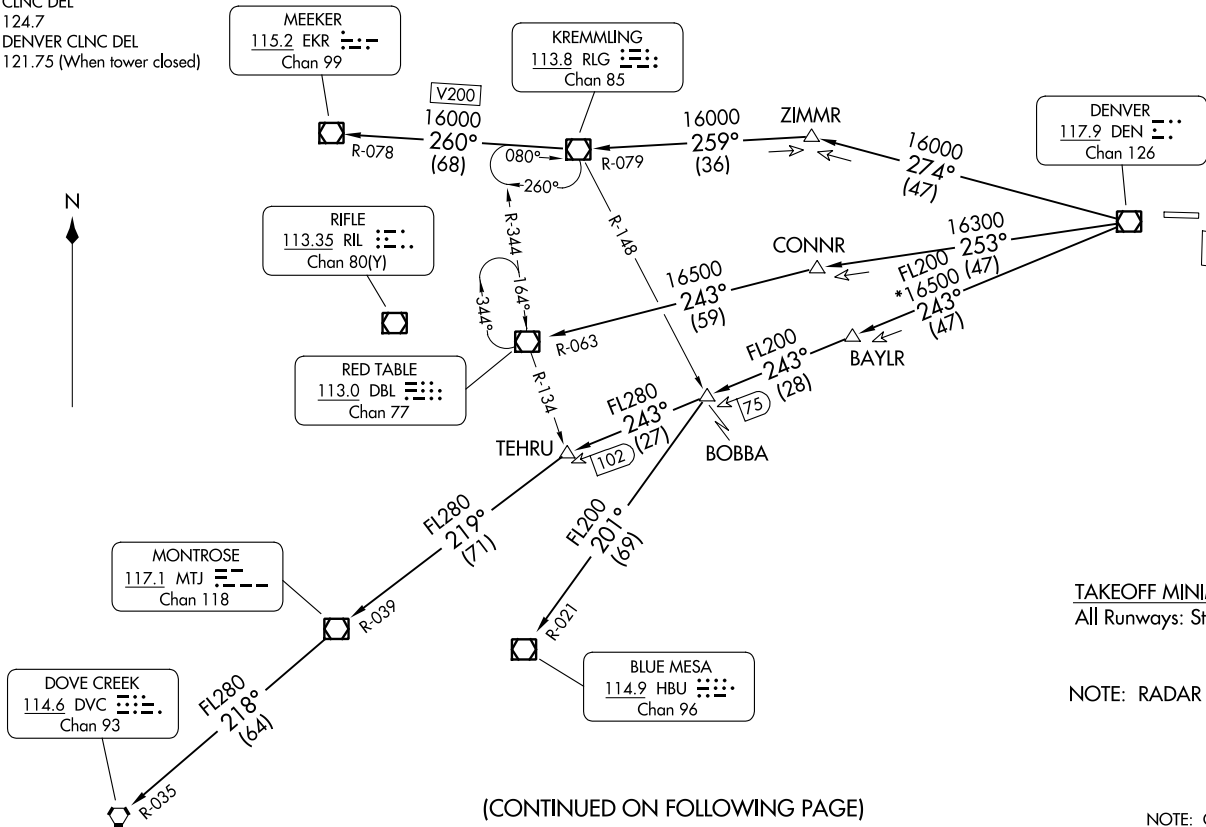
DENVER DEP CON
128.25 371.95
ATIS
119.025
CLNC DEL
124.7
DENVER CLNC DEL
121.75 (When tower closed)

TOP ALTITUDE:
ASSIGNED BY ATC

(ROCKIS, DEN) 23334
ROCKIES FIVE DEPARTURE

AL-6851 (FAA)

COLORADO AIR AND SPACE PORT (CFO)
DENVER, COLORADO



TAKEOFF MINIMUMS
All Runways: Standard.

NOTE: RADAR required.

(CONTINUED ON FOLLOWING PAGE)

NOTE: Chart not to scale.



DEPARTURE ROUTE DESCRIPTION

TAKEOFF ALL RUNWAYS: Fly assigned heading and altitude for RADAR vectors to assigned route. Expect filed altitude 10 minutes after departure.

LOST COMMUNICATIONS: If no transmissions are received within one minute after departure, maintain assigned heading until 7000 feet, then climb to filed altitude direct DEN VOR/DME, then on assigned transition. If filed altitude is above 10000 feet, cross DEN VOR/DME at or above 11000 feet.

BLUE MESA TRANSITION (ROCK15.HBU): From over DEN VOR/DME on DEN R-243 and HBU R-021 to HBU VOR/DME.

DOVE CREEK TRANSITION (ROCK15.DVC): From over DEN VOR/DME on DEN R-243 and MTJ R-039 to MTJ VOR/DME, then on MTJ R-218 and DVC R-035 to DVC VORTAC.

KREMMLING TRANSITION (ROCK15.RLG): From over DEN VOR/DME on DEN R-274 and RLG R-079 to RLG VOR/DME.

MEEKER TRANSITION (ROCK15.EKR): From over DEN VOR/DME on DEN R-274 and RLG R-079 to RLG VOR/DME, then on RLG R-260 and EKR R-078 to EKR VOR/DME.

MONTROSE TRANSITION (ROCK15.MTJ): From over DEN VOR/DME on DEN R-243 and MTJ R-039 to MTJ VOR/DME.

RED TABLE TRANSITION (ROCK15.DBL): From over DEN VOR/DME on DEN R-253 and DBL R-063 to DBL VOR/DME.

SW-1, 22 FEB 2024 to 21 MAR 2024

SW-1, 22 FEB 2024 to 21 MAR 2024