

|  |                        |                             |   |
|--|------------------------|-----------------------------|---|
| WAAS<br>CH <b>56627</b><br><b>W19A</b> | APP CRS<br><b>187°</b> | Rwy Idg<br>TDZE<br>Apt Elev | <b>6502</b><br><b>130</b><br><b>130</b> |
|--|------------------------|-----------------------------|---|

# RNAV (GPS) RWY 19

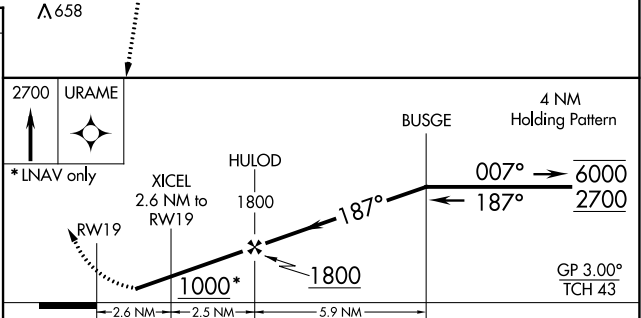
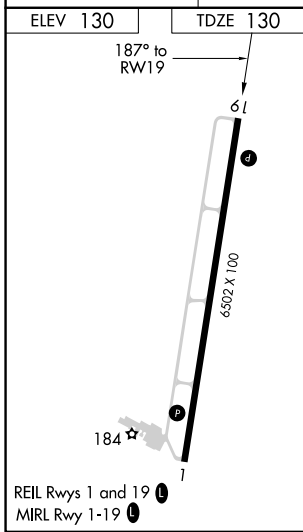
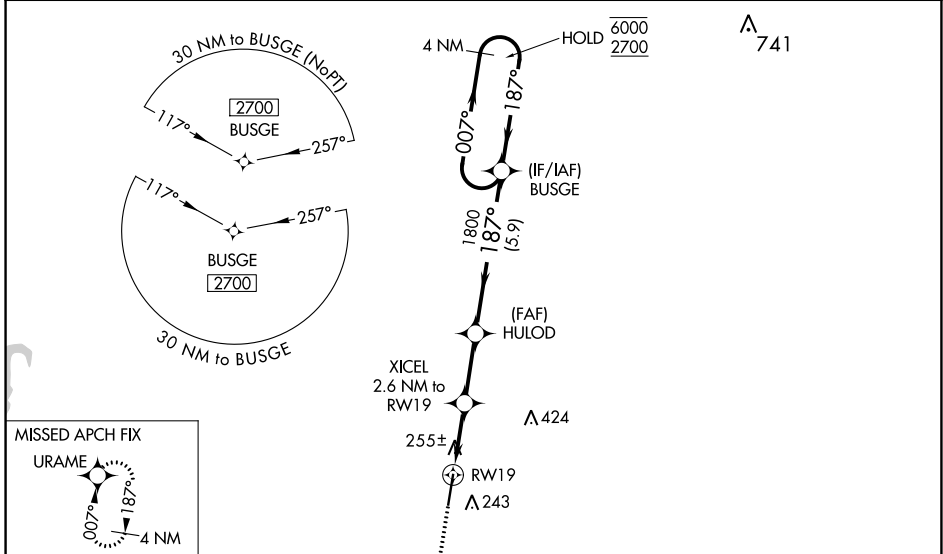
HARRELL FLD (CDH)

RNP APCH-GPS.

**⚠** Rwy 19 helicopter visibility reduction below 3/4 SM NA. Baro-VNAV NA when using El Dorado altimeter setting. For uncompensated Baro-VNAV systems, LNAV/VNAV NA below -15°C or above 54°C. When local altimeter setting not received, use El Dorado altimeter setting and LPV DA to 517 feet, LNAV/VNAV DA to 503 feet and all MDA 80 feet; increase LPV all Cats visibility 1/8 SM, and LNAV Cats C and D, and Circling Cat D 1/4 SM.

**MISSED APPROACH:** Climb to 2700 direct URAME and hold.

|                        |   |                                 |
|------------------------|---|---------------------------------|
| AWOS-3<br><b>125.2</b> | FORT WORTH CENTER<br><b>128.2 269.1</b> | UNICOM<br><b>122.7 (CTAF) 0</b> |
|------------------------|---|---------------------------------|



| CATEGORY     | A                    | B                    | C                            | D                            |
|--------------|----------------------|----------------------|------------------------------|------------------------------|
| LPV DA       |                      | 440-1                | 310 (400-1)                  |                              |
| LNAV/VNAV DA |                      | 426-1                | 296 (300-1)                  |                              |
| LNAV MDA     | 520-1                | 390 (400-1)          | 520-1 1/8                    | 390 (400-1 1/8)              |
| CIRCLING     | 560-1<br>430 (500-1) | 580-1<br>450 (500-1) | 580-1 1/2<br>450 (500-1 1/2) | 960-2 3/4<br>830 (900-2 3/4) |

SC-1, 22 FEB 2024 to 21 MAR 2024

SC-1, 22 FEB 2024 to 21 MAR 2024