

RNAV (GPS) E

APCH CRS 090°	Rwy Idg TDZE Arprt Elev	N/A N/A 218
-------------------------	-------------------------------	--------------------------

AL-91 (USAF)

COLUMBUS AFB (KCBM)

RNP APCH-GPS

MISSED APPROACH: Climbing right turn to 3000 direct JOLLI and hold or as directed by ATC.

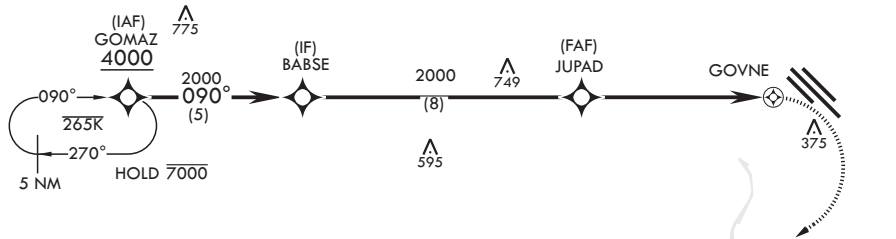
ATIS* 115.2 273.5	APP CON* 126.075 239.25 N 134.55 350.3 SE 135.6 323.275 SW	TOWER* 126.65 379.925	GND CON* 121.9 275.8	CLNC DEL* 269.55
-----------------------------	--	---------------------------------	--------------------------------	----------------------------

522
Circling visibility reduction by helicopters NA.

DME/DME RNP-0.3 NA

775

When circling to Rwy 31R at night, operational VGSI required, remain on or above VGSI glidepath until threshold.



FOR USE BY 14 FTW ACFT ONLY

EMERG SAFE ALT 100 NM 3700

		ELEV 218 			
CATEGORY	A	B	C	D	
C CIRCLING	760-1 542	(600-1)	760-1½ 542 (600-1½)	NA	

RNAV (GPS) E

SC-4, 22 FEB 2024 to 21 MAR 2024

SC-4, 22 FEB 2024 to 21 MAR 2024