

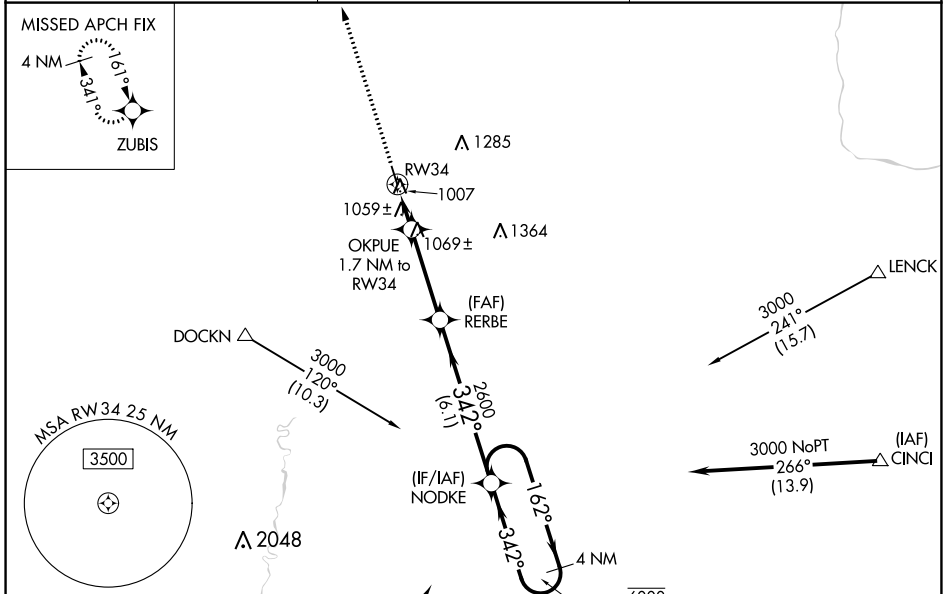
WAAS CH <b>56328</b> <b>W34A</b>	APP CRS <b>342°</b>	Rwy Idg TDZE Apt Elev	<b>4001</b> <b>945</b> <b>945</b>
----------------------------------------	------------------------	-----------------------------	-----------------------------------------

# RNAV (GPS) RWY 34

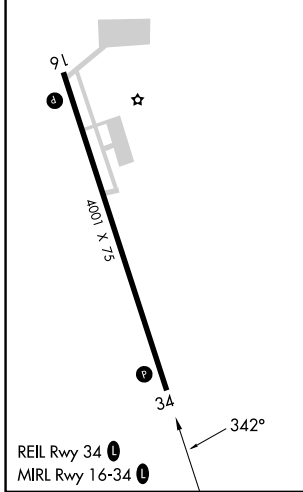
CAMBRIDGE MUNI (CBG)

RNP APCH.	MISSED APPROACH: Climb to 3000 direct ZUBIS and hold.
<p><b>T</b> Rwy 34 helicopter visibility reduction below 1 SM NA. <b>A</b> Procedure NA at night.</p>	

AWOS-3 <b>121.125</b>	MINNEAPOLIS CENTER <b>121.05 235.775</b>	UNICOM <b>122.8 (CTAF) 0</b>
--------------------------	---------------------------------------------	---------------------------------

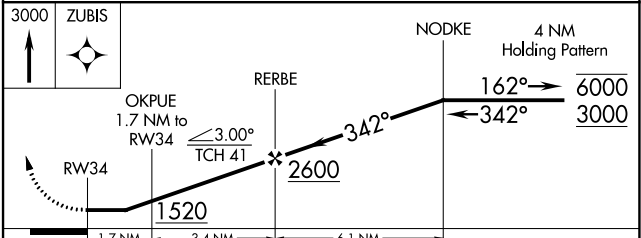


ELEV 945	TDZE 945
----------	----------



Procedure NA for arrival on GEP VORTAC airway radials 297 CW 103.

(IAF) GOPHER GEP



CATEGORY	A	B	C	D
LP MDA	1320-1	375 (400-1)	1320-1 $\frac{1}{8}$ 375 (400-1 $\frac{1}{8}$ )	NA
LNAV MDA	1340-1	395 (400-1)	1340-1 $\frac{1}{8}$ 395 (400-1 $\frac{1}{8}$ )	NA

NC-1, 22 FEB 2024 to 21 MAR 2024

NC-1, 22 FEB 2024 to 21 MAR 2024