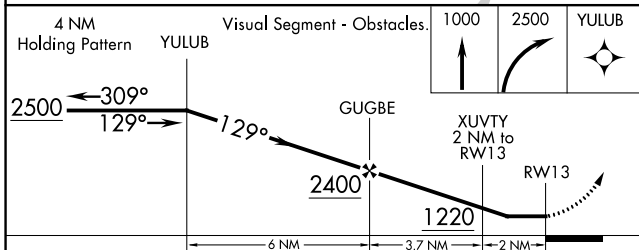
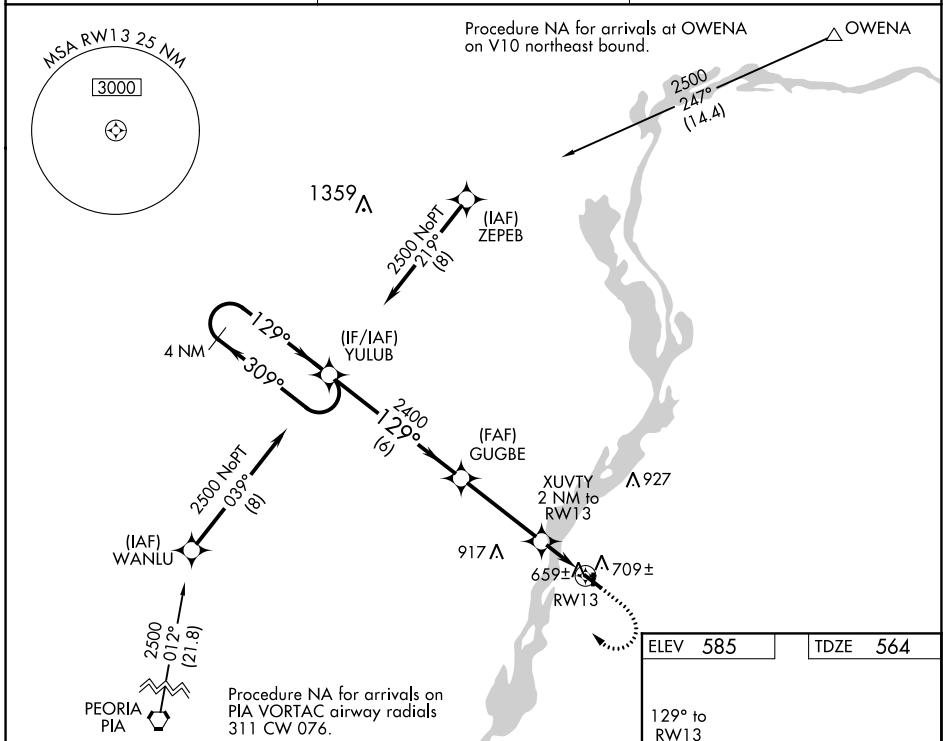


WAAS CH 66035 W13A	APP CRS 129°	Rwy Idg TDZE Apt Elev	4003 564 585
--	------------------------	-----------------------------	---

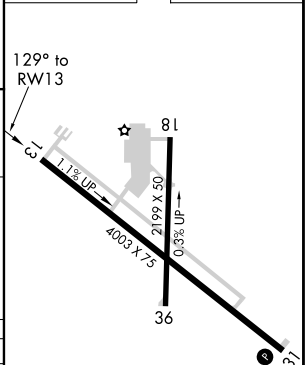
RNAV (GPS) RWY 13

MARSHALL COUNTY (C75)

<p>⚠ DME/DME RNP-0.3 NA. Helicopter visibility reduction below 3/4 SM NA. When local altimeter setting not received, use Peru altimeter setting and increase all MDA 80 feet and increase LP and Circling Cat C visibilities 1/4 mile and LNAV Cat C visibility 1/8 mile. Night landing: Rwy 18, 31, 36 NA.</p>	<p>MISSED APPROACH: Climb to 1000 then climbing right turn to 2500 direct YULUB and hold.</p>	
<p>AWOS-3 119.425</p>	<p>CHICAGO CENTER 124.55 307.125</p>	<p>UNICOM 122.8 (CTAF) 0</p>



ELEV 585	TDZE 564
----------	----------



CATEGORY	A	B	C	D
LP MDA	920-1	356 (400-1)	920-1 1/8 356 (400-1 1/8)	NA
LNAV MDA	960-1	396 (400-1)	960-1 1/4 396 (400-1 1/4)	NA
C CIRCLING	1100-1	515 (600-1)	1200-1 3/4 615 (700-1 3/4)	NA

REIL Rwy 13 0
MIRL Rwy 13-31 0
LIRL Rwy 18-36

EC-3, 27 JAN 2022 to 24 FEB 2022

EC-3, 27 JAN 2022 to 24 FEB 2022

VORTAC BDF	APP CRS	Rwy Idg	4003
114.7	133°	TDZE	564
Chan 94		Apt Elev	585

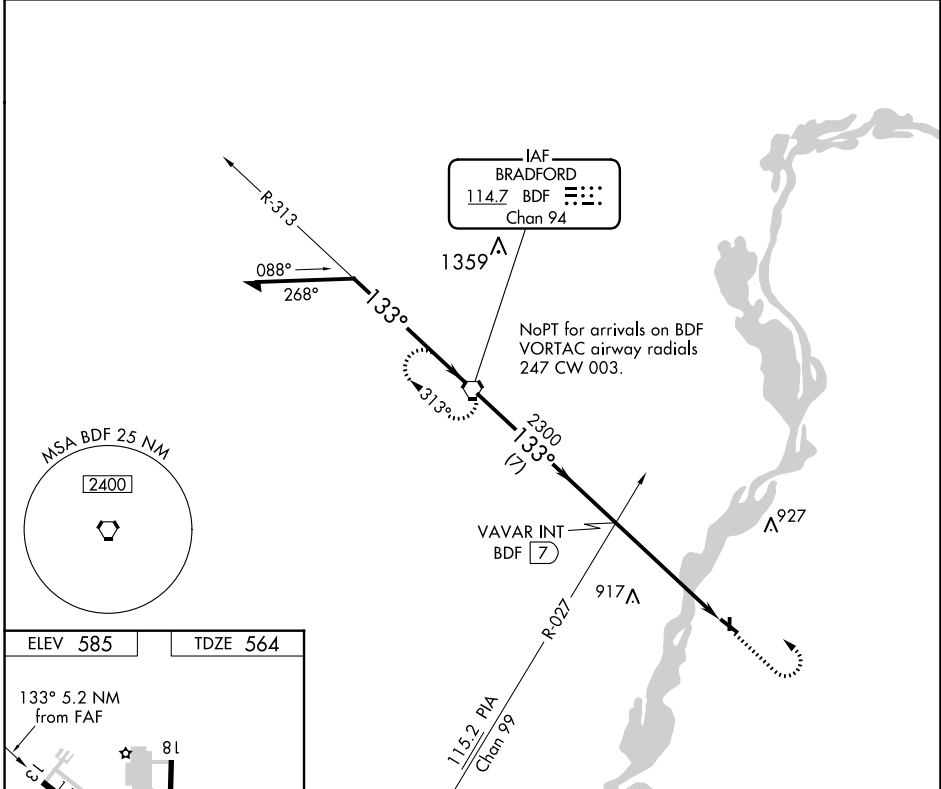
VOR RWY 13

MARSHALL COUNTY (C75)

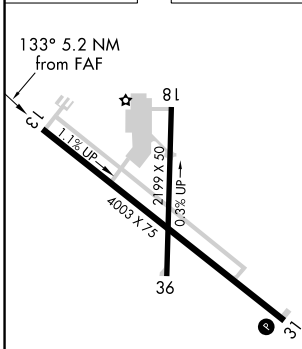
⚠ NA When local altimeter not received, use Peru altimeter setting and increase all MDA 80 feet, increase S-13 Cat C visibility to 1 1/8, and Circling Cat C visibility to 2. Night landing: Rwy 18, 31, 36 NA. Helicopter visibility reduction below 3/4 SM NA.

MISSED APPROACH: Climb to 1500, then climbing left turn to 2500 direct BDF VORTAC and hold.

AWOS-3 119.425	CHICAGO CENTER 124.55 307.125	UNICOM 122.8 (CTAF) 0
--------------------------	---	---------------------------------

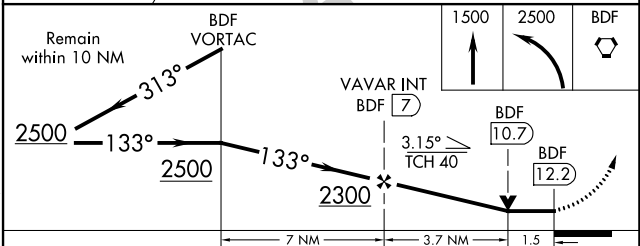


ELEV 585	TDZE 564
-----------------	-----------------



REIL Rwy 13 **0**
MIRL Rwy 13-31 **0**
LIRL Rwy 18-36

FAF to MAP 5.2 NM					
Knots	60	90	120	150	180
Min:Sec	5:12	3:28	2:36	2:05	1:44



CATEGORY	A	B	C	D
S-13	1140-1	576 (600-1)	1140-1 5/8 576 (600-1 1/8)	NA
C CIRCLING	1140-1	572 (600-1)	1200-1 3/4 615 (700-1 1/4)	NA

EC-3, 27 JAN 2022 to 24 FEB 2022

EC-3, 27 JAN 2022 to 24 FEB 2022