

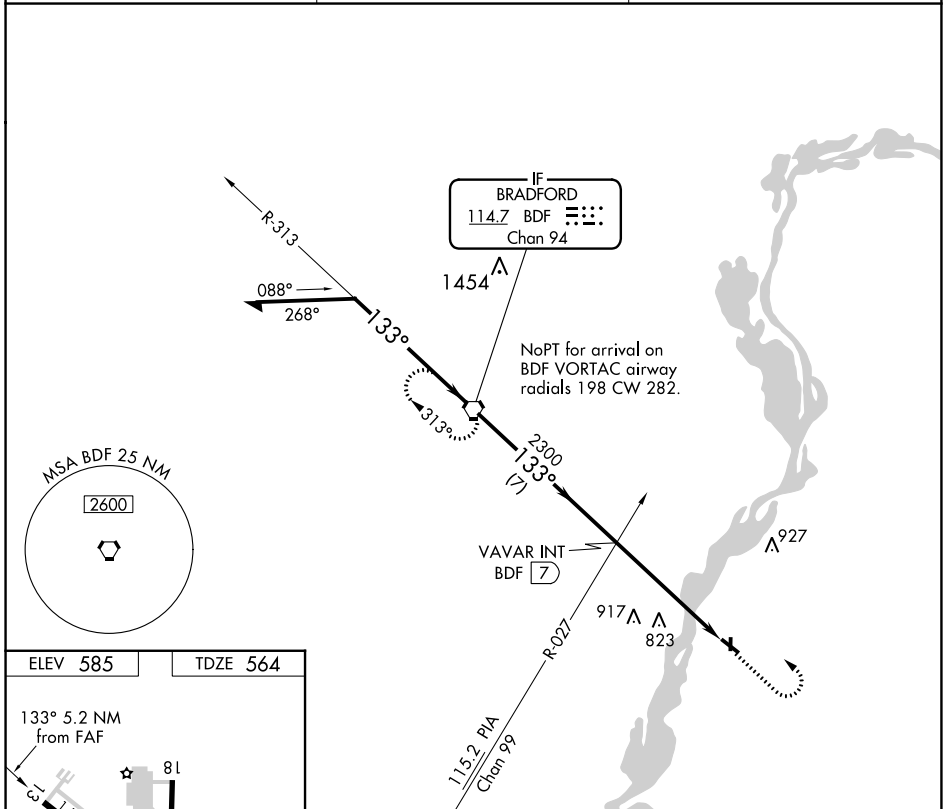
VORTAC BDF 114.7 Chan 94	APP CRS 133°	Rwy Idg TDZE 564 Apt Elev 585	4003
--	------------------------	---	-------------

VOR RWY 13
MARSHALL COUNTY (C75)

⚠ Circling to Rwy 31, 36 NA at night.
⚠ Rwy 13 helicopter visibility reduction below 3/4 SM NA.

MISSED APPROACH: Climb to 1500, then climbing left turn to 2500 direct BDF VORTAC and hold.

AWOS-3 119.425	CHICAGO CENTER 124.55 307.125	UNICOM 122.8 (CTAF) 0
--------------------------	---	---------------------------------



ELEV 585	TDZE 564				
133° 5.2 NM from FAF					
81	36				
1.1% UP	0.6% UP				
2199 X 50	4003 X 75				
REIL Rwy 13	MIRL Rwy 13-31				
LIRL Rwy 18-36					
FAF to MAP 5.2 NM					
Knots	60	90	120	150	180
Min:Sec	5:12	3:28	2:36	2:05	1:44

Remain within 10 NM	BDF VORTAC	1500	2500	BDF
2500	313°	2500	133°	2300
VAVAR INT BDF 7		3.15° TCH 40	BDF 10.5	BDF 12.2
CATEGORY	A	B	C	D
S-13	1140-1	576 (600-1)	1140-1 5/8 576 (600-1 5/8)	NA
CIRCLING	1140-1	555 (600-1)	1200-1 3/4 615 (700-1 3/4)	NA