

APP CRS	Rwy Idg	3500
088°	TDZE	916
	Apt Elev	916

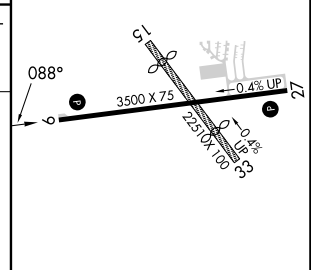
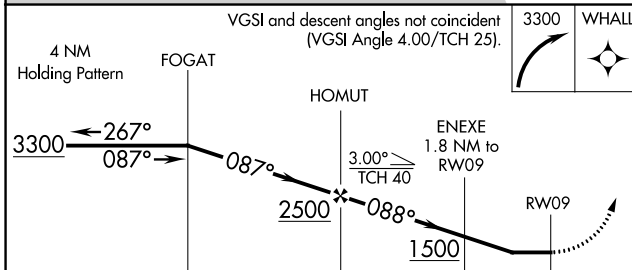
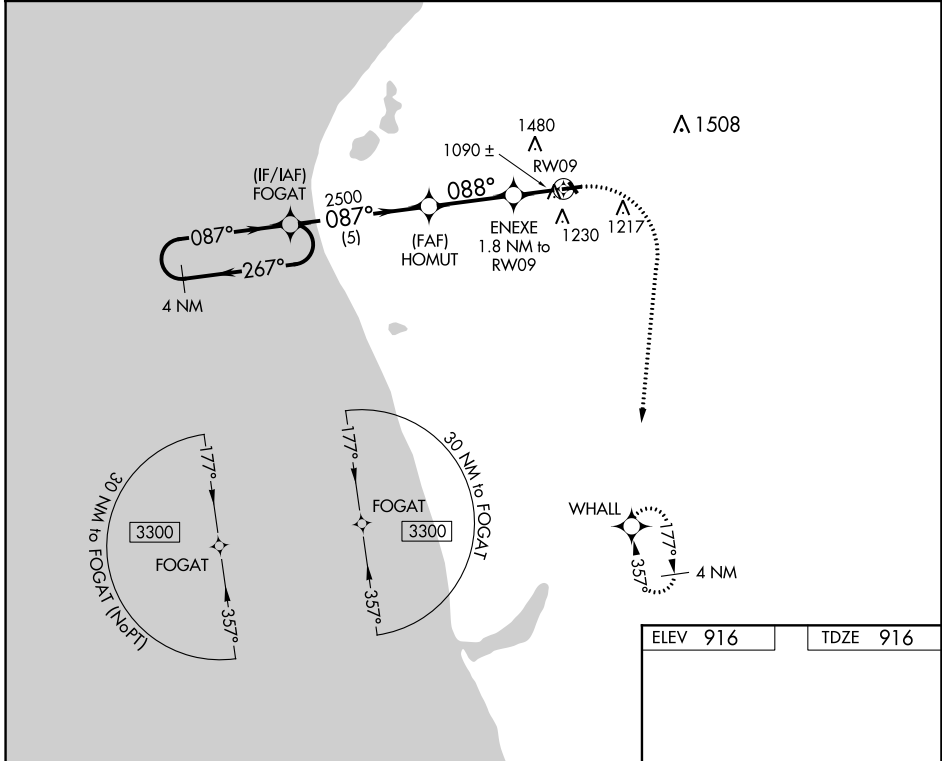
RNAV (GPS) RWY 9

OCEANA COUNTY (C04)

⚠ NA When local altimeter setting not received, use Fremont altimeter setting and increase all MDAs 80 feet. DME/DME RNP-0.3 NA. Procedure NA at night. Helicopter visibility reduction below 1 SM NA. Circling NA to Rwy 15 and 33.

MISSED APPROACH: Climbing right turn to 3300 direct WHALL and hold.

AWOS-AV 122.7	GREAT LAKES APP CON* 119.8 290.35	UNICOM 122.7 (CTAF)
-------------------------	---	-------------------------------



	5 NM		3.1 NM		1.8 NM	
CATEGORY	A	B	C	D		
LNAV MDA	1340-1	424 (500-1)	NA			
CIRCLING	1540-1 624 (700-1)	1780-1¼ 864 (900-1¼)	NA			

MIRL Rwy 09-27 **0**

EC-1, 22 FEB 2024 to 21 MAR 2024

EC-1, 22 FEB 2024 to 21 MAR 2024